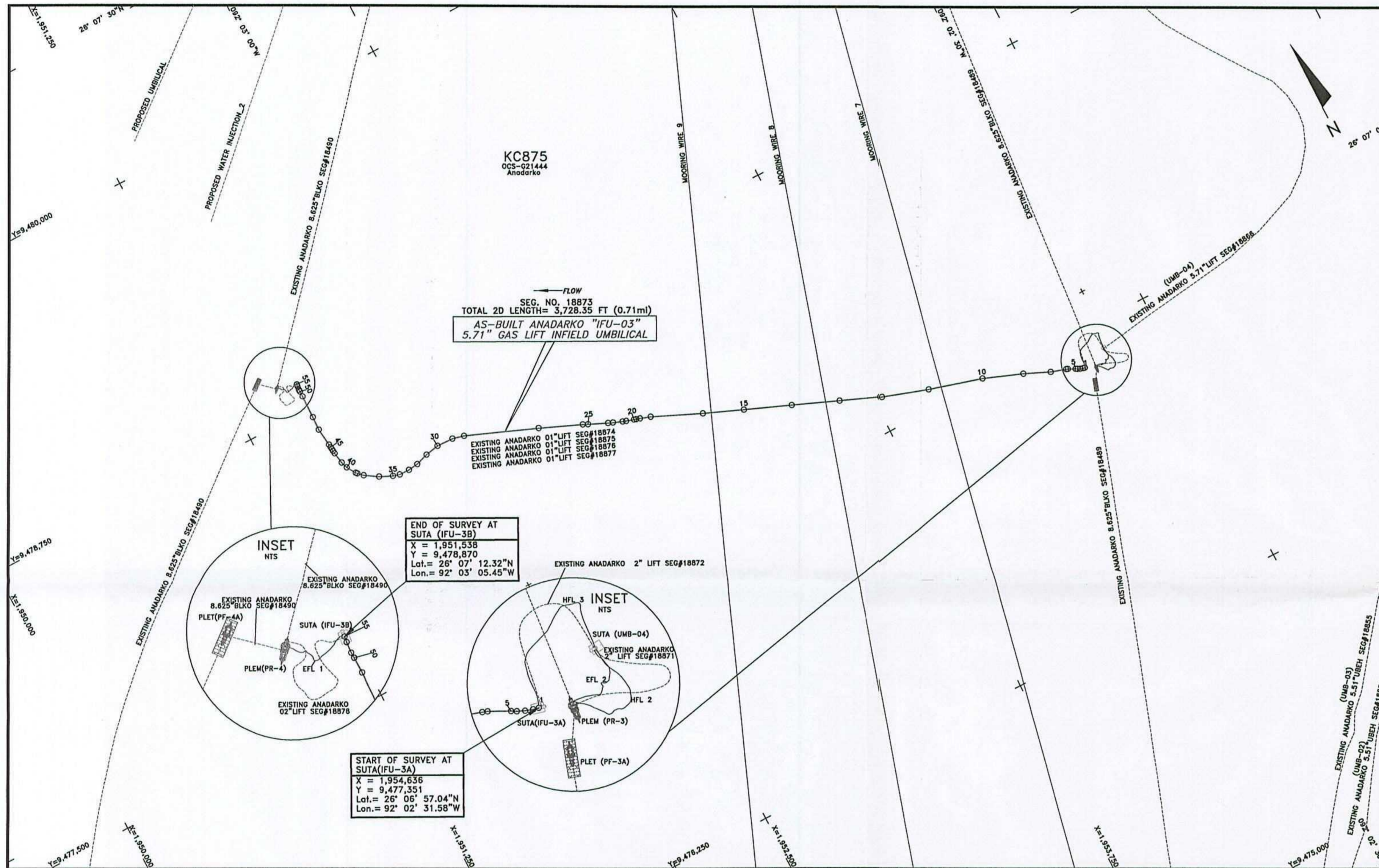


PLAN VIEW

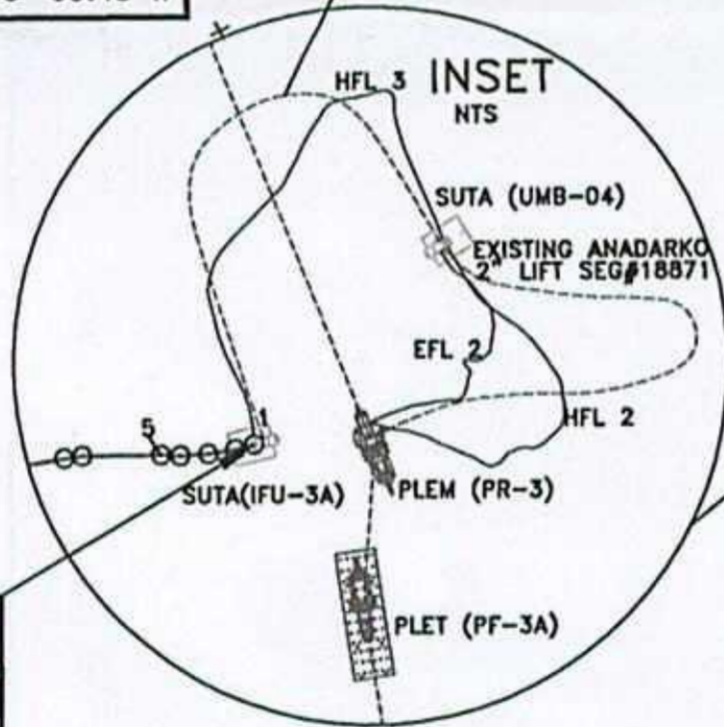
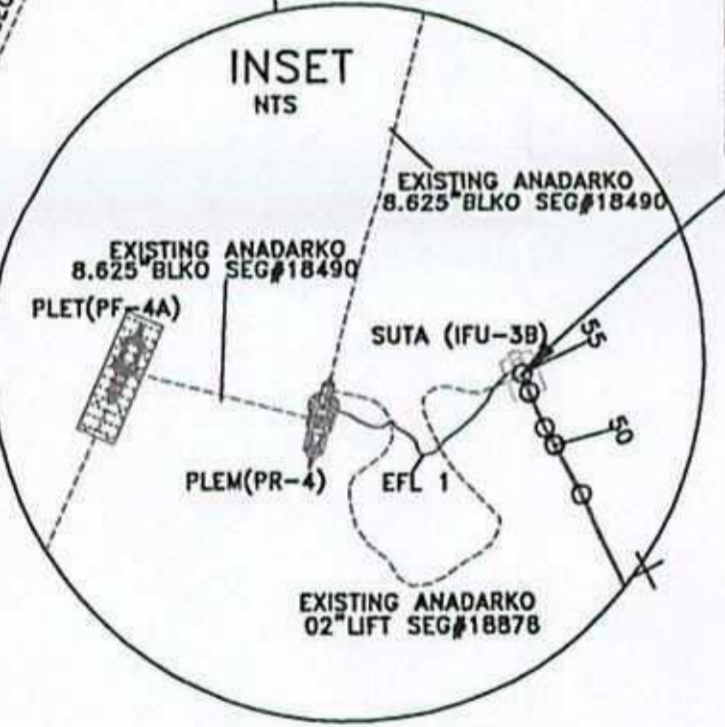


SEG. NO. 18873
 TOTAL 2D LENGTH= 3,728.35 FT (0.71mi)
 AS-BUILT ANADARKO "IFU-03"
 5.71" GAS LIFT INFIELD UMBILICAL

EXISTING ANADARKO 01" LIFT SEG#18874
 EXISTING ANADARKO 01" LIFT SEG#18875
 EXISTING ANADARKO 01" LIFT SEG#18876
 EXISTING ANADARKO 01" LIFT SEG#18877

END OF SURVEY AT
 SUTA (IFU-3B)
 X = 1,951,538
 Y = 9,478,870
 Lat. = 26° 07' 12.32"N
 Lon. = 92° 03' 05.45"W

START OF SURVEY AT
 SUTA (IFU-3A)
 X = 1,954,636
 Y = 9,477,351
 Lat. = 26° 06' 57.04"N
 Lon. = 92° 02' 31.58"W



AS-BUILT ANADARKO 5.71" GAS LIFT INFIELD UMBILICAL (IFU-03) SEGMENT#18873

POINT	X-COORDINATE	Y-COORDINATE	DESCRIPTION	POINT	X-COORDINATE	Y-COORDINATE	DESCRIPTION	POINT	X-COORDINATE	Y-COORDINATE	DESCRIPTION
1	1,954,636	9,477,351	SUTA (IFU-3A)	26	1,952,576	9,478,142	END OF SPAN	51	1,951,536	9,478,837	START OF BEND RESTRICTOR
2	1,954,628	9,477,353	FLANGE/START OF SPAN	27	1,952,397	9,478,216	ROV FIX	52	1,951,536	9,478,845	START OF FREESPAN
3	1,954,616	9,477,356	START OF BEND RESTRICTOR	28	1,952,089	9,478,356	ROV FIX	53	1,951,537	9,478,861	END OF BEND RESTRICTOR
4	1,954,605	9,477,361	END OF SPAN	29	1,952,039	9,478,348	SANDBAGS	54	1,951,537	9,478,862	FLANGE
5	1,954,598	9,477,365	END OF BEND RESTRICTOR	30	1,951,968	9,478,350	ROV FIX	55	1,951,538	9,478,870	SUTA (IFU-3B)
6	1,954,568	9,477,380	START OF BURIAL	31	1,951,907	9,478,339	ROV FIX	2D LENGTH OF SURVEY POINTS 1 THROUGH 55: 3,728.35' = 0.71 MILES			
7	1,954,560	9,477,383	END OF BURIAL	32	1,951,851	9,478,323	ROV FIX				
8	1,954,495	9,477,403	ROV FIX	33	1,951,807	9,478,318	SANDBAGS				
9	1,954,385	9,477,452	ROV FIX	34	1,951,782	9,478,319	ROV FIX				
10	1,954,217	9,477,516	ROV FIX	35	1,951,733	9,478,327	ROV FIX				
11	1,953,986	9,477,582	ROV FIX	36	1,951,679	9,478,351	ROV FIX				
12	1,953,786	9,477,648	ROV FIX	37	1,951,621	9,478,387	SANDBAGS				
13	1,953,619	9,477,716	ROV FIX	38	1,951,600	9,478,407	START OF BURIAL				
14	1,953,425	9,477,795	ROV FIX	39	1,951,595	9,478,413	END OF BURIAL				
15	1,953,230	9,477,874	ROV FIX	40	1,951,570	9,478,452	ROV FIX				
16	1,953,063	9,477,943	ROV FIX	41	1,951,559	9,478,480	ROV FIX				
17	1,952,854	9,478,035	START OF SPAN	42	1,951,550	9,478,529	START OF BURIAL				
18	1,952,809	9,478,050	END OF SPAN	43	1,951,549	9,478,541	END OF BURIAL				
19	1,952,794	9,478,055	START OF SPAN	44	1,951,548	9,478,550	START OF BURIAL				
20	1,952,784	9,478,058	END OF SPAN	45	1,951,547	9,478,560	END OF BURIAL				
21	1,952,750	9,478,068	START OF SPAN	46	1,951,545	9,478,574	STABILISATION - SANDBAGS				
22	1,952,735	9,478,073	END OF SPAN	47	1,951,534	9,478,651	ROV FIX				
23	1,952,698	9,478,088	START OF SPAN	48	1,951,535	9,478,712	ROV FIX				
24	1,952,676	9,478,096	END OF SPAN	49	1,951,537	9,478,812	START OF BURIAL				
25	1,952,596	9,478,132	START OF SPAN	50	1,951,536	9,478,836	END OF BURIAL				

NOTES

- 1) UMBILICAL COORDINATES ARE THE POSITIONS OF THE R.O.V. (REMOTELY OPERATED VEHICLE) LOCATED AT THE POINTS USING VERIPOS LD2 ULTRA DGPS RECEIVING SPOTBEAM CORRECTIONS, VERIPOS STANDARD DGPS RECEIVING INMARSAT CORRECTIONS POSITIONING AND SONARDYNE FUSION LBL (LONG BASELINE) ACOUSTIC POSITIONING.
- 2) SURVEYED COORDINATES TRANSFORMED FROM NAD83 (GPS DATUM) NADCON VERSION 2.1.
- 3) THIS DRAWING IS NOT FOR NAVIGATION. PIPELINES AND FEATURES IN THE IMMEDIATE VICINITY ARE OBTAINED FROM BOEM (BUREAU OF OCEAN ENERGY MANAGEMENT) & BSEE (BUREAU OF SAFETY AND ENVIRONMENTAL ENFORCEMENT) DATABASE AND CLIENT PROVIDED DATA.
- 4) AS-BUILT SURVEY DATE: APRIL 27, 2013

LEGEND

- AS-BUILT 5.71" GAS LIFT INFIELD UMBILICAL (IFU-03) SEG#18873
- EXISTING PIPELINES/UMBILICALS/FLYING LEADS/JUMPERS
- PROPOSED PIPELINES/UMBILICALS/FLYING LEADS/JUMPERS
- UTEC AS-LAID FLYING LEADS
- MOORING WIRES
- LEASE BLOCK BOUNDARIES
- PROPOSED STRUCTURES
- EXISTING STRUCTURES
- UTEC AS-FOUND/AS-BUILT STRUCTURES
- GEOGRAPHICAL TICKS
- UTM TICKS
- WELLS

GEODESY

Survey Datum: NAD 27
 Ellipsoid: Clarke 1866
 Projection: Universal Transverse Mercator ZONE 15N
 Longitude of Central Meridian: 93°W
 False Easting (m): 500 000
 False Northing (m): 0
 Scale Factor at Central Meridian: 0.99960
 Units: US Survey Feet

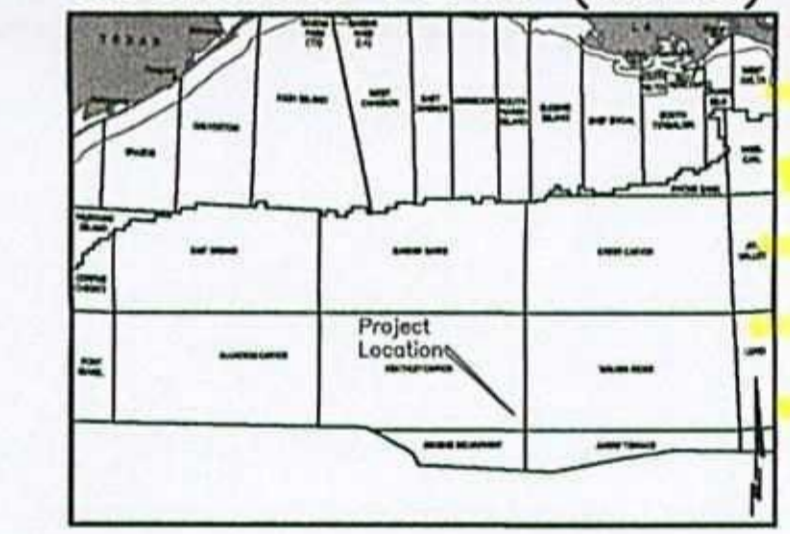
CERTIFIED CORRECT AS TO THE HORIZONTAL POSITION OF THE AS-BUILT UMBILICAL BASED ON THE SURVEY METHODS NOTED.



NATHAN EBY, R.P.L.S.
 TEXAS REG #6198

This document may only be used for the purpose for which it was commissioned and in accordance with the terms of engagement for that commission. Unauthorised use of this document in any form whatsoever is undertaken entirely at the user's risk.

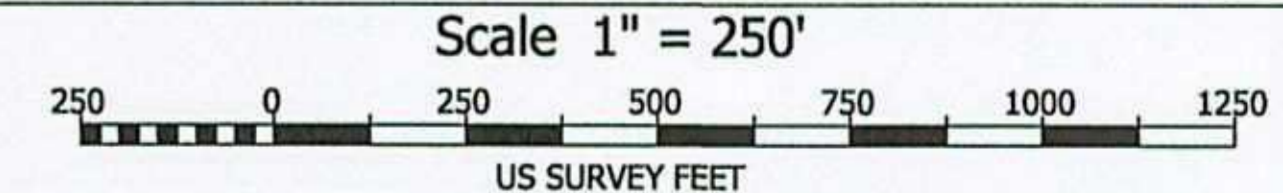
LOCATION PLAN (N.T.S)



Technip
 TECHNIP USA, Inc.

7240 BRITTMOORE RD. SUITE 110
 HOUSTON, TEXAS 77041
 Tel 713-984-8688
 Fax 713-984-8683
 Website www.utecsurvey.com

LUCIUS DEVELOPMENT PROJECT
 AS-BUILT ANADARKO 5.71" GAS LIFT INFIELD UMBILICAL (IFU-03)
 SEGMENT#18873
 KEATHLEY CANYON BLOCK 875
 GULF OF MEXICO



Rev. No.	Date	Comment	Interpr.	Checked	Appr.
0	09/08/14	ISSUED AS FINAL	VR	EG	JL
A2	08/14/14	ISSUED FOR CLIENT COMMENTS	VR	EG	JL
A1	07/24/14	ISSUED FOR CLIENT COMMENTS	VR	EG	JL

Survey Dates: April 27, 2013 Survey Vessel: IRON HORSE
 UTEC Ref. No. 601W-12-025 UTEC Drawing No. 601W-12-025-001 Sheet 001 Of 001
 Plot Size ANSI D