



eni us operating

eni us operating co. inc.  
1200 Smith, Suite 1700  
Houston, TX 77002  
Tel. 713-393-6100 Fax 713-393-6205

ps

February 23, 2017

Ms. Angie Gobert  
Field Operations, Pipeline Section  
Bureau of Safety and Environmental Enforcement  
1201 Elmwood Park Boulevard  
New Orleans, LA 70123-2394

Bureau of Safety and Environmental Enforcement (BSEE)  
**RECEIVED**

**MAR 02 2017**

Office of Field Operations  
Pipeline Section

SUBJECT: **FLUSH AND FILL EXTENSION REQUEST**  
**ROW PIPELINE SEGMENT 18228**

Ms. Gobert:

Eni US Operating Co. Inc (Eni) respectfully requests an extension from the requirements of 30 CFR 250.1006(b)(2) for the ROW pipeline segment referenced below:

Segment No.	ROW	Origin	Destination	Size/Service	Out of Service Date
18228	G29065	WC 130 B G12761	WC 153 SSTI G32110	6" GAS	May 5, 2015

Eni US Operating Co. Inc (Eni) is requesting an extension for the requirement to flush and fill segment 18228 until July 31, 2017. Eni recently received an INC for failure to flush and fill within one year of out of service from the Lake Charles District.

Eni submitted abandonment procedures to your office on February 1, 2017. The extension to flush and prepare this pipeline for abandonment will allow for Eni to consolidate resources to complete the work concurrent with the abandonment schedule.

Eni appreciates your consideration in this matter and look forward to your response. If you have any questions or need additional information please contact Trisha Hackett at (337) 354-8015.

Sincerely,

Brenda Montalvo  
SEQ Regulatory Manager

CC: Fieldwood Energy

Departure is hereby approved pursuant to 30 CFR 250.142.

Date: 3/6/2017

(cc) Bryan A. Domangue  
Acting Regional Supervisor  
Bureau of Safety and Environmental Enforcement

BTH 5/18/2017

In Reply Refer To: GE 1035A

May 18, 2017

Mr. Franco Picciani  
Eni US Operating Co. Inc.  
1200 Smith Street, Suite 1700  
Houston, Texas 77002

Dear Mr. Picciani:

Reference is made to your request dated February 1, 2017, with supplemental data submitted on May 8, 2017, to relinquish Pipeline Right-of-way (ROW) OCS-G29065 and to decommission in place the associated pipeline segment number (PSN) 18228

For ease of reference, PSN 18228 is described as follows:

Segment Number	Size (Inches)	Length (feet)	Service	From	To
18228	6	31,317	Gas	Platform B	16-inch SSTI
				West Cameron Area	West Cameron Area
				Block 130	Block 153

Pipeline Segment Number 18228 has been out of service since May 5, 2015. Since Eni US Operating Co. Inc. did not apply for and receive approval to maintain the Pipeline ROW grant OCS- G29065 in effect beyond the 90 days provided for by a temporary cessation of operations, please be advised that the Pipeline ROW grant OCS- G29065 expired on August 3, 2015. Accordingly, your request to relinquish the subject Pipeline ROW grant cannot be considered.

The approval is subject to the following:

Our review indicates that your proposed activities are in the vicinity of the unidentified magnetic anomalies listed in the Enclosure 1, features that may represent significant archaeological resources. In accordance with 30 CFR 250.1007(a)(5), you must either (1) conduct an underwater archaeological investigation (diver and/or ROV investigations) prior to commencing activities to determine whether these features represent archaeological resources, or (2) ensure that all seafloor disturbing actions resulting from the proposed activities avoid the unidentified features by a distance greater than that listed in the Enclosure 1. If you conduct an underwater archaeological investigation prior to commencing operations, contact either Dr. Jack Irion at (504) 736-1742 or Dr. Christopher Horrell at (504) 736-2796 at least two weeks prior to performing operations to obtain the investigation methodology. If you choose to avoid the features, submit anchor position plats, at a scale of 1-in. = 1,000-ft. with DGPS accuracy, with

your decommissioning report required by 30 CFR 250.1753(b). These plats must depict the "as-placed" location of all anchors, anchor chains, wire ropes and cables on the seafloor (including sweep) and demonstrate that the features were not physically impacted by the decommissioning activities. If you choose to avoid the features and no anchoring activities were conducted during pipeline decommissioning, provide a statement to that effect in lieu of the required anchor position plats.

In accordance with 30 CFR 250.1751, your request to decommission this pipeline is hereby approved, and in accordance with 30 CFR 250.1010(h), the requirement that the pipeline be removed is hereby waived.

Pursuant to 30 CFR 250.141, your request to use an alternate procedure, flushing the pipeline until free of hydrocarbons, from 30 CFR 250.1751(b), the requirement to pig the pipeline, is hereby approved.

The aforementioned decommissioning operations must be completed within 180 days of the date of this letter and a decommissioning completion report must be submitted to this office within 30 days of completing the decommissioning.

Sincerely,

**(org. sgd.) P. Smith**

(for) Bryan A. Domangue  
Acting Regional Supervisor  
Regional Field Operations

Enclosure No. 1  
Magnetic Anomalies

Area/Block	Shot Line Number	Point Number	Intensity (Gammas)	Duration (Feet)	Coordinates	Minimum Avoidance Distance (Feet)	
WC	129	33	13	25	713	X= 1289410 Y= 294945 LAT= 29.458701002 LON=-93.566236523	500
WC	129	32	13	58	236	X= 1289390 Y= 291945 LAT= 29.450451452 LON= -93.56611569	200
WC	129	25	25	14	197	X= 1299970 Y= 297915 LAT= 29.467428688 LON=-93.533240957	150
WC	129	29	26	5	98	X= 1301940 Y= 298470 LAT= 29.469058521 LON=-93.527084955	100
WC	129	31	26	27	487	X= 1302920 Y= 298410 LAT= 29.468945106 LON=-93.524002314	300
WC	129	34	40	17	408	X= 1302990 Y= 297850 LAT= 29.467409059 LON=-93.523748747	300
WC	129	35	26	6	394	X= 1296170 Y= 300810 LAT= 29.475187344 LON=-93.545355445	250
WC	129	17	31	7	148	X= 1296020 Y= 300915 LAT= 29.475468078 LON=-93.545833124	150
WC	129	21	36	20	192	X= 1298000 Y= 303245 LAT= 29.481979406 LON=-93.539752817	150

Side-Scan Sonar Targets

Area/Block	Magnetometer Association	Dimensions LxWxH(Feet)	Coordinates	Minimum Avoidance Distance (Feet)
WC	129	NO	X= 1288695 Y= 293500 LAT= 29.454689655 LON=-93.568394159	250

Side-Scan Sonar Targets

Area/Block	Magnetometer Association	Dimensions LxWxH (Feet)	Coordinates	Minimum Avoidance Distance (Feet)
WC 129	NO		X= 1288695 Y= 293500 LAT= 29.454689655 LON=-93.568394159	250

bc: 1502-01 Segment No. 18228 ROW OCS- G29065 with application (GE 1035A)  
1502-01 Segment No. 18228 ROW OCS- G29065 (Scanning) (GE 274E)  
PSmith: Segment No. 18228



eni us operating

eni us operating co. inc.  
1200 Smith Street, Suite 1700  
Houston, TX 77002  
Tel. 713-393-6100 Fax 713-393-6205

February 1, 2017

Regional Supervisor  
Bureau of Safety and Environmental Enforcement (BSEE)  
Pipelines Section  
1201 Elmwood Park Blvd.  
New Orleans, Louisiana 70123-2394

Bureau of Safety and Environmental Enforcement (BSEE)

**RECEIVED**

**FEB 03 2017**

Office of Field Operations  
Pipeline Section

Attention: Ms. Angie Gobert

Re: Relinquishment and Proposed Abandonment In-Place of Right-of-Way Pipeline – 6" GAS (Segment No. 18228, ROW G29065), Originating at West Cameron Block 130, Platform B and Terminating at West Cameron Block 153, 16-inch SSTI, OCS Federal Waters, Offshore, Louisiana

Ms. Gobert:

Eni US Operating Co. Inc. (Eni) herein applies, in triplicate, for the relinquishment and abandonment of the pipeline listed below, pursuant to the authority granted in The Outer Continental Shelf Lands Act as amended (43 U.S.C. 1331 et seq.) and in compliance with the regulations contained in Title 30 CFR Subpart J, Pipelines and Pipeline Right-of-Way. Pipeline information is as follows:

Segment Number	ROW	Origin	Terminus	OD	Length	Product	Operator
18228	G29065	WC130 B	WC153 SSTI	6"	31317'	GAS	ENI US Operating Co. Inc.

Regarding the pipeline abandonment in place:

- Eni requests a departure from 30 CFR 250.1010(h), which requires removal of a ROW pipeline. Eni requests to abandon this pipeline in-place.
- Eni requests a waiver from pigging the line. In lieu of pigging, the pipeline will be flushed with seawater until free of hydrocarbons.

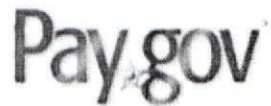
In support of this application, please find the following attached:

- Proposed Pipeline Abandonment Procedure & Subsea Tie-in Schematic
- PayGov receipt in the amount of \$2,170.00 to cover the processing fee for the Application to Decommission the Right-of-Way Pipeline.

Please direct any questions concerning this application to Erin Rachal at (713) 969-1311. Please direct any technical questions to Esau Velazquez, Sr. Project Manager at (713) 969-1363.

Sincerely,

Franco Picciani  
VP Technical Services



## Receipt

### Your payment is complete

Pay.gov Tracking ID: 260F00P7

Agency Tracking ID: 75177705365

Form Name: Application to Decommission a pipeline - ROW

Application Name: BSEE Application to Decommission a ROW Pipeline - BU

### Payment Information

Payment Type: Debit or credit card

Payment Amount: \$2,170.00

Transaction Date: 02/02/2017 02:02:44 PM EST

Payment Date: 02/02/2017

Region: Gulf of Mexico

Contact : Erin Rachal 713-969-1311

Company Name/No: ENI US Operating Co. Inc., 02782

Pipeline Segment No: 18228

Originating Area/Block: West Cameron WC, 130

Terminating Area/Block: West Cameron WC, 153

### Account Information

Cardholder Name: Fieldwood Energy LLC

Card Type: Master Card

Card Number: \*\*\*\*\*7372

### Email Confirmation Receipt

No confirmation email was provided during the creation of this transaction.

Eni US Operating Co. Inc.  
Pipeline Segment No. 18228  
Originating at West Cameron 130 B and  
Terminating at West Cameron 153 16SSTI (Targa)  
Proposed Pipeline Abandonment Procedure

General Information

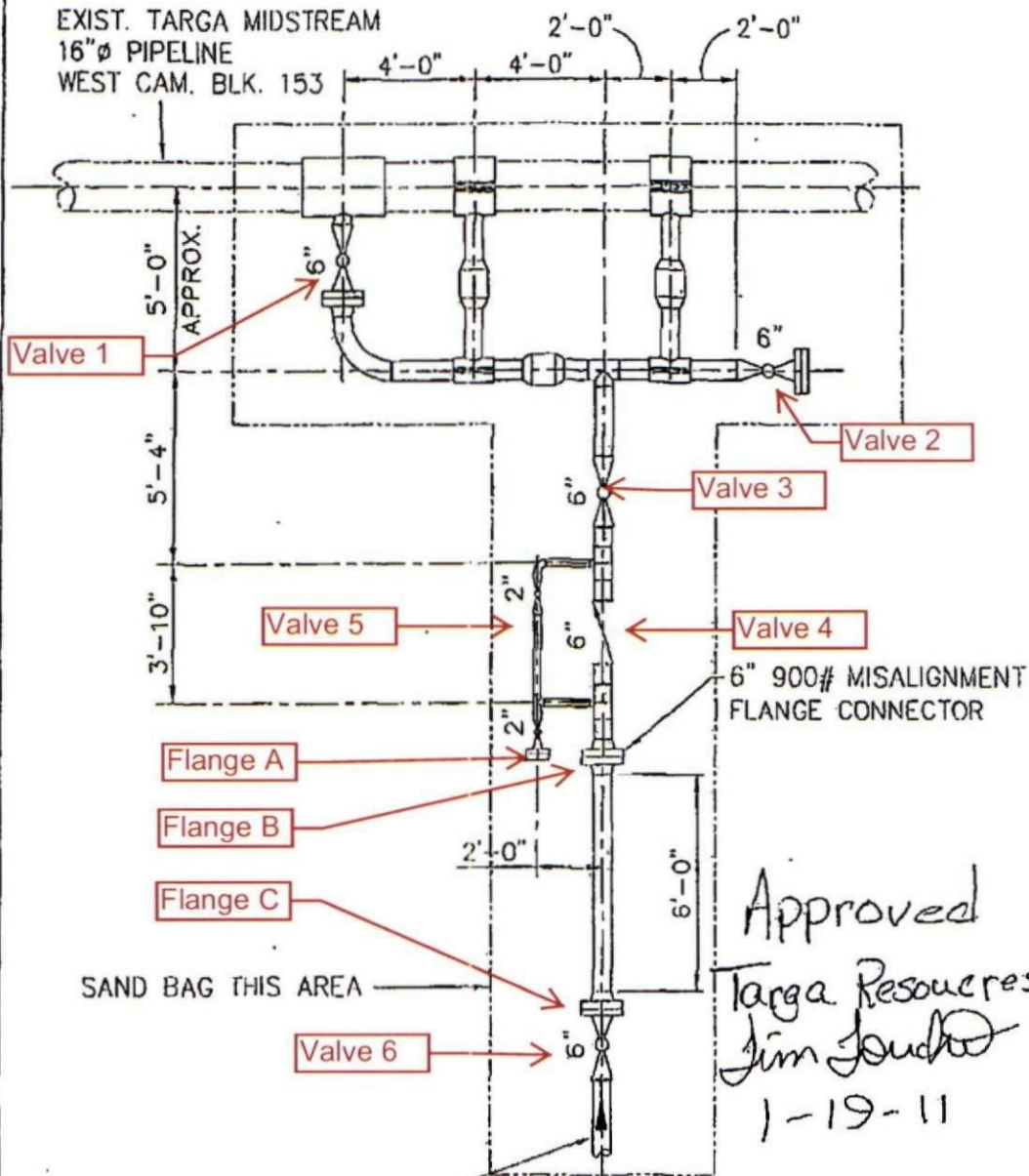
BOEMRE Segment No.:	18228
Pipeline Description:	6" Gas
MAOP:	1300
Total Pipeline Length:	31,317'
Pipeline Capacity:	1,095 bbls

Abandonment Procedure

1. Mobilize and set up filtration crew at VR 60 A- and DSV at VR 60 12--in SSTI.
2. The receiving crew at the WC 130 B Platform will isolate the pipeline from the production system. They will then insure that discharge from the pipeline is "lined up" to the equipment to be used to handle displaced fluids from the pipeline being abandoned. All hydrocarbons will be captured for proper disposal while water will be tested and processed as needed before being discharged overboard.
3. DSV at the WC 153 16-in SSTI will:
  - Close Valve 1, Valve 3, and Valve 5. Count the number of turns.
  - Confirm Valve 2 is closed
  - Bleed down the pipeline from both ends
  - Remove Flange A and install flushing flange
  - Notify the platform that the pipeline is ready to be flushed
4. Flush the pipeline with seawater from the SSTI back to the platform until it is cleared of hydrocarbons by confirmation of a clean static sheen test. An in-line flow meter will be used to confirm the volume of water pumped.
5. Bleed down the pipeline to 0.0 psig. Blind flanges, with bleed plugs, will be installed to production piping at each end of pipeline.
6. A 3 to 4 ft section of the riser above the water line will be removed at EC 172 A and a plumber's plug installed at the top the each riser. Saws will be utilized to make the required cuts. Note: pipe **shall not** be "torch cut".
7. Divers at WC 153 16-in SSTI will:
  - Close Valve 6
  - Disconnect the pipeline at Flange B and Flange C
  - Retrieve the section to the surface.
  - Install 6" ANSI 900 RTJ flange (w/ 1-in tap s/s ball valve and plug) on Flange A.
  - Install a plumber's plug in the end of the pipeline being left in-place and bury the end to 3' of cover and place a pallet of sand/cement bags place on top.
  - Replace cover over the SSTI to the condition that it was in before it was uncovered. 2 extra pallets of pure sand bags will be onboard in case the original bags are not enough to re-cover the assembly to at least 3-ft.
8. Divers will relocate to WC 130 B:
  - Jet out the pipeline approximately 20' from the base of the riser and "cold cut" the pipe at that point. A pollution dome will be set above each cut point.
  - Divers will then "cold cut" the riser above the tube-turn and retrieve the tube-turn and section of pipe to surface.
  - A plumber's plug will then be installed in the cut end of the pipeline and the end buried to 3' of cover and a pallet of sand/cement bags place on top.
9. Demobilize DSV.



EXIST. TARGA MIDSTREAM  
16"Ø PIPELINE  
WEST CAM. BLK. 153



Approved  
Targa Resources  
Jim Joudo  
1-19-11



Eni Petroleum

PROPOSED SUBSEA PIPELINE TIE-IN  
WEST CAMERON BLK. 153



CASHARIAN ENGINEERING ASSOCIATES, L.L.C.  
NEW ORLEANS HOUSTON

Drawn By:  
D.J.B.

Date:  
1/12/11

Project No.  
05133N03

Des.  
SKT-3





**eni us operating**  
eni us operating co. inc.  
1200 Smith Street, Suite 1700  
Houston, TX 77002  
Tel. 713-393-6100 Fax 713-393-6205

February 1, 2017

Regional Supervisor  
Bureau of Safety and Environmental Enforcement (BSEE)  
Pipelines Section  
1201 Elmwood Park Blvd.  
New Orleans, Louisiana 70123-2394

Bureau of Safety and Environmental Enforcement (BSEE)  
**RECEIVED**

**FEB 03 2017**

Office of Field Operations  
Pipeline Section

Attention: Ms. Angie Gobert

Re: Relinquishment and Proposed Abandonment In-Place of Right-of-Way Pipeline – 6" GAS  
(Segment No. 18228, ROW G29065), Originating at West Cameron Block 130, Platform B  
and Terminating at West Cameron Block 153, 16-inch SSTI, OCS Federal Waters, Offshore,  
Louisiana

Ms. Gobert:

Eni US Operating Co. Inc. (Eni) herein applies, in triplicate, for the relinquishment and abandonment of the pipeline listed below, pursuant to the authority granted in The Outer Continental Shelf Lands Act as amended (43 U.S.C. 1331 et seq.) and in compliance with the regulations contained in Title 30 CFR Subpart J, Pipelines and Pipeline Right-of-Way. Pipeline information is as follows:

Segment Number	ROW	Origin	Terminus	OD	Length	Product	Operator
18228	G29065	WC130 B	WC153 SSTI	6"	31317'	GAS	ENI US Operating Co. Inc.

Regarding the pipeline abandonment in place:

- Eni requests a departure from 30 CFR 250.1010(h), which requires removal of a ROW pipeline. Eni requests to abandon this pipeline in-place.
- Eni requests a waiver from pigging the line. In lieu of pigging, the pipeline will be flushed with seawater until free of hydrocarbons.

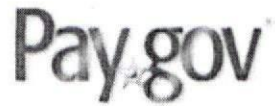
In support of this application, please find the following attached:

- Proposed Pipeline Abandonment Procedure & Subsea Tie-in Schematic
- PayGov receipt in the amount of \$2,170.00 to cover the processing fee for the Application to Decommission the Right-of-Way Pipeline.

Please direct any questions concerning this application to Erin Rachal at (713) 969-1311. Please direct any technical questions to Esau Velazquez, Sr. Project Manager at (713) 969-1363.

Sincerely,

Franco Picciani  
VP Technical Services



## Receipt

Your payment is complete

Pay.gov Tracking ID: 260F0OP7

Agency Tracking ID: 75177705365

Form Name: Application to Decommission a pipeline - ROW

Application Name: BSEE Application to Decommission a ROW Pipeline - BU

### Payment Information

Payment Type: Debit or credit card

Payment Amount: \$2,170.00

Transaction Date: 02/02/2017 02:02:44 PM EST

Payment Date: 02/02/2017

Region: Gulf of Mexico

Contact : Erin Rachal 713-969-1311

Company Name/No: ENI US Operating Co. Inc , 02782

Pipeline Segment No: 18228

Originating Area/Block: West Cameron WC, 130

Terminating Area/Block: West Cameron WC, 153

### Account Information

Cardholder Name: Fieldwood Energy LLC

Card Type: Master Card

Card Number: \*\*\*\*\*7372

### Email Confirmation Receipt

No confirmation email was provided during the creation of this transaction.

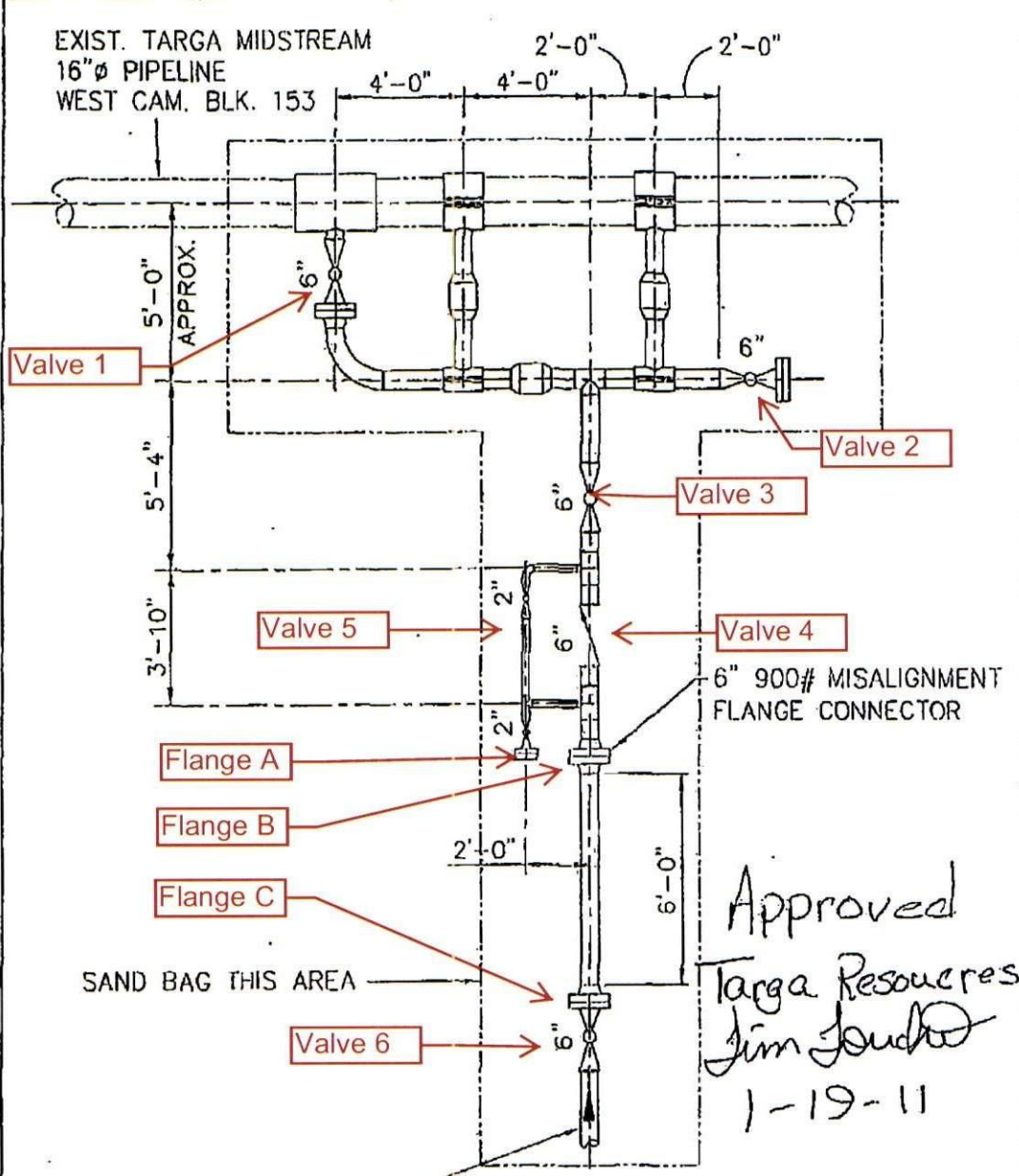
Eni US Operating Co. Inc.  
Pipeline Segment No. 18228  
Originating at West Cameron 130 B and  
Terminating at West Cameron 153 16SSTI (Targa)  
Proposed Pipeline Abandonment Procedure

General Information

BOEMRE Segment No.:	18228
Pipeline Description:	6" Gas
MAOP:	1300
Total Pipeline Length:	31,317'
Pipeline Capacity:	1,095 bbls

Abandonment Procedure

1. Mobilize and set up filtration crew at VR 60 A- and DSV at VR 60 12--in SSTI.
2. The receiving crew at the WC 130 B Platform will isolate the pipeline from the production system. They will then insure that discharge from the pipeline is "lined up" to the equipment to be used to handle displaced fluids from the pipeline being abandoned. All hydrocarbons will be captured for proper disposal while water will be tested and processed as needed before being discharged overboard.
3. DSV at the WC 153 16-in SSTI will:
  - Close Valve 1, Valve 3, and Valve 5. Count the number of turns.
  - Confirm Valve 2 is closed
  - Bleed down the pipeline from both ends
  - Remove Flange A and install flushing flange
  - Notify the platform that the pipeline is ready to be flushed
4. Flush the pipeline with seawater from the SSTI back to the platform until it is cleared of hydrocarbons by confirmation of a clean static sheen test. An in-line flow meter will be used to confirm the volume of water pumped.
5. Bleed down the pipeline to 0.0 psig. Blind flanges, with bleed plugs, will be installed to production piping at each end of pipeline.
6. A 3 to 4 ft section of the riser above the water line will be removed at EC 172 A and a plumber's plug installed at the top the each riser. Saws will be utilized to make the required cuts. Note: pipe **shall not** be "torch cut".
7. Divers at WC 153 16-in SSTI will:
  - Close Valve 6
  - Disconnect the pipeline at Flange B and Flange C
  - Retrieve the section to the surface.
  - Install 6" ANSI 900 RTJ flange (w/ 1-in tap s/s ball valve and plug) on Flange A.
  - Install a plumber's plug in the end of the pipeline being left in-place and bury the end to 3' of cover and place a pallet of sand/cement bags place on top.
  - Replace cover over the SSTI to the condition that it was in before it was uncovered. 2 extra pallets of pure sand bags will be onboard in case the original bags are not enough to re-cover the assembly to at least 3-ft.
8. Divers will relocate to WC 130 B:
  - Jet out the pipeline approximately 20' from the base of the riser and "cold cut" the pipe at that point. A pollution dome will be set above each cut point.
  - Divers will then "cold cut" the riser above the tube-turn and retrieve the tube-turn and section of pipe to surface.
  - A plumber's plug will then be installed in the cut end of the pipeline and the end buried to 3' of cover and a pallet of sand/cement bags place on top.
9. Demobilize DSV.



**Eni Petroleum**  
PROPOSED SUBSEA PIPELINE TIE-IN  
WEST CAMERON BLK. 153

Drawn By: D.J.B.	Date: 1/12/11	Project No.: 05133N03	Dwg. No.: SKT-3	
---------------------	------------------	--------------------------	--------------------	--

CASHARIAN ENGINEERING ASSOCIATES, L.L.C.  
NEW ORLEANS HOUSTON

## Lease Term and ROW Pipeline Decommissioning Engineering Analysis

Segment No. 18228 Right-of-Way: No. 629065

Lease/ROW Holder: Eni US Operating Co. Inc.

Company Code: 02782

Identified Operator (ROW Only): 11

Company Code: 11

Technical Contact: Erin Roschal

Phone Number: 713-969-1311

### A. Pipeline Application Information:

- i)  Lease Term (LT) Pipeline?  
Application Fee of \$1,142.00
- ii)  Right of Way (ROW) pipeline  
 Application Fee of \$2,170.00 Relinquishment (Complete)  
**(If partial relinquishment, application may be a ROW modification)**
- iii)  Procedures for Decommissioning (In-Place/Removal/Both) are present

#### In-Place:

- iv) Is Pipeline being pigged as per 30 CFR 250.1751(b) ?  
 Yes  
 No, Is a departure/waiver requested? yes
- v) Is pipeline being flushed and filled with seawater per 30 CFR 250.1751(c) & (d)  
 Yes  
 No, Is a departure/waiver requested and explanation? \_\_\_\_\_
- vi)  Is pipeline being cut and plugged at each end of the pipeline?
- vii)  Is each end of the pipeline being buried 3 feet below the seafloor or cover each end with protective concrete mats for water depths up to 500 ft?
- viii)  Are all pipeline valves and fittings (that could unduly interfere with other uses of the (OCS)) being removed?

#### Removal:

- ix) Is Pipeline being pigged as per 30 CFR 250.1752(b)  
 Yes  
 No, Is a departure/waiver requested and pipeline being flushed and filled until no presence of hydrocarbons? \_\_\_\_\_
- x) Is pipeline being flushed and filled with seawater per 30 CFR 250.17851(c)  
 Yes  
 No, Is a departure/waiver requested and explanation? \_\_\_\_\_

NOTE: If both see steps (i) to (ix) and include the following:

- xii)  Lengths of pipe to be removed and to be decommissioned In-Place.  
Removal \_\_\_\_\_ In-Place \_\_\_\_\_

### B. Data Entry and Administrative Tasks:

- i) Contact for decommissioning application Erin. Navigate from the Permit Tracking Form through the Contacts tab and select the mail contact for the application shown as "Application - Mail Contact" under Contact Type and select by highlighting. Click the blue arrow under Contact Information and proceed to query on the particular company's name searching for the contact that has submitted and signed the report. Ensure that the correct address accompanies the contact and then select. If the contact name is not shown or the address that accompanies the contact is incorrect, confirm with company contact.
- ii) From Pipeline Tracking click on Navigate Button or ALT: N and click Paygov Transactions. From Paygov Transaction screen input the transaction ID number with the associated Segment Number into the Paygov Trans ID window, or press blue down arrow to search.
- iii) From Pipeline Tracking click on application "Sub Type" button and check the type that applies. (In-Place, In-Place/Removal, or Removal)
- iv) From the Permit Tracking Form, click on the Initial Pipeline Submittal field "Letter Date". Then click on the "Modify/Add Review" tab located in the bottom left corner of the form. On next screen, click on the "Add a Review" tab and select the "Pipeline Engineers Review" and If ROW Relinquishment then generate Adjudication Review select "Adjudication Review. Make sure you have the correct submittal type shown at the top of the Generate, Add, Modify Pipeline Reviews screen. Click on "OK" then press F10 to save or use the disk icon on the tool bar. Close the window. On the Pipeline Tracking Form within the "Application Review Coordination" section, locate the "Adjudication Review" review and click on the "Letter" tab. Print the letter, sign it for the engineer, attach copy of cover letter, and forward it to the Adjudication Section Mail Stop (MS) 5421.

- v) For all types (LT/ROW), update the Pipeline Masters Page. From the Permit Tracking Form, click on the Pipeline Masters button.
1. Update the Pipeline Status to PABN (Proposed Abandonment In-place or both) or PREM (Proposed Removal)
  2. Update Abandonment Type to either In-place / removal, or both.
  3.  Out of Service (OOS) Date?
    - a. If not present, click on "History" Tab and input date of pipeline then appropriate code for OOS (O) and type a brief statement of when pipeline was OOS and when MMS was notified of date.
    - b. If company is Out of Compliance for notification of OOS issue 1 office Incident of Non-Compliance (INC) referencing a Potential Incident of Non-Compliance L-821 and Enforcement Action of Warning (W) and Authority being 30 CFR 250.1008(c). See INC form in G:\FO\PIPELINE\LETTERS\INC.INC.DOC
  4.  Flush and Fill (FF) Date per 30 CFR 250.1006(b)(2) ?
    - a. If not present, click on "History" Tab and input date of pipeline then appropriate code for FF (U) and type a brief statement of when pipeline was FF and when MMS was notified of date.
    - b. If company is Out of Compliance for not Flushing and Filling (pickling) after a pipeline is OOS for 1 year as per 30 CFR 250.1006(b)(2) issue 1 office INC referencing a PINC G-803 and Enforcement Action of Warning (W) and Authority being 30 CFR 250.1006(b)(2). See INC form in G:\FO\PIPELINE\LETTERS\INC.INC.DOC
  5. If Right-of-Way, click on ROW Info button to edit the status of the ROW:
    - a. If company is In-compliance with OOS requirement and/or temporary cessation has not expired. change status code from "Active" to "Relinquished" and input date Received and date of letter in the "Relinquished Date"
    - b. If ROW has expired due to non-notification or temporary cessation expired change status code from "Active" to "Expired".

**C. Approval Letter Preparation:**

1.  All issues are resolved.
2.  Verify that the Adjudication Review has been completed and accepted by Adjudication Section (If ROW)
3.  From the Permit Tracking Form, click the Application Letter button at the bottom of the Permit Tracking Form and send the letter to the G drive by selecting "file" from the drop down menu under "Destination Type" and then clicking the "green light". Then, go to G:\FO\PIPELINE\LETTERS. This folder lists letters alphabetically by company and in segment number order under each company. The completion letter for a particular company and segment number. Either (1) print the letter and make handwritten changes, or (2) make the changes electronically and save in the RICH TEXT FORMAT and print. Note: If departure is approved/not approved add departure statement, If ROW expired add expiration paragraph. .
4.  Attach the draft to the original application and include a copy (for scanning) if it is an ROW pipeline. Check the bcc list. Application and amendments are organized in chronological order with the most recent first. Do not include fee payment or similar information in the scanning copy of application
5.  Ensure that all of the information contained on the letter is as it should be.
6.  Bring the letter and attachments to the Out Box for Typing and input to typing date in Pipeline Tracking Screen.
7.  After proofing the letter and when all is accurate, surname it and bring to Engineer or supervisor final review and signature.

