

18805

In Reply Refer To: MS 5232

JUN 29 1998

Mr. K. J. Cheramie
Viosca Knoll Gathering Company
Sugar Mill Point
1115 Regal Row
Houma, Louisiana 70360

Dear Mr. Cheramie:

In accordance with 30 CFR 250.158(b), your letter dated May 28, 1998, transmitted a pipeline construction report for the following right-of-way pipeline located in Main Pass Block 281, Lease OCS-G 10910:

<u>Pipeline Segment No.</u>	<u>Size (inches)</u>	<u>Length (feet)</u>	<u>Service</u>	<u>From</u>	<u>To</u>
11490 (Right-of-Way OCS-G 18805)	16	198	Gas	A 20-inch SSTI	A 20-inch SSTI

The data provided in the report, including the following test information establishes the assigned maximum allowable operating pressure (MAOP) for the pipeline:

<u>Pipeline Segment No.</u>	<u>Test Pressure (psig)</u>	<u>Duration (hours)</u>	<u>MAOP (psig)</u>	<u>MAOP Determination</u>
11490	3,282	4	1,500	Receiving pipeline

The high- and low-pressure sensors shall be set, respectively, no higher than 15 percent above and below the normal operating range. However, the high pilot shall not be set higher than the MAOP of the pipeline.

The total length of the "as-built" pipeline right-of-way is .04 miles.

Sincerely,
(Org.Sgd.) J. R. Hennessey

Donald C. Howard
Regional Supervisor
Field Operations

bcc: 1502-01 Segment No. 11490, ROW OCS-G 18805 (MS 5232)
1502-01 ROW OCS-G 18805 (Microfilm) (MS 5033)
MS 5232 Carto

JG Guidry:amm:6/8/98:Viosca.490

VIOSCA KNOLL GATHERING COMPANY
Sugar Mill Point, 158 Regal Row
Houma, LA 70360
(504)868-6785

May 28, 1998

Microfilm

U.S. Department of the Interior
Minerals Management Service
Gulf of Mexico OCS Region
1201 Elmwood Park Boulevard
New Orleans, LA 70123-2394
Attention: Alex Alvarado

Re: Proof of Construction, Pipeline Right of Way,
OCS-G 18805, Segment No. 11490, VK Main
Pass Block 281 Jumper Line

Dear Alex:

On September 23, 1997, amended application was approved for the installation of 0.04 miles of sixteen inch (16") pipe between an existing 20" pipeline, OCS-G 14292, Seg. No. 10232, and a proposed 20" pipeline OCS-G 18792, Seg. No. 11465, all in Main Pass Block 281.

In accordance with 30 CFR 250.158 (b) and appropriate guidelines, we attach herewith in triplicate, the "As-Built" Drawings covering the above referenced pipeline, along with three (3) copies of the hydrostatic test data.

If you should require any additional information regarding this matter, please call this office.

Sincerely,



K. J. Cheramie
Principal Property Rights Specialist

KJC:kjc

cc: M. Handley
M. Gragg
File



Project Consulting Services, Inc.

3300 West Esplanade Ave. S., Suite 500

Metairie, LA. 70002-7406

Phone (504) 833-5321

Fax(504) 828-7370

BEST AVAILABLE COPY

HYDROSTATIC TEST REPORT

LINE NUMBER: 527A-2400

DRAWING NUMBER: VKGE F2-527A-2400-3A & 3B

SECTION TESTED: SUBSEA RISER TIE IN & BLANCE LINE

SIZE O. D. 20 1/2 IN. 750 W.T. 1/2 GRADE: NEW MATERIAL

TEST PRESSURE: 3240 DESIGN PRESSURE: _____

FABRICATION CONTRACTOR: McDERMOTT

HYDROSTATIC TEST CONTRACTOR: GREENS PRESSURE TESTING

COMRANY PERSONNEL INVOLVED: MIKE BOURGEOIS

PRESS. RECORDER SERIAL NO.: 242E-57212 CALIBRATION DATE: 11/13/97

TEMP. RECORDER SERIAL NO.: 242E-57212 CALIBRATION DATE: 11/13/97

DEAD WEIGHT SERIAL NO.: 53918.1 CALIBRATION DATE: 11/10/97

DATE OF TEST: 11/19/97

NAME OF OPERATOR: BOBBY DAVIDSON

TEST RESULTS: ACCEPTED

FAILURE DATA: N/A

TIE WELDS WERE N.D.T. METHOD: X-RAY

NONDESTRUCTIVELY TESTED BY: GLOBAL X-RAY

MISC. COMMENTS: TEST WAS RUN FOR (4 1/2) HOURS @

3240* Min 3340 Max

APPROVED

CONTRACTOR QA. _____

CUST. INSPECTOR. William J. [Signature]



(COMPANY)

BEST AVAILABLE COPY

FACILITY TEST REPORT

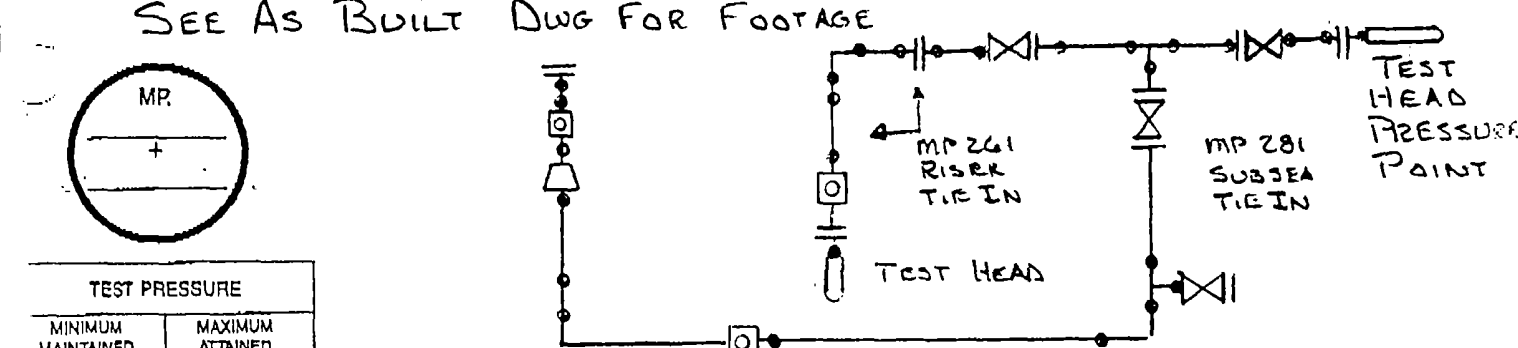
SEE PROCEDURE TG 6-129 FOR INSTRUCTIONS

SHEET _____ OF _____

DISTRICT	LINE NO., COMPRESSOR/METER STATION	SPREAD	SECTION	DATE
	527A-2400		MP-261 SUBSEA RISER TIE IN TIE IN MP 281 BALANCE	11/19/97
DRAWING NO. AND DATE		LOCATION	SECTION TESTED	FOOTAGE
URGE F2-627A-2400-3A URGE F2-627A-2400-3B		FROM MLV TO MLV	SEE SKETCH TO STA.	
NOMINAL PIPE:	SIZE O.D. 20" 16" IN.	WT. .750 656 IN.	GRADE X-60 X-52	MFR. VARIOUS
100% S.M.Y.S. PRESSURE	PSIG	M.A.O.P. PRIOR TO TEST	PIPELINE CONTRACTOR	
DESIGN PRESSURE	PSIG		McDERMOTT	
HYDROSTATIC TEST CONTRACTOR	CONTRACTORS PROJECT MANAGER			
GREENE'S PRESSURE TESTING				
COMPANY PERSONNEL INVOLVED		USEFUL CONVERSION		
MIKE BOURGEOIS		• 1 FOOT OF WATER = .433 PSI • GAL/IN. $\approx 10^2 \times .0408$		
		FACTORS: • 1 PSI = 2.31 FEET OF WATER •		

TEST MEDIUM	WATER SOURCE & TEMPERATURE: MILE POST	PIPE TESTED	<input type="checkbox"/> IN PLACE	<input checked="" type="checkbox"/> PRE-TESTED
H ₂ O	MORGAN CITY TAP WATER			
END OF TEST SECTION	PRESSURE POINT	HIGH ELEVATION	LOW ELEVATION	END OF TEST SECTION
MAP PLUS	YARD TEST			
ELEVATION (FEET)				
TEST PRESSURE (PSI)				
% S.M.Y.S.				

TEST SECTION NO. _____



TEST PRESSURE	PRESSURE RECORDER	WATER TEMP RECORDER	GROUND TEMP RECORDER	DEAD WEIGHT	PRESSURE PUMP	MANIFOLDS
MINIMUM MAINTAINED: 3280	MAXIMUM ATTAINED: 3340	242E-57212	242E-57212	53918-1		
SERIAL NO.	RANGE	MANUFACTURE	CALIBRATION DATE			
	Δ-5000	BARTON	11/13/97	Δ-5000	VAETRIX	gal/Stroke
FAILURE DATA	DATE	TIME	A.M./P.M.	MAP STATION	ELEVATION	FAILURE PRESSURE
(OBSERVED AT FAILURE PT)						PSIG % S.M.Y.S.
DESCRIPTION (ATTACH SKETCH OR PHOTO)				REPAIRS MADE (USE BACK IF NEEDED)		

ALL TIE-IN WELDS WERE NONDESTRUCTIVELY TESTED METHOD: X-RAY NONDESTRUCTIVELY TESTED BY GLOBAL X-RAY

IN DATA DERIVED FROM PROFILE SHEET TG- OR U.S.G.S. QUAD SHEET.

TEST REJECTED	TEST ACCEPTED	DATE
	TEST INSPECTOR SIGNATURE: <i>William J. P...</i>	11/19/97
NOTE: SEE ABOVE FAILURE DATA	DISTRICT SIGNATURE:	
SIGNATURE:	DIVISION SIGNATURE:	
DATE:	GOVERNMENT AGENCY SIGNATURE:	

Rentals, Inc.

G.P.T. # 616438
 MISCELLANEOUS TEST RECORD TICKET

Date: 11/19/97

CHARGE JRAY McDerholt DPLG. CONT. Produce Tien
 ADDRESS P.O. BOX 188 PARISH Terrebonne (LA) WELL # _____
 CITY McGraw City, LA 70381 ORDER # Job # mp 8009 UNIT 4820
 LEASE V. K. G. C. FIELD Yield Analysis/Initial p.c.s - 261 McKig 3880
 DEAD WT. SER. # 58918-1 TEMP. RECORDER SER. # 242E-57212 PRESS. RECORDER SER. # 242E-57212
 TESTED PRESSURE 3240 (MIN) / 3350 (MAX) TIME ARRIVED 6:00 AM COMP. 6:00 PM

TIME	DEAD WT.	PRESS. RECORDER	TEMP. RECORDER	AMBIENT THERM.	TIME	DEAD WT.	PRESS. RECORDER	TEMP. RECORDER	AMBIENT THERM.
8:45	3284	3240	55°	52°					
9:00	3282	3260	54°	52°					
9:15	3282	3260	53°	52°					
9:30	3282	3260	58°	52°					
9:45	3282	3260	53°	53°					
10:00	3282	3260	52°	53°					
10:15	3282	3260	52°	54°					
10:30	3283	3260	54°	56°					
10:45	3288	3260	54°	56°					
11:00	3292	3270	56°	57°					
11:15	3292	3270	56°	57°					
11:30	3304	3280	57°	59°					
11:45	3304	3280	57°	59°					
12:00	3313	3280	57°	59°					
12:15	3317	3280	57°	59°					
12:30	3320	3300	61°	63°					
12:45	3320	3300	61°	63°					
1:00	3334	3314	60°	62°					
1:15	3340	3320	60°	62°					

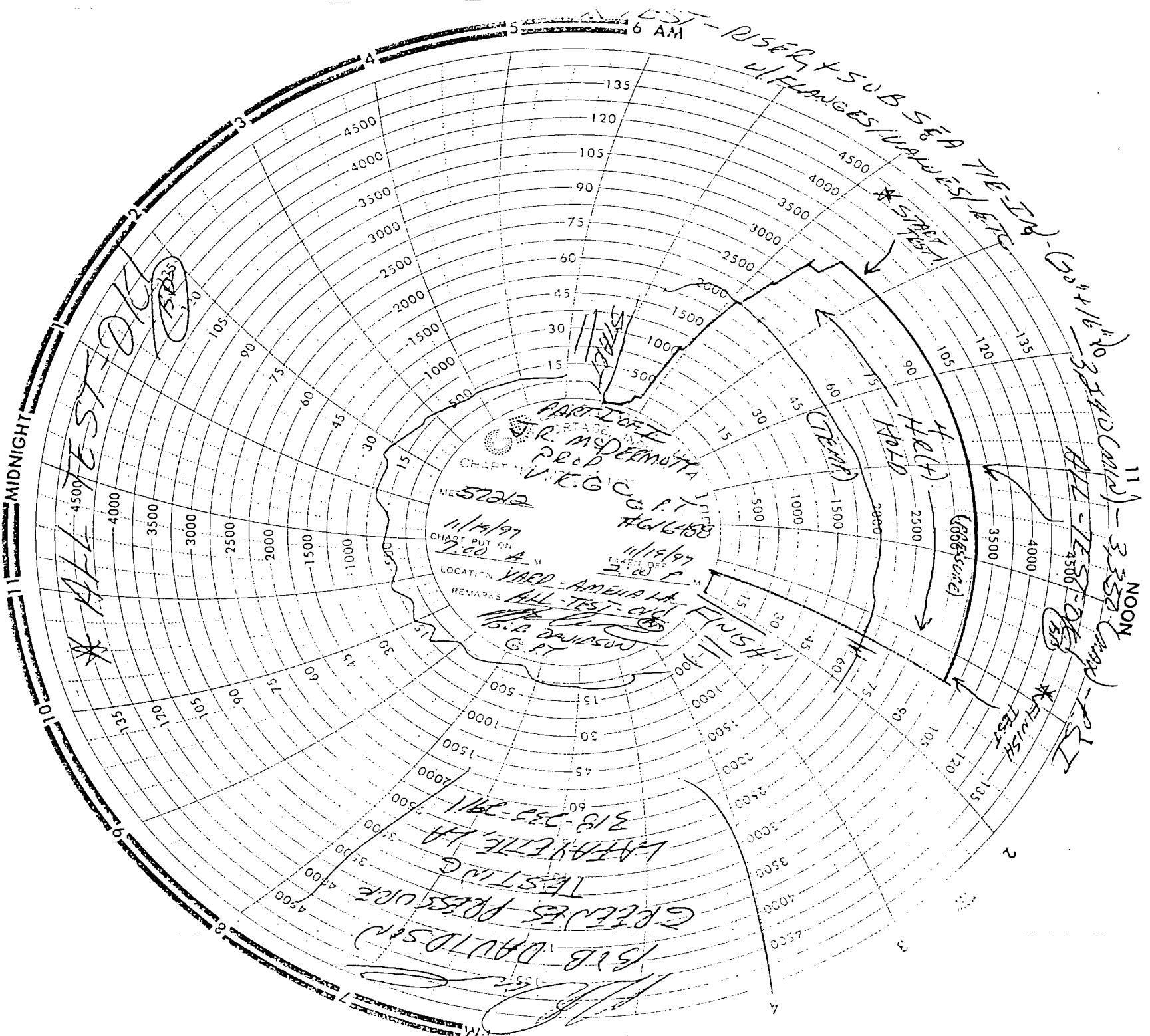
All Test - O.K. (B.F.)

WEATHER CONDITIONS: Cool - Cloudy - Windy - Misty

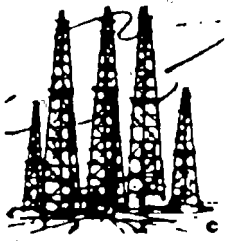
NOTES: _____

Robert B. Engstrom Jr.
 UNIT OPERATOR
Robby Davidson

Walter Brumfield
 COMPANY REPRESENTATIVE



BEST AVAILABLE COPY



**DOWN
HOLE
PRESSURE, INC.
INSTRUMENT RENTALS & REPAIRS**

Phone (318) 837-2755
Fax (318) 837-2756
1036-A South Cruse Ave
Broussard, LA 70518

Surface Gauges
Dead Weight Testers
Barton Recorders
Vaetrix Gauge 1
5, 10 & 20,000 PSI

Sub Surface Gauges
Electronic & Mechanical
0-25,000 PSI Ranges
Temperature Gauges
0-450 Degrees F.

**TEMPERATURE
CALIBRATION CERTIFICATE**

BARTON METER

SERIAL NUMBER 242E-57212

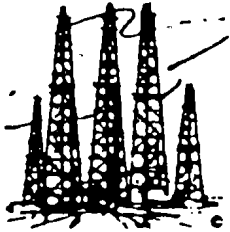
RANGE 0 to 150 Deg. F

Calbrated in Vertical Position

This is to certify that this instrument has been inspected and tested against Digital Thermometer No. 301800 traceable to National Institute of Standards & Technology (NIST) Instrument Model #10-TM99A-E & Probe Model #10-1075, Calibrated 05/09/1997.

Special Conditions: _____

DATE OF CALIBRATION 11-13-97 TECHNICIAN Hessie Lavoie



**DOWN
HOLE
PRESSURE, INC.**
INSTRUMENT RENTALS & REPAIRS

Phone (318) 837-2755
Fax (318) 837-2756
1036-A South Cruse Ave
Broussard, LA 70518

Surface Gauges
Dead Weight Testers
Barton Recorders
Vaetrix Gauge 1
5, 10 & 20,000 PSI

Sub Surface Gauges
Electronic & Mechanical
0-25,000 PSI Ranges
Temperature Gauges
0-450 Degrees F.

CALIBRATION CERTIFICATE
BARTON METER

SERIAL NUMBER 242E-57212 PRESSURE RANGE 5000 PSI

Calbrated in Vertical Position

Temperature 70 F.

This is to certify that this instrument has been inspected and tested against Pressure Standard Chandler Engineering Dead Weight Tester Model # 58-200H, Serial # 16210 traceable to the National Institute of Standards and Technology, NIST Reference # 105, Procedure # MTP-142. Calibration Control # 04297099-01. The calibration system conforms to the requirements of ISO-9000 criteria. (MIL-STD. 45662A). Date Calibrated (04-01-1997).

Special Conditions: _____

DATE OF CALIBRATION 11-13-97 TECHNICIAN Reggie Sanoie

BEST AVAILABLE COPY

Vaetrix Test Analysis

Customer Name : Greene'S Pressure Testing
 Mailing Address : 305 Pinehurst
 City / State : Lafayette La 70508
 Sales Order No : RA#12585
 Certificate No. : 472329
 Gauge Serial No. : 53918-1

Piston/Cylinder No : 1336A
 Mass Set Identity : 1220A
 Full Scale Output : 5000 PSI
 Linearity (% F.S.O.) : 0.097% PASS
 Hysteresis (% F.S.O.) : 0.040% PASS

First Increasing Run

PSI	APPLIED	I. R.	
0	0.000	0	
1000	997.918	999	PASS
2000	1996.539	1999	PASS
3000	2995.160	2998	PASS
4000	3993.777	3996	PASS
5000	4992.395	4992	PASS

First Decreasing Run


PSI	APPLIED	I. R.	
0	0.000	0	PASS
1000	997.918	1001	PASS
2000	1996.539	2001	PASS
3000	2995.160	3000	PASS
4000	3993.777	3997	PASS
5000	4992.395		


Second Increasing Run

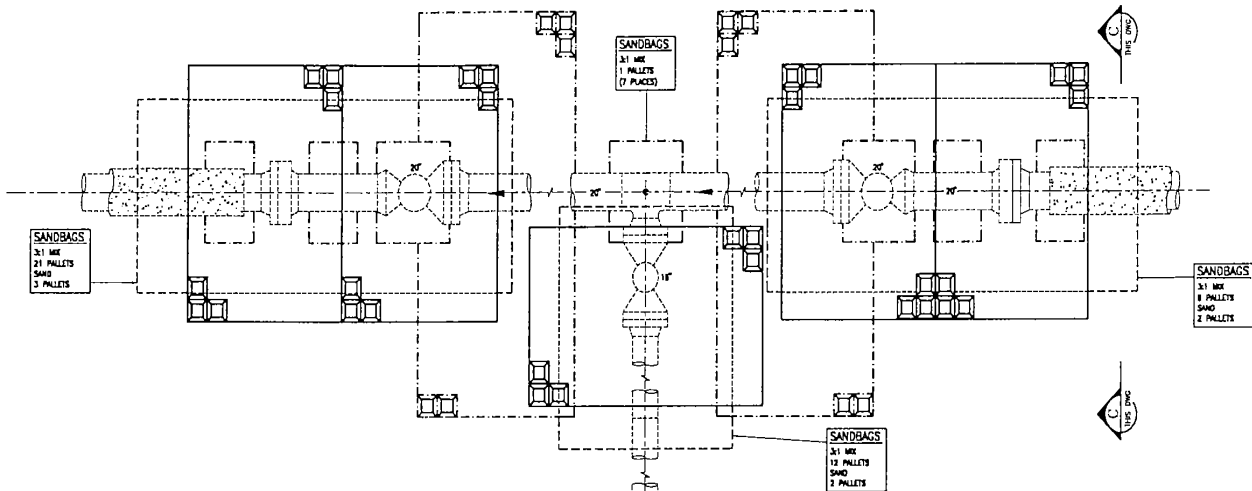
PSI	APPLIED	I. R.	
0	0.000	0	
1000	997.918	999	PASS
2000	1996.539	1999	PASS
3000	2995.160	2998	PASS
4000	3993.777	3996	PASS
5000	4992.395	4992	PASS

Second Decreasing Run

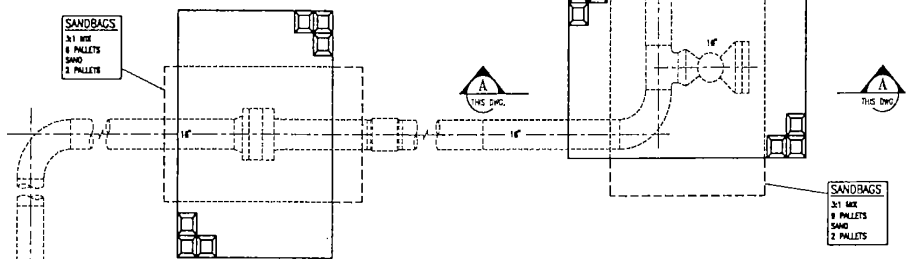
PSI	APPLIED	I. R.	
0	0.000	0	PASS
1000	997.918	1001	PASS
2000	1996.539	2001	PASS
3000	2995.160	3000	PASS
4000	3993.777	3997	PASS
5000	4992.395		

Test Performed By : 

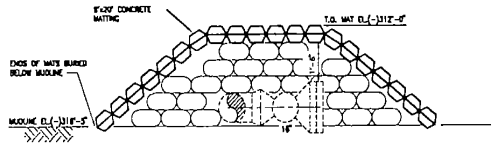
Quality Assurance : 



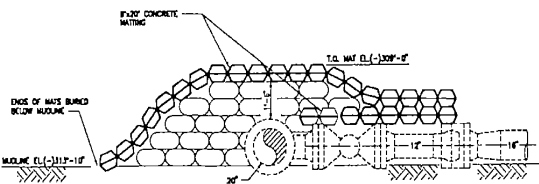
BEST AVAILABLE COPY



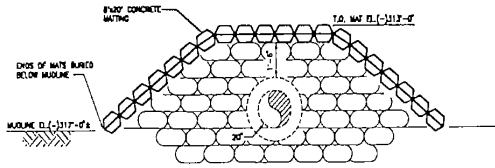
LEGEND
 - - - - - INDICATES LOCATION UNDER PIPELINE
 - - - - - INDICATES LOCATION UNDER TOP CONCRETE MATS
 - - - - - INDICATES OUTLINE OF SANDBAGGING



SECTION A
 SCALE: 3/8" = 1'-0"
 THIS DWG.



SECTION B
 SCALE: 3/8" = 1'-0"
 THIS DWG.



SECTION C
 SCALE: 3/8" = 1'-0"
 THIS DWG.

AS-BUILT

DATE MAR 31 1998 PCS# 97079

PLAN
MAIN PASS BLOCK 281
SUBSEA TIE-OVER COVER DETAILS
 SCALE: 3/8" = 1'-0"

G18805

DRAWING NO.		DATE		REFERENCE DRAWINGS		TITLE		REVISIONS	
NO.	BY	NO.	DATE	NO.	DATE	NO.	DATE	BY	DESCRIPTION
001	...	001	...	001	...	001
002	...	002	...	002	...	002

VIOSCA KNOLL GATHERING COMPANY

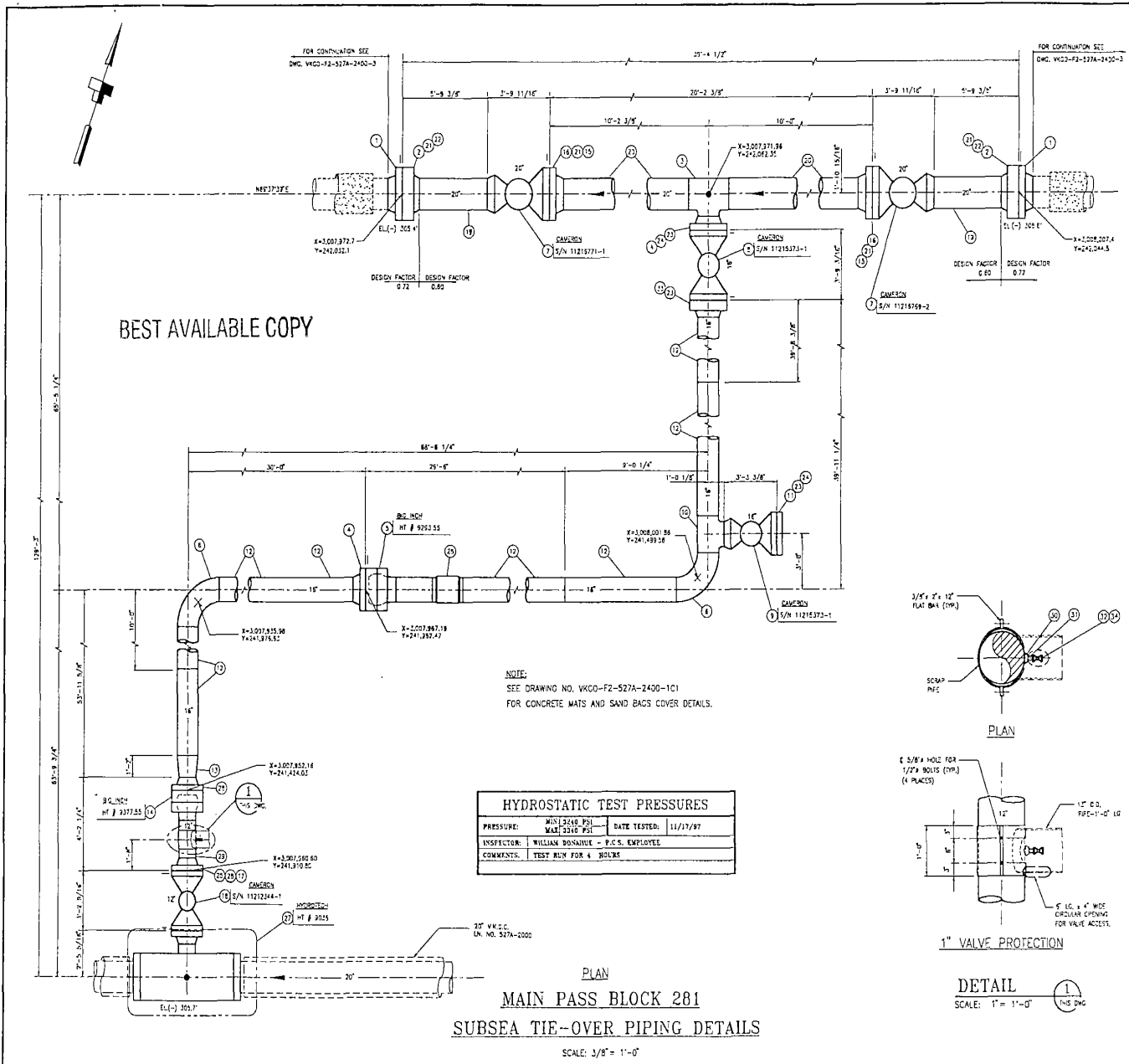
Drawn By:
 Project Consulting Services, Inc.
 11202 Washington, Suite 330
 Houston, Texas, 77048-2218
 (713) 854-1288

DESIGNED BY:	DATE:
CHECKED BY:	DATE:
DRAWN BY:	DATE:
APPROVED BY:	DATE:
SCALE:	DATE:
PCS:	DATE:

MAIN PASS BLOCK 281
LINE NO. 527A-2400
16" SUBSEA TIE-OVER
COVER DETAILS

APPROVED BY:	DATE:
VKGO-F2-527A-2400-3A1	

9/17/2000 3

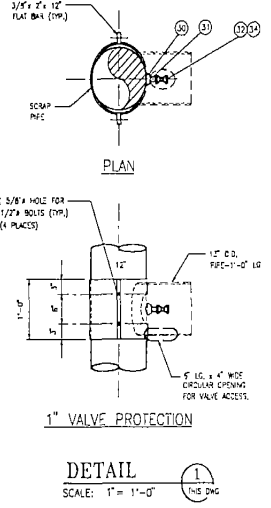


BEST AVAILABLE COPY

NOTE:
SEE DRAWING NO. VKGO-F2-527A-2400-1C1
FOR CONCRETE MATS AND SAND BAGS COVER DETAILS.

HYDROSTATIC TEST PRESSURES			
PRESSURE:	MIN 12240 PSI	DATE TESTED:	11/17/97
	MAX 12240 PSI		
INSPECTOR:	WILLIAM DONAHUE - P.C.S. EMPLOYEE		
COMMENTS:	TEST RUN FOR 4 HOURS		

PLAN
MAIN PASS BLOCK 281
SUBSEA TIE-OVER PIPING DETAILS
SCALE: 3/8" = 1'-0"



BILL OF MATERIALS			
ITEM	QTY.	P.C. NO.	DESCRIPTION
1	2	97-202	FLANGE, 20", ANSI 300#, RTJ WN, MSS-SP-44, F30, 8W 20" O.D. x 0.532" W.T. PPE.
2	2	97-218	FLANGE, 24W, 8W, 20", ANSI 300#, RTJ WN, MSS-SP-44, F30, 8W 20" O.D. x 0.560" W.T. PPE.
3	1	97-227	TEE, WOODROW, 20" O.D. x 0.750" W.T. MIN. x 16" O.D. x 0.650" W.T. BRANCH, MSS-SP-75, Y52.
4	2	1197-227 (1187-28)	FLANGE, 16", ANSI 300# RTJ WN, MSS-SP-44, F30, 8W 16" O.D. x 0.555" W.T. PPE.
5	1	97-215	FLANGE, MISALIGNMENT BALL, 16", ANSI 300#, 8G INCH, RTJ WN, MSS-SP-44, F30, 8W 16" O.D. x 0.650" W.T. APN SL 352 PPE. COMPLETE WITH STUDS & NUTS COATED WITH EP-2 OR EQUIV. STUD LENGTHS TO SUEP STUD TENSILER DEVICE.
6	2	97-213	ELL, 16" O.D. x 0.650" W.T. BR, 30, 90, 90, MSS-SP-75, Y52.
7	2	8512	VALVE BALL 16" CAMERON, ANSI 300#, RTJ W. W. API 6D WITH WOODROW FULL OPEN, GEAR OPERATED, 8W 20" x 0.750" W.T. APN SL 352 PPE. NACE TRM. ALL FITTINGS IN BODY, DRAW, AND SEALANT PORTS TO BE 316SS, FOR SUBSEA SERVICE.
8	1	8514	VALVE BALL 16" CAMERON, ANSI 300#, RTJ W. W. API 6D WITH WOODROW FULL OPEN, GEAR OPERATED, 8W 20" x 0.750" W.T. APN SL 352 PPE. NACE TRM. ALL FITTINGS IN BODY, DRAW, AND SEALANT PORTS TO BE 316SS, FOR SUBSEA SERVICE.
9	1	8514	VALVE BALL 16" CAMERON, ANSI 300#, RTJ W. W. API 6D WITH WOODROW FULL OPEN, GEAR OPERATED, 8W 20" x 0.750" W.T. APN SL 352 PPE. NACE TRM. ALL FITTINGS IN BODY, DRAW, AND SEALANT PORTS TO BE 316SS, FOR SUBSEA SERVICE.
10	1	97-221	TEE, STRAIGHT, 16" O.D. x 0.650" W.T., MSS-SP-75, Y52.
11	1	97-221	FLANGE, BLIND, 16" AND 800#, RTJ, ASTM A165, ANSI B16.5.
12	177	107-107	PPE, 16" O.D. x 0.650" W.T. APN SL 352, USM, COATED WITH 14 TO 16 MILS OF FUSION BONDED EPDM.
13	1	97-222	REDUCER, CONC, 16" O.D. x 0.650" W.T. x 12.750" O.D. x 0.555" W.T., 5W, MSS-SP-75, Y52.
14	1	97-224	FLANGE, MISALIGNMENT BALL, 12", ANSI 300#, 8G INCH, RTJ WN, MSS-SP-44, F30, 8W 12" O.D. x 0.680" W.T. APN SL 352 PPE. COMPLETE WITH STUDS & NUTS COATED WITH EP-2 OR EQUIV. STUD LENGTHS TO SUEP STUD TENSILER DEVICE.
15	40	97-241	BOLTS, STD, 7" x 1 1/2", ASTM A193, CLASS 2A, GRADE B7, WITH THREADS ROLLED AFTER HEAT TREATMENT, W/2 HEAVY HEX NUTS, ASTM A193, CLASS 2B, GRADE 2H, COATED WITH ZYAN OR EQUAL.
16	2	97-222	FLANGE, 20", ANSI 300#, RTJ, WN, MSS-SP-44, F30, 8W 20" O.D. x 0.750" W.T. PPE.
17	20	97-241	BOLTS, STD, 1 3/8" x 1 1/2", ASTM A193, CLASS 2A, GRADE B7, WITH THREADS ROLLED AFTER HEAT TREATMENT, W/2 HEAVY HEX NUTS, ASTM A193, CLASS 2B, GRADE 2H, COATED WITH ZYAN OR EQUAL.
18	1	8512	VALVE BALL 12.750" CAMERON, ANSI 300#, RTJ W. W. API 6D WITH WOODROW FULL OPEN, GEAR OPERATED, NACE TRM. ALL FITTINGS IN BODY, DRAW, AND SEALANT PORTS TO BE 316SS, FOR SUBSEA SERVICE.
19	2	97-227	PPE, 6" LONG, 20" O.D. x 0.750" W.T., TRANSMISSION TO 20" O.D. x 0.650" W.T., APN SL 352 DSW PIPE, PER API SPECIFICATIONS.
20	147	107-107	PPE, 20" O.D. x 0.750" W.T., APN SL 352, DSW, COATED W/ 14-16 MILS FUSION BONDED EPDM.
21	4	97-241	GASKET, 20", DWN RING, ANSI 300#, RTJ, SOFT IRON.
22	40	97-242	BOLTS, STD, 7" x 2 1/2", ASTM A193, CLASS 2A, GRADE B7, WITH THREADS ROLLED AFTER HEAT TREATMENT, W/2 HEAVY HEX NUTS, ASTM A193, CLASS 2B, GRADE 2H, COATED WITH ZYAN OR EQUAL.
23	2	97-241	GASKET, 16", DWN RING, ANSI 300#, RTJ, SOFT IRON.
24	40	97-241	BOLTS, STD, 1 3/8" x 1 1/2", ASTM A193, CLASS 2A, GRADE B7, WITH THREADS ROLLED AFTER HEAT TREATMENT, W/2 HEAVY HEX NUTS, ASTM A193, CLASS 2B, GRADE 2H, COATED WITH ZYAN OR EQUAL.
25	1	97-241	GASKET, 12.750", DWN RING, ANSI 300#, RTJ, SOFT IRON.
26	1	97-255	ANCHOR, 410 LBS, ZINC AS PER DRAWING NO. VKGO-F2-527A-2400-1A5.
27	1	97-208	HOT TAP, 20" x 12.750, ANSI 300# SERIES, HYDROSTATIC FULL STRUCTURAL INTEGRITY, SEALS FOR GAS SERVICE, 300# PORTS TO BE PLUGGED WITH STAINLESS STEEL PLUGS. ALL SEALS PORTS RESISTERS ETC. MANUFACTURED TO 10.000 ENERGY SPECIFICATIONS, W/2 2160, (COMPLETE).
28	2	11-274	FLANGE, 16", ANSI 300# RTJ, WN, MSS-SP-44, F30, 8W 16" O.D. x 0.552" W.T. PPE.
29	1	97-227	PPE, 12.750" O.D. x 0.650" W.T., APN SL 352, DSW, COATED WITH 14 TO 16 MILS OF FUSION BONDED EPDM.
30	1	97-273	IN-HEAD-O-LET, 1" NPT x FLAT, 300#, ASTM A165.
31	1	97-278	NUT, PPE, 1.250" O.D. x 0.212" W.T., ASTM A165, GRADE B.
32	1	97-071	VALVE BALL 1" ANSI 300#, WPI x PPE, LEVER OPERATED, API 60 WOODROW WOODROW CAMERON STEEL STANDARD TRM.
33	1	97-291	FLANGE, SWMEL RING, 16" O.D. ANSI 300#, RTJ WN, 8W 16" O.D. x 0.650" W.T. APN SL 352 PPE. MSS-SP-44, F30, COMPLETE WITH STUDS LONG ENOUGH TO USE WITH STUD TENSILER.
34	1	97-274	PLUG, HEX HEAD, 1.125" O.D. 4100#, FORGED STEEL, ASTM A165.

AS-BUILT
DATE MAR 31 1998
PCS# 97079
G18805

DRAWING NO.	TITLE	DATE	REVISIONS
VKGO-F2-527A-2400-1	MAIN PASS BLOCK 281 SUBSEA TIE-OVER PIPING DETAILS	11/17/97	1-01 AS-BUILT

VIOSCA KNOLL GATHERING COMPANY

Drawn By:
Project Consulting Services, Inc.
11208 Woodbridge, Suite 200
Houston, Texas, 77060-2818
(713) 866-7000

DATE	BY	CHKD	DATE
11/17/97	1	1	11/17/97

MAIN PASS BLOCK 281
LINE NO. 527-2400

16" SUBSEA TIE-OVER DETAILS
VKGO-F2-527A-2400-3A