

In Reply Refer To: MS 5232

MAY 05 1998

Mr. M. C. Smith  
Venice Energy Services Company  
935 Gravier Street  
New Orleans, Louisiana 70112

Dear Mr. Smith:

In accordance with 30 CFR 250.158(b), your letter dated March 19, 1998, transmitted a pipeline construction report for the following right-of-way pipeline located in the West Delta Area:

<u>Pipeline Segment No.</u>	<u>Size (inches)</u>	<u>Length (feet)</u>	<u>Service</u>	<u>From</u>	<u>To</u>
11579 (Right-of-Way OCS-G 18827)	12	30,502	Gas/ Condensate	Well No. 1 Block 65 Lease OCS-G 15363	A 26-inch SSTI Block 40 Lease OCS-G 1072 Segment No. 4639

The data provided in the report, including the following test information, establishes the assigned maximum allowable operating pressure (MAOP) for the pipeline:

	<u>Test Pressure (psig)</u>	<u>Duration (hours)</u>	<u>MAOP (psig)</u>	<u>MAOP Determination</u>
Pipeline	2,165	8	1,440	Receiving pipeline
Riser	2,170	4	1,440	Receiving pipeline

The high- and low-pressure sensors shall be set, respectively, no higher than 15 percent above and below the normal operating range. However, the high pilot shall not be set higher than the MAOP of the pipeline.

The total length of the "as-built" pipeline right of way is 5.78 miles.

Sincerely,

(Org. Sgd.) J. R. Hennessey

Donald C. Howard  
Regional Supervisor  
Field Operations

bcc: 1502-01 Segment No. 11579, ROW OCS-G 18827 (MS 5232)  
1502-01 ROW OCS-G 18827 (Microfilm) (MS 5033)  
MS 5232 Carto

FPatton:amm:3/24/98:Venice.579

MS 5033  
Microfilm

Venice Energy Services Company  
935 Gravier St.  
New Orleans, LA 70112  
M. C. Smith  
504-592-6265

March 19, 1998

United States Department of the Interior  
Minerals Management Service  
Gulf of Mexico OCS Region  
1201 Elmwood Park Boulevard  
Harahan, Louisiana 70123-2394

BEST AVAILABLE COPY

Attention: Mr. Frank Patten  
MS5232

Subject: Venice Energy Services Company Installation of a 12-Inch Pipeline from West  
Delta Block 65 to West Delta Block 40, Offshore Louisiana.  
Pipeline Segment Number 11579

ROW OCS-G-18827

Dear Mr. Patten:

Please be advised that Chevron U.S.A. Inc. has completed installation of the following pipeline segment.

<u>Pipeline Segment</u>	<u>Size (In.)</u>	<u>Length (Feet)</u>	<u>Service</u>	<u>From</u>	<u>To</u>
11579	12"	30,502	Gas/ Condensate	WD 65 "A" OCS G-15363	WD 40 SSTI OCS G-01072

Pipeline Segment Number 11579 was hydrotested and placed in service on February 23, 1998. Please find attached the hydrostatic test report, chart, and calibration certificate, an "as-built" plat, and a disk containing digital data for plotting the location of the pipeline.

Please call Mr. Carlos Gonzalez at (504)592-7178 if you have any questions or if we can be of assistance in expediting the approval process.

Sincerely,

VENICE ENERGY SERVICES COMPANY

By M.C. Smith  
Attorney-In-Fact

Attachments



Sub Sea Inc

BEST AVAILABLE COPY

**SAFETY MEETING REPORT**

TOPIC:	(CBI) Hydro Testing	
SUPERVISOR:	RONALD GROS	
LOCATION:	DSE YARD	
CONDUCTED BY:	R. Gros	
DATE:	11/7/97	TIME: 9:45 AM

DETAILS OF DISCUSSION / COMMENTS / SUGGESTIONS

Reviewed & Discussed CBI on Hydro Testing, went over check list for Hydroing and signed off on the list

PRINT NAME	SIGNATURE
1) Casey Falgout	Casey Falgout
2) William Bullard	William Bullard
3) RONALD GROS	Ronald Gros
4) Mike Lewis	M. Lewis
5)	
6)	
7)	
8)	
9)	
10)	



ATTACHMENT "A"  
HYDRO TEST INFORMATION AND SAFETY CHECK LIST

Test No. 1 Company CHEVRON  
Date 11/7/97 Location West of Shop WD 65  
Job No. 97-154-1 Line No./Iso No. (See Attachment "D")  
Test Performed:  DSI Yard  Inshore  Offshore

Person in Charge Ronald Dwo

PERSON IN CHARGE SHALL INITIAL ALL ITEMS BELOW INDICATING THAT THEY HAVE BEEN REVIEWED WITH THE CREW AND ENTIRE CREW SHALL SIGN BELOW.

RG An experienced or qualified person shall remain in charge throughout hydro test operations.

RG Customer expectations clarified prior to beginning work.

RG Use designated hydro area when available.

RG Area Flagged/No non-essential Personnel allowed in area. During simultaneous operations non-essential personnel may be allowed in the test area if their work is not associated with the pressurized system and if it can be performed without presenting hazard to the crew. In addition, approval must be acquired from the customer representative, Dolphin supervisor, and Dolphin management. It is however never acceptable for any personnel to be in the test area during the pressure up phase. Pressure up phase includes a minimum of a 15 minute period after pressure up which allows pressure to stabilize and decreases potential for injury.

RG All connections inspected.

RG All equipment (i.e. pumps, hoses, bleed off valves, gauges, fittings) must meet and/or exceed pressure rating and has been inspected.

RG All required personal protective equipment in use (i.e. chemical gloves, goggles, apron, faceshield, etc.) when chemicals are used and/or as required (i.e. safety glasses, hard hats, safety shoes).

RG All areas have operable bleed off points prior to pressure up.

RG Pump and Recorder set up outside of test area, out of the line of fire.

RG All personnel remain out of the test area during pressure up stages. Including Hydro Crew.

RG Inspection for leaks shall be performed only after pressure up stages and only be designated personnel.

RG Never tamper with or tighten any bolts, fittings, hoses or piping while under pressure or during pressure up stages.

RG Entire Hydro Crew has reviewed and discussed all times above and signify by signing below.

Ronald Dwo \_\_\_\_\_

Carey [Signature] \_\_\_\_\_

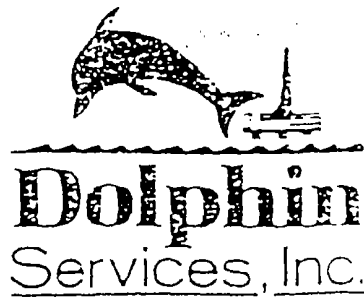
William [Signature] \_\_\_\_\_

\_\_\_\_\_

CRITICAL BEHAVIOR INVENTORY  
(CBI)  
HYDRO TESTING

1. No job is ever so urgent or so important that we can't take the time out to do it safely or environmentally correct.
2. An experienced or qualified person will be put in charge of hydro and should meet with the supervisor in charge of the job prior to test.
3. Customer expectations should be clarified prior to beginning work.
4. Hydro Test checklist shall be used and followed.
5. Area shall be flagged off.
6. Use designated Hydro area when available.
7. No non-essential personnel are to be allowed in the area. During simultaneous operations non essential personnel may be allowed in the test area if their work is not associated with the pressurized system and if it can be performed without presenting a hazard to the crew. In addition, approval must be acquired from the customer representative, Dolphin supervisor, and Dolphin management. It is however never acceptable for any personnel to be in the test area during the pressure up phase. Pressure up phase includes a minimum of a 15 minute period after pressure up which allows pressure to stabilize and decreases potential for injury.
8. Pump and recorder shall be set up outside of the test area out from the line of fire.
9. All personnel shall remain clear during pressure up stages. Including hydro crew.
10. All equipment and connections (i.e. pumps, hoses, bleed off valves, valves flange, gauges, fittings) must meet Pressure rating and should be inspected prior to use.
11. All areas must have bleed off points prior to pressure up.
12. Proper PPE must be used when chemicals are used in the system.
13. Never stand near, tamper with and / or tighten any bolts, fittings, hoses or piping while under pressure or during pressure up stages.
14. Inspection for leaks shall be performed after pressure up and only by designated personnel.
15. Ensure entire system bled down upon completion.
16. No standard will ever exist which can substitute for common sense, sound judgment and a continuing concern for maximum safety. Safety is not a rule book it's a state of mind.

BEST AVAILABLE COPY



Attachment "C"

Hydro Test Monitoring Data

Test No. 7

*R. Brown*

Date	Time	Pressure	Temperature	Dead Wt.	Remarks
11/7/97	1:15	2171	70°	2172	
11/7/97	1:30	2171	68°	2174	Sun went behind the clouds
" "	1:45	2171	70°	2177	
" "	2:00	2173	64°	2185	
" "	2:15	2176	65°	2187	
" "	2:30	2176	64°	2187	
" "	2:45	2176	63°	2184	
" "	3:00	2176	61°	2179	
" "	3:15	2176	60°	2172	
" "	3:30	2173	60°	2172	
" "	3:45	2173	59	2172	
" "	4:00	2173	59	2172	
" "	4:15	2170	58	2171	
" "	4:30	2170	58°	2171	
" "	4:45	2170	58°	2171	
" "	5:00	2170	58°	2171	

Company Rep. <sup>5:15</sup> Michael L. Mich Date \_\_\_\_\_  
 DSI Rep. Ronald Lee Date \_\_\_\_\_  
 ABS Rep. \_\_\_\_\_ Date \_\_\_\_\_

BEST AVAILABLE COPY

# CALIBRATION CERTIFICATE

NO. 11730

MAKE BARTON SERIAL NUMBER 242E-53086

PRESSURE RANGE 0-5,000PSI CALIBRATED TO MANUFACTURER'S SPECIFICATIONS

DATE OF CALIBRATION NOVEMBER 5, 1997 CALIBRATED BY: *Johnny Antill*

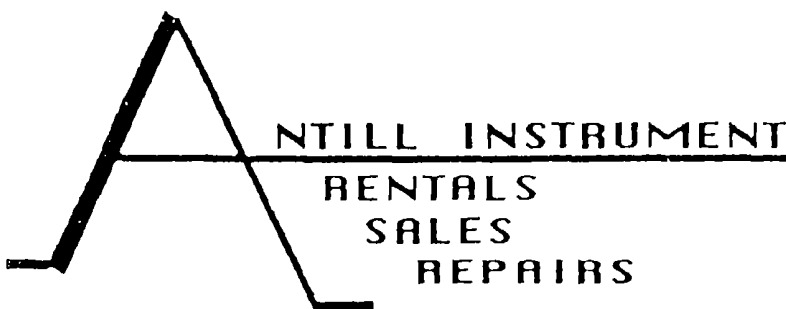
This is to certify that this instrument has been inspected and tested against Pressure Standard Chandler Engineering S/N-16169 traceable to the National Institute of Standards and Technology, traceability reference P-8424 File: TN-258950.

ACCURACY 0.02% TEMP 70°F HUMIDITY 62%

4446 SOUTHDOWN MANDALAY

HOUMA, LA 70360

TELEPHONE: 584/876-1695



BEST AVAILABLE COPY



# CALIBRATION CERTIFICATE

NO. 11731

MAKE BARTON

SERIAL NUMBER 265-111491

TEMPERATURE RANGE 0-150°F

CALIBRATED TO MANUFACTURER'S SPECIFICATIONS

DATE OF CALIBRATION NOVEMBER 5, 1997

INSPECTOR *Jerry Antill*

**A**  
**NTILL INSTRUMENT**  
**RENTAL**  
**SALES, REPAIRS**

4446 SOUTHDOWN MANDALAY  
HOUMA, LA 70360  
TELEPHONE: 504/876-1695  
HOME: 504/851-6189

BEST AVAILABLE COPY

# CALIBRATION CERTIFICATE

NO. 11732

MAKE GAUGE 2 SERIAL NUMBER 53545-2

PRESSURE RANGE 0-5,000PSI CALIBRATED TO MANUFACTURER'S SPECIFICATIONS

DATE OF CALIBRATION NOVEMBER 5, 1997 CALIBRATED BY: Jerry Antill

This is to certify that this instrument has been inspected and tested against Pressure Standard Chandler Engineering S/N-16169 traceable to the National Institute of Standards and Technology, traceability reference P-8424 File: TN-258958

ACCURACY 0.02% TEMP 70°F HUMIDITY 62%

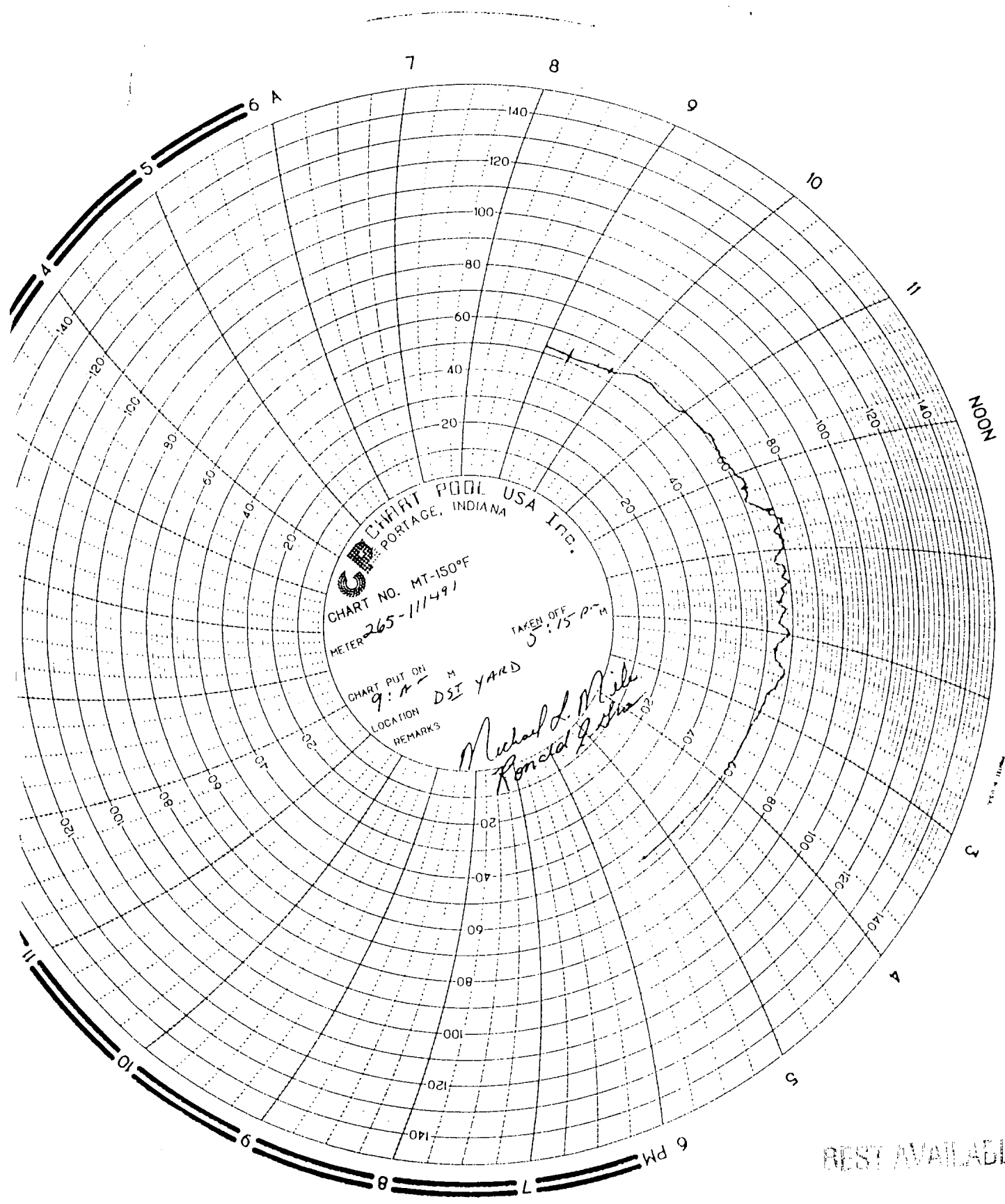
4446 SOUTHDOWN MANDALAY

HOUMA, LA 70360

TELEPHONE: 504/876-1695



BEST AVAILABLE COPY




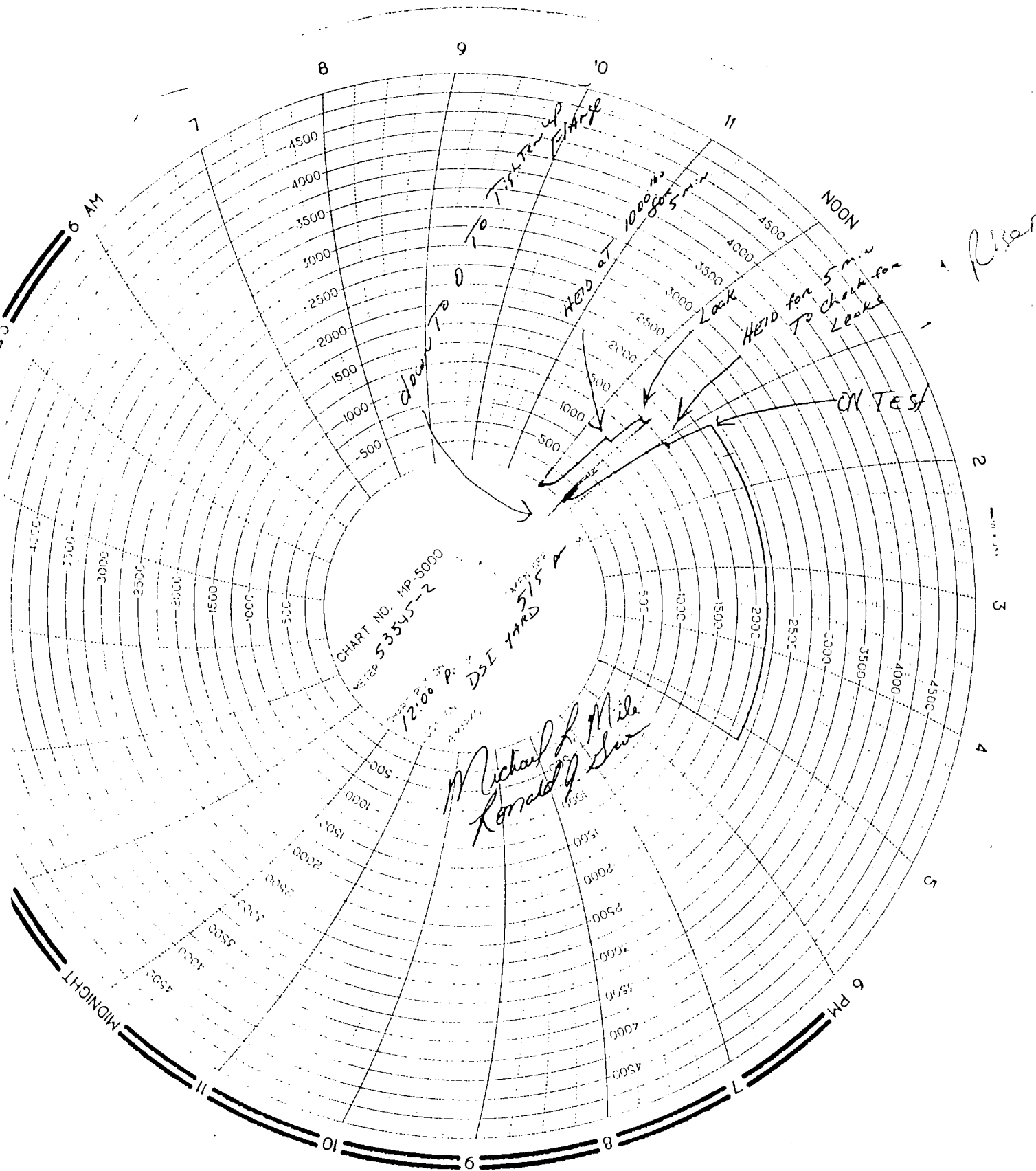

**CHART POOL USA INC.**  
 PORTAGE, INDIANA  
 CHART NO. MT-150°F  
 METER 265-111491

CHART PUT ON M  
 9: A  
 LOCATION DSI YARD  
 REMARKS

TAKEN OFF  
 5:15 P.M.

*Michael L. Mehl*  
*Ronald J. Fisher*

BEST AVAILABLE COPY



## PIPE LINES UNLIMITED SERVICES

Pipeline

Deadweight Test and Temperature Data

BEST AVAILABLE COPY

Project: 12" W.D. 40 TO W.D. 65

Extent of Test: From 1630 To 0030

Pipe Specifications: 12" O.D. X W.T., Grade

Length of Line Tested: 5 mi.

No.	Time	Dead Weight	Pressure	Temperature	
				Fluid	Ambient
1.	07:00	pressurizing			
2.	09:30	1675			
3.	09:55	pumping up			
4.	10:15		2125		
5.	11:05		2125		
6.	11:05	Bled down			
7.	12:15				
8.	12:50	542	542	54	54
9.	13:05	545	545	60	56
10.	13:05	pumping up	TO TEST		
11.	16:25	2165	2165	76	56
12.	17:00	2165	2165	72	56
13.	17:30	2165	2165	72	54
14.	18:00	2165	2165	70	54
15.	18:30	2165	2165	70	54
16.	19:00	2165	2165	70	54
17.	19:30	2165	2165	70	54
18.	20:30	2167	2167	68	54

BEST AVAILABLE COPY

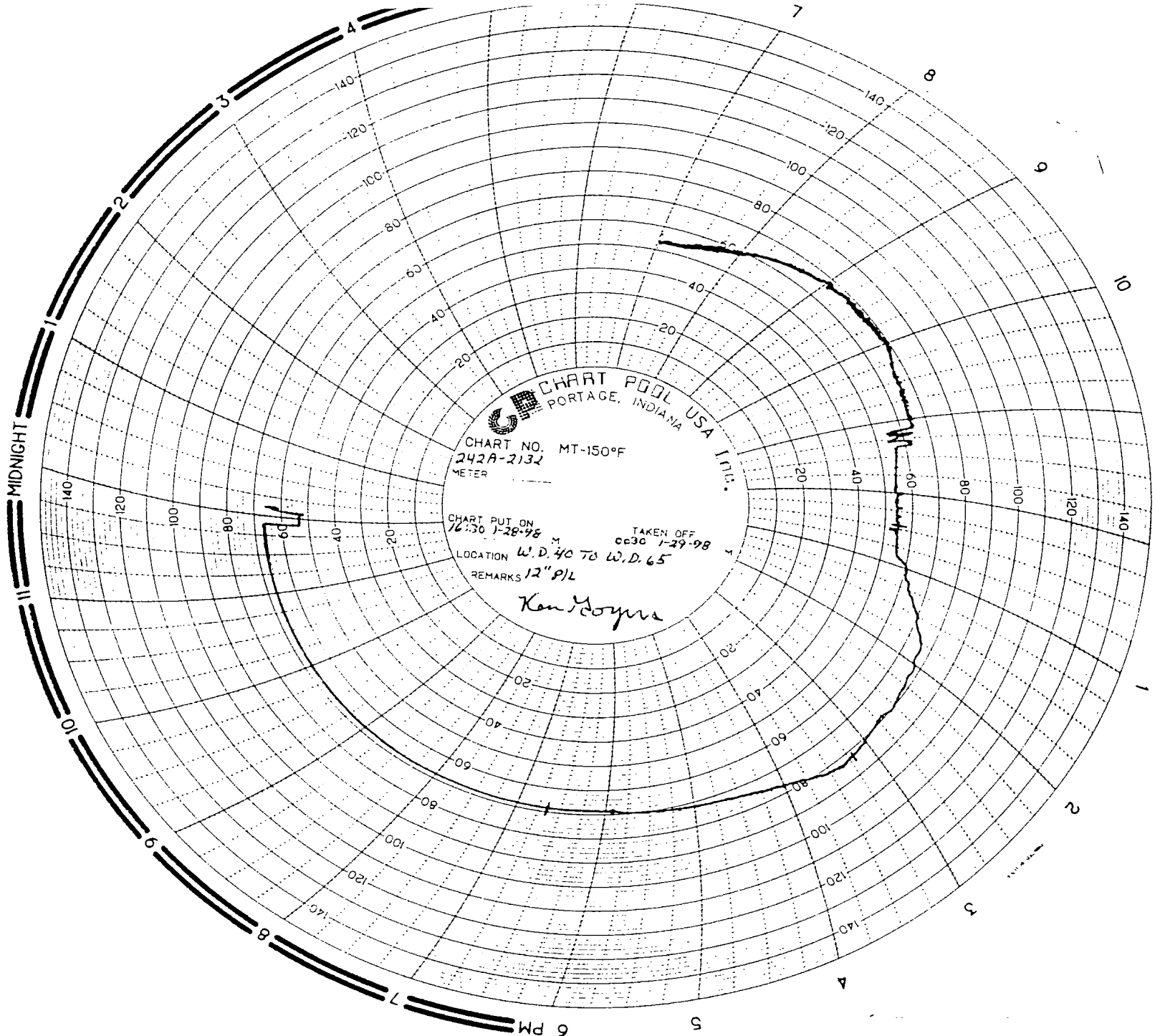


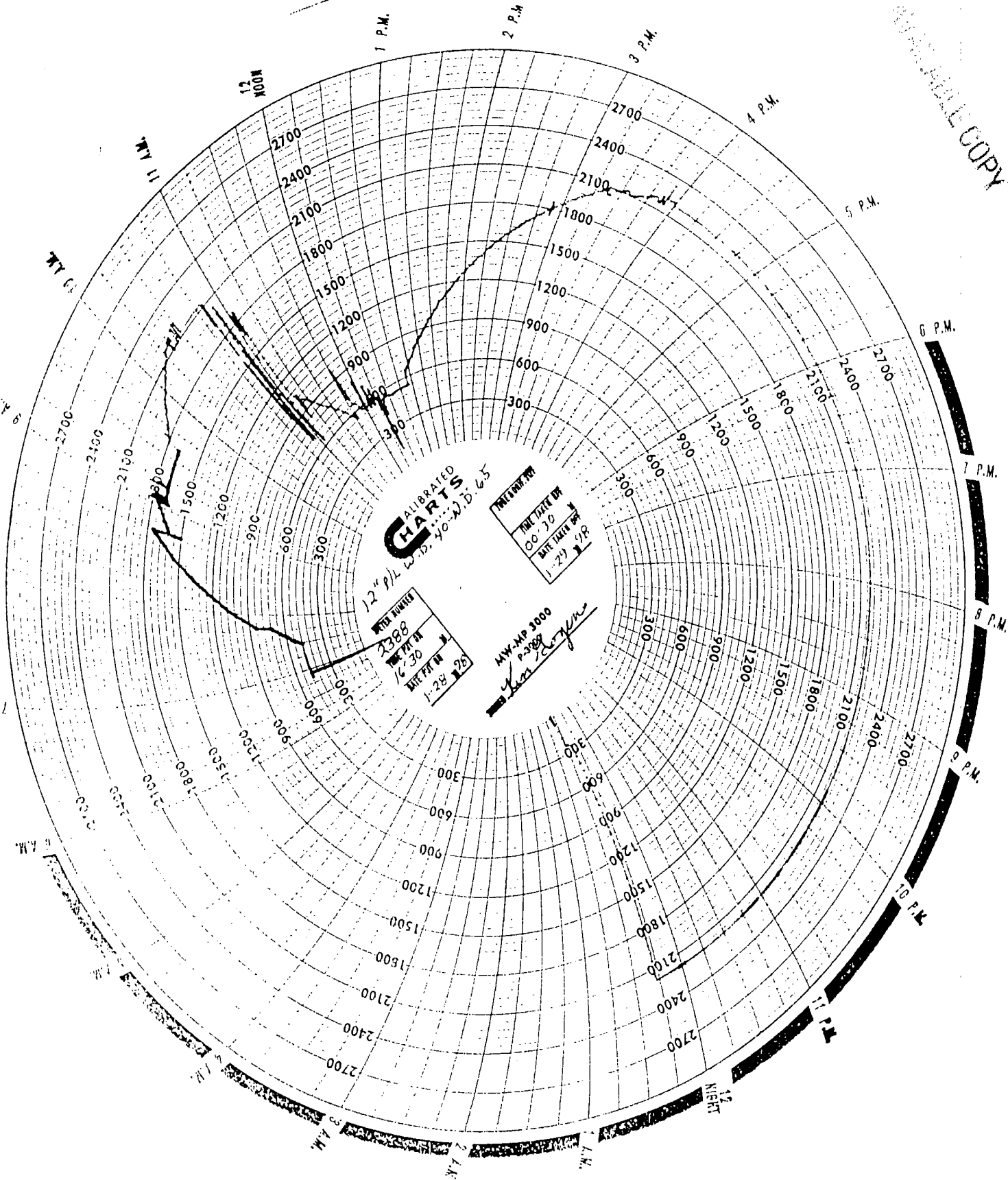
CHART POOL USA 1111  
THE PORTAGE, INDIANA  
CHART NO. MT-150°F  
242A-2132  
METER

CHART PUT ON 12:30 1-28-98  
TAKEN OFF 0630 1-29-98  
LOCATION W.D. 40 TO W.D. 65  
REMARKS 12" P/L

*Ken Boyers*

BEST AVAILABLE COPY

BEST AVAILABLE COPY



**CALIBRATED CHARTS**  
12" 9/16 W.D. 40-1) D. 6.5

TIME	DATE
00 30	1-28-28

TIME	DATE
00 30	1-28-28

WV-MP 3000  
2388  
*[Signature]*

# CHEVRON 12 " HYDROTEST PIPELINE PROCEDURE

- A) PRESSURE ON THE LINE WILL BE RAISED 80% OF THE TEST PRESSURE AND ALLOWED TO STABILIZE. (1728 psi)
- B) PRESSURE SHALL THEN BE RAISED TO THE SPECIFIED TEST PRESSURE (2160 psi) AND MAINTAINED FOR 15 MINUTES.
- C) PRESSURE WILL THEN BE LOWERED TO 25% OF SPECIFIED TEST PRESSURE FOR 15 MINUTES. (540 psi)
- D) PRESSURE WILL THEN BE RAISED TO 80% OF THE TEST PRESSURE, ALLOWED TO STABILIZE, AND THEN RAISED TO 2185 psi MAXIMUM. TEST PRESSURE WILL BE HELD FOR 8 HOURS.
- E) READINGS WILL BE TAKEN EVERY 15 MINUTES FOR FIRST 2 HOURS THEN EVERY HALF AN HOUR.

*A) LAST 4 HR No Lost in P.S. I.*

GLOBAL INDUSTRIES OFFSHORE, INC.  
VESSEL: GP-37

BEST AVAILABLE COPY



# CALIBRATION CERTIFICATE

NO. 18159

MAKE BARTON

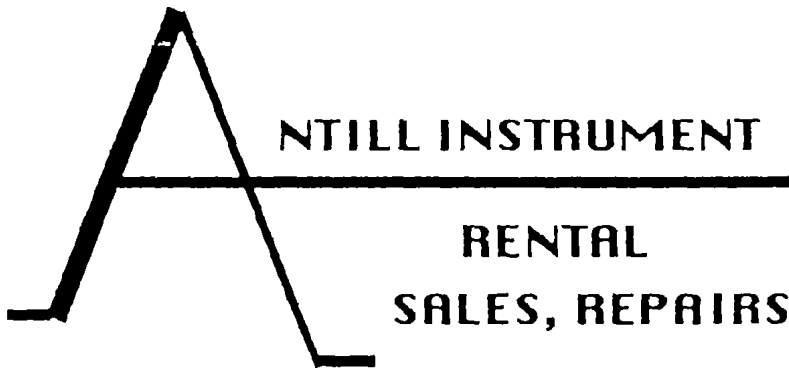
SERIAL NUMBER 242A-2132

TEMPERATURE RANGE 0-150°F.

CALIBRATED TO MANUFACTURER'S SPECIFICATIONS

DATE OF CALIBRATION JANUARY 26, 1998

INSPECTOR *Johny Antik*



4446 SOUTHDOWN MANDALAY  
HOUMA, LA 70360  
TELEPHONE: 504/876-1695  
HOME: [REDACTED]

BEST AVAILABLE COPY

# CALIBRATION CERTIFICATE

NO. 18156

MAKE MOCK SERIAL NUMBER 2388

PRESSURE RANGE 0-3,000 PSI CALIBRATED TO MANUFACTURER'S SPECIFICATIONS

DATE OF CALIBRATION JANUARY 26, 1998 CALIBRATED BY: *Johnny Antel*

This is to certify that this instrument has been inspected and tested against Pressure Standard Chandler Engineering S/N-16169 traceable to the National Institute of Standards and Technology, traceability reference P-8424 File: TN-250950.

ACCURACY 0.02% TEMP 70°F. HUMIDITY 76%

4446 SOUTHDOWN MANDALAY

HOUMA, LA 70360

TELEPHONE: 504/876-1695



BEST AVAILABLE COPY

# CALIBRATION CERTIFICATE

NO. 18160

MAKE CHANDLER ENGINEERING SERIAL NUMBER 23140

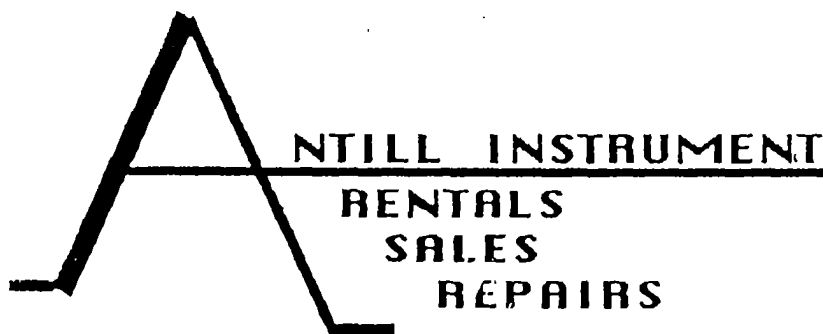
PRESSURE RANGE 50-3,000 PSI CALIBRATED TO MANUFACTURER'S SPECIFICATIONS

DATE OF CALIBRATION JANUARY 26, 1998 RECALIBRATION DUE -----

This is to certify that this instrument has been inspected and floated against Pressure Standard Chandler Engineering S/N 16169 traceable to the National Institute of Standards and Technology, traceability reference P-8424 File:TN-258958.

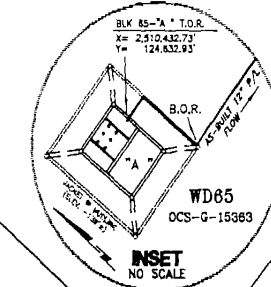
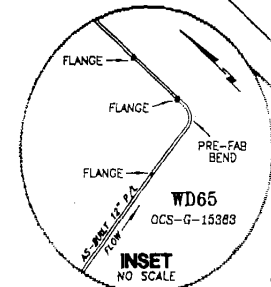
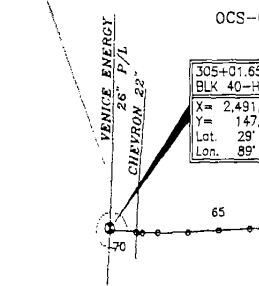
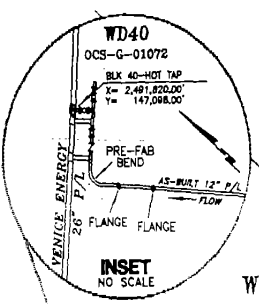
ACCURACY 0.02% TEMP 70°F. HUMIDITY 76%

CALIBRATED BY *Johnny Arlett*



4446 SOUTHDOWN MANDALAY  
HOUMA, LA 70360  
TELEPHONE: 504/876-1695  
HOME: ~~XXXXXXXXXX~~

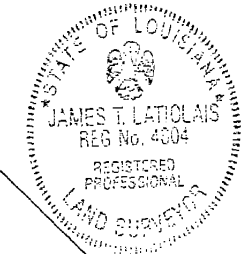
BEST AVAILABLE COPY



TIE	X COORDINATE	Y COORDINATE	TIE	X COORDINATE	Y COORDINATE
PK 85 T.O.R.	2,510,433'	124,633'	39 *	2,501,374'	136,249'
PK 85 B.O.R.	2,510,457'	124,579'	40 *	2,501,040'	136,617'
FLANGE	2,510,915'	124,591'	41 *	2,500,699'	136,980'
PRE-FAB BEND	2,510,942'	124,591'	42 *	2,500,363'	137,344'
SWING FLANGE	2,510,942'	124,600'	43 *	2,500,035'	137,712'
SWING FLANGE	2,510,942'	124,623'	44 *	2,499,700'	138,073'
7 *	2,510,992'	125,020'	45 *	2,499,369'	138,439'
8 *	2,510,997'	125,276'	46 *	2,499,053'	138,781'
9 *	2,510,924'	125,525'	47 *	2,498,713'	139,153'
10 *	2,510,850'	125,771'	48 *	2,498,378'	139,526'
11 *	2,510,634'	126,075'	49 *	2,498,043'	139,898'
12 *	2,510,365'	126,375'	50 *	2,497,683'	140,267'
13 *	2,510,031'	126,745'	51 *	2,497,383'	140,625'
14 *	2,509,669'	127,135'	52 *	2,497,043'	140,997'
15 *	2,509,334'	127,502'	53 *	2,496,719'	141,343'
16 *	2,508,978'	127,898'	54 *	2,496,388'	141,709'
17 *	2,508,675'	128,230'	55 *	2,496,049'	142,070'
18 *	2,508,342'	128,606'	56 *	2,495,723'	142,436'
19 *	2,508,016'	128,964'	57 *	2,495,357'	142,832'
20 *	2,507,675'	129,327'	58 *	2,495,055'	143,168'
21 *	2,507,350'	129,680'	59 *	2,494,725'	143,536'
22 *	2,507,009'	130,059'	60 *	2,494,389'	143,892'
23 *	2,506,682'	130,424'	61 *	2,494,060'	144,272'
24 *	2,506,021'	131,139'	62 *	2,493,732'	144,637'
25 *	2,505,692'	131,508'	63 *	2,493,391'	144,989'
26 *	2,505,354'	131,880'	64 *	2,493,065'	145,356'
27 *	2,505,028'	132,239'	65 *	2,492,731'	145,722'
28 *	2,504,687'	132,600'	66 *	2,492,393'	146,083'
29 *	2,504,357'	132,961'	67 *	2,492,072'	146,454'
30 *	2,504,030'	133,327'	68 *	2,491,914'	146,648'
31 *	2,503,703'	133,703'	SPRONG	2,491,857'	146,727'
32 *	2,503,365'	134,058'	FLANGE	2,491,819'	147,055'
33 *	2,503,032'	134,416'	FLANGE	2,491,611'	147,066'
34 *	2,502,701'	134,782'	PRE-FAB BEND	2,491,604'	147,076'
CHEVRON 10" T.O.R.	2,502,517'	134,986'	TEE	2,491,625'	147,092'
36 *	2,502,374'	135,148'	BLK 40 HOT TAP	2,491,820'	147,098'
37 *	2,502,035'	135,513'			
38 *	2,501,700'	135,876'			

TOTAL LENGTH=30,502'=5.78 MILES

NOT AVAILABLE COPY



CERTIFIED CORRECT AS TO HORIZONTAL POSITION OF AS-BUILT PIPELINE.

*James T. Latiolais*

REG. PROFESSIONAL LAND SURVEYOR NO. 4804  
STATE OF LOUISIANA

**Chevron**  
Chevron U.S.A. Inc.

**JOHN E. CHANCE & ASSOCIATES, INC.**  
FUGRO  
CIVIL ENGINEERS & LAND SURVEYORS - LAFAYETTE, LOUISIANA  
A MEMBER OF THE FUGRO GROUP OF COMPANIES

0 2000'  
SCALE IN FEET

GEODETIC DATUM: NAD 1927  
ELLIPSOID: CLARKE 1866  
PROJECTION: LAMBERT  
ZONE: LOUISIANA SOUTH  
GRID UNITS: FEET

**AS-BUILT  
12" GAS/CONDENSATE PIPELINE**  
BLK 65-"A" TOR TO BLK 40-HOT TAP  
WEST DELTA AREA  
GULF OF MEXICO

JOB NO.: 97-2808    DATE: FEBRUARY 10, 1998    SHEET NO.  
FILE: H:\MARINE\972808    PRINT: FEBRUARY 10, 1998    1 OF 1

- NOTES:
- 1) LENGTH OF RISERS NOT INCLUDED IN TOTAL FOOTAGE AND STATIONING OF AS-BUILT PIPELINE.
  - 2) T.O.R. REPRESENTS TOP OF RISER.  
B.O.R. REPRESENTS BOTTOM OF RISER.
  - 3) DETAIL INSET TAKEN FROM CONSTRUCTION DRAWINGS.
  - 4) \* DENOTES ANODE POSITION AS SURVEYED (MAY NOT REFLECT ALL ANODES).