

G-18835

In Reply Refer To: MS 5232

APR 24 1998

Mr. J. C. McDowell
Chevron U.S.A. Inc.
935 Gravier Street
New Orleans, Louisiana 70112

Dear Mr. McDowell:

In accordance with 30 CFR 250.158(b), your letter dated March 25, 1998, transmitted a pipeline construction report for the following right-of-way pipeline located in the South Timbalier Area:

<u>Pipeline Segment No.</u>	<u>Size (inches)</u>	<u>Length (feet)</u>	<u>Service</u>	<u>From</u>	<u>To</u>
11595 (Right-of-Way OCS-G 18835)	12	47,786	Bulk Gas	Platform A Block 148 Lease OCS-G 1960	PROD II Block 151 Lease OCS 0463

The data provided in the report, including the following test information establishes the assigned maximum allowable operating pressure (MAOP) for the pipeline:

<u>Pipeline Segment No.</u>	<u>Test Pressure (psig)</u>	<u>Duration (hours)</u>	<u>MAOP (psig)</u>	<u>MAOP Determination</u>
11595	2,603	8	2,082	Hydrostatic Pressure Test

The high- and low-pressure sensors shall be set, respectively, no higher than 15 percent above and below the normal operating range. However, the high pilot shall not be set higher than the MAOP of the pipeline.

The total length of the "as-built" pipeline right-of-way is 9.05 miles.

Sincerely,

(Org. Sgd.) J. R. Hennessey

Donald C. Howard
Regional Supervisor
Field Operations

bcc: 1502-01 Segment No. 11595, ROW OCS-G 18835 (MS 5232)
 { 1502-01 ROW OCS-G 18835 (Microfilm) (MS 5033)
 MS 5421
 MS 5232 Carto

JGuidry:amm:4/2/98:Chevron.595

March 25, 1998



Chevron U.S.A. Production Company
Mid-Shelf Profit Center
935 Gravier Street
New Orleans, LA 70112

Pipeline Completion Report
Segment # 11595
12" Bulk Gas Pipeline
ST 148 "A" to ST 151 Prod 2

Microfilm

U. S. Department of the Interior
Minerals Management Service
Gulf of Mexico OCS Region
1201 Elmwood Park Blvd.
New Orleans, LA 70123-2394

Attention: Office of Pipeline Operations
Pipeline Section

Gentlemen:

Chevron U.S.A. Production Company hereby submits for your files the hydrostatic test report and the as-built schematic for the newly installed 12" Bulk Gas pipeline. Pipeline construction was started in November 1997 and completed February 1997. The date of first operation was 3/1/98.

If you should have any questions or require additional information concerning this submittal please call Ginger Smith at 592-6087 or Maureen Bodron at 592-6324.

Respectfully,

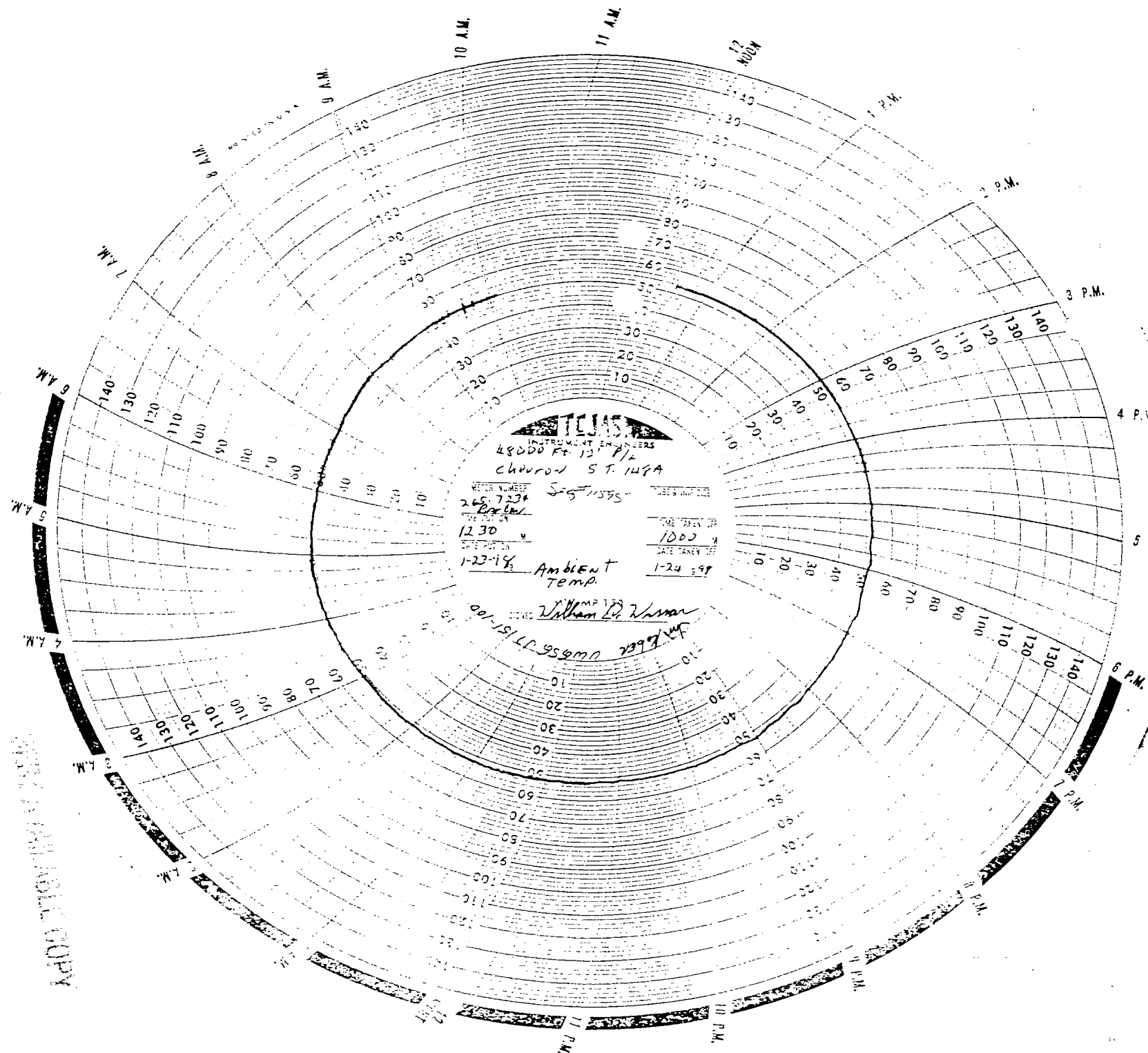
Ginger Smith

for

J. C. McDowell
Facilities Engineering Advisor

Attachments





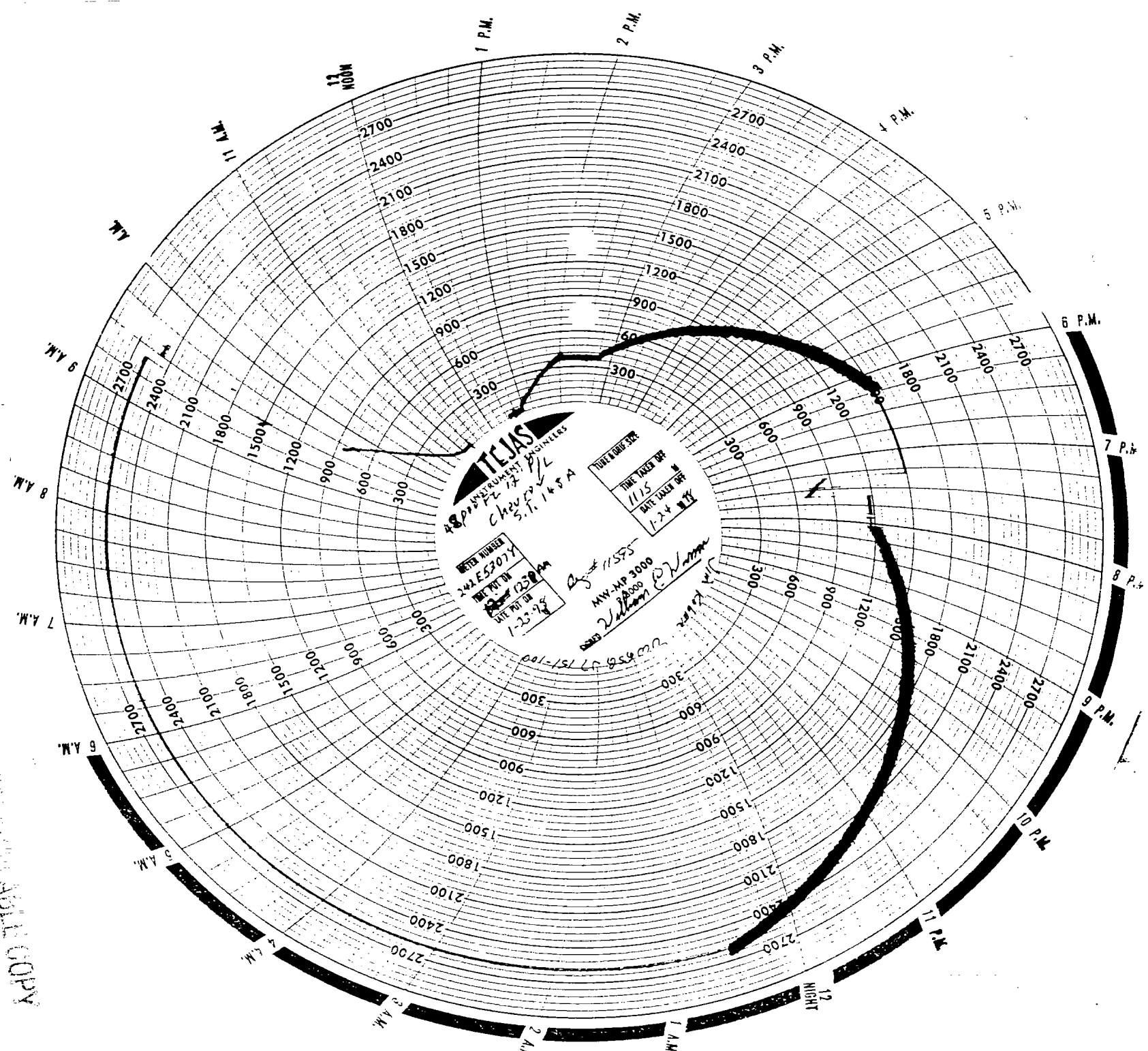
TEXAS
 INSTRUMENT ENGINEERS
 48000 Ft 12th St
 Chevron St. 149A

WET BULB NUMBER	5571595	WET BULB RANGE	
DRY BULB NUMBER	267234	DRY BULB RANGE	
DATE TAKEN	1-22-18	TIME TAKEN	1000
TIME TAKEN	1230	DATE TAKEN	1-24-18

Ambient Temp.

William D. Korman
 001-1511-6590
 209744

2018 JAN 24 10:00 AM



TEXAS
ELECTRICAL ENGINEERS

WATER NUMBER	4894
TIME TAKEN FOR	11:15
METER NO.	2421 E52074
DATE TAKEN FOR	7-24-47
NAME	Cherry L
TIME	8:15 A
NO.	151-100
BY	Wm J. ...

WY-MAP 3000

THIS REPRODUCIBLE COPY

CALIBRATION CERTIFICATE

NO. 1888

MAKE MOCK SERIAL NUMBER MFG-2833

PRESSURE RANGE 0-3,000 PSI CALIBRATED TO MANUFACTURER'S SPECIFICATIONS

DATE OF CALIBRATION JAN. 16, 1998 CALIBRATED BY: John Antell, Jr.

This is to certify that this instrument has been inspected and tested against Pressure Standard Chandler Engineering S/N-16169 traceable to the National Institute of Standards and Technology, traceability reference P-8424 File: TN-250950.

ACCURACY 0.02% TEMP 68°F HUMIDITY 64%

4446 SOUTHDOWN MANDALAY

HOUMA, LA 70360

TELEPHONE: 504/876-1695



BEST AVAILABLE COPY

CALIBRATION CERTIFICATE

NO. 1889

MAKE BARTON SERIAL NUMBER 242E-53078

PRESSURE RANGE 0-3,000 PSI CALIBRATED TO MANUFACTURER'S SPECIFICATIONS

DATE OF CALIBRATION JAN. 16, 1998 CALIBRATED BY: John Antell, Jr.

This is to certify that this instrument has been inspected and tested against Pressure Standard Chandler Engineering S/N-16169 traceable to the National Institute of Standards and Technology, traceability reference P-8424 File: TN-250950.

ACCURACY 0.02% TEMP 68°F HUMIDITY 64%

4446 SOUTHDOWN MANDALAY

HOUMA, LA 70360

TELEPHONE: 504/876-1695



CALIBRATION CERTIFICATE

NO. 1889

MAKE BARTON

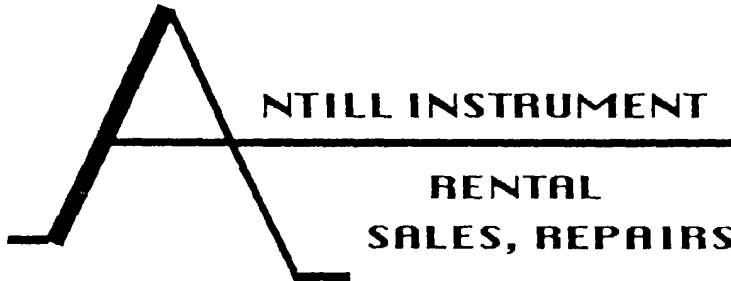
SERIAL NUMBER 265-111491

TEMPERATURE RANGE 0-150°F

CALIBRATED TO MANUFACTURER'S SPECIFICATIONS

DATE OF CALIBRATION JAN. 16, 1998

INSPECTOR John Antill, Jr.



4446 SOUTHDOWN MANDALAY
HOUMA, LA 70360
TELEPHONE: 504/876-1695
HOME: 504/851-6189

BEST AVAILABLE COPY

CALIBRATION CERTIFICATE

NO. 1889

MAKE BARTON

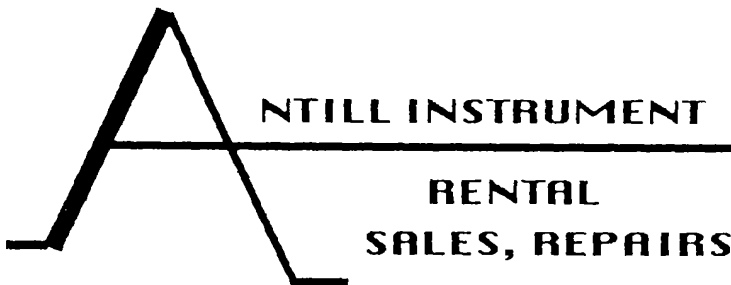
SERIAL NUMBER 265-7234

TEMPERATURE RANGE 0-150°F

CALIBRATED TO MANUFACTURER'S SPECIFICATIONS

DATE OF CALIBRATION JAN. 16, 1998

INSPECTOR John Antill, Jr.



4446 SOUTHDOWN MANDALAY
HOUMA, LA 70360
TELEPHONE: 504/876-1695
HOME: 504/851-6189

CALIBRATION CERTIFICATE

NO. 1891

MAKE CHANDLER ENGINEERING SERIAL NUMBER 20603
PRESSURE RANGE 50-3,000 PSI CALIBRATED TO MANUFACTURER'S SPECIFICATIONS
DATE OF CALIBRATION JAN. 16, 1998 RECALIBRATION DUE _____

This is to certify that this instrument has been inspected and floated against Pressure Standard Chandler Engineering S/N 16169 traceable to the National Institute of Standards and Technology, traceability reference P-8424 File:TN-250950.

ACCURACY 0.02% TEMP 68°F HUMIDITY 64%
CALIBRATED BY John Smith



4446 SOUTHDOWN MANDALAY
HOUMA, LA. 70360
TELEPHONE: 504/876-1695
HOME: 504/851-6189

BEST AVAILABLE COPY

CALIBRATION CERTIFICATE

NO. 1892

MAKE CHANDLER ENGINEERING SERIAL NUMBER 17639
PRESSURE RANGE 50-3,000 PSI CALIBRATED TO MANUFACTURER'S SPECIFICATIONS
DATE OF CALIBRATION JAN. 16, 1998 RECALIBRATION DUE _____

This is to certify that this instrument has been inspected and floated against Pressure Standard Chandler Engineering S/N 16169 traceable to the National Institute of Standards and Technology, traceability reference P-8424 File:TN-250950.

ACCURACY 0.02% TEMP 68°F HUMIDITY 64%
CALIBRATED BY John Smith



4446 SOUTHDOWN MANDALAY
HOUMA, LA 70360
TELEPHONE: 504/876-1695
HOME: 504/851-6189

PIPE LINES UNLIMITED SERVICES

Deadweight Test and Temperature Data

Project: Chevron 12" P/L Seg # 11595
 Extent of Test: From _____ To _____
 Pipe Specifications: _____ O.D. X _____ W.T.; Grade _____
 Length of Line Tested: 47, 358 Ft. From S.T. 148-A to S.T. 151

No.	Time	Dead Weight	Pressure	Temperature	
				Fluid	Ambient
1.	0415	2604	2604		51
2.	0430	2604	2604		51
3.	0445	2604	2604		51
4.	0500	2604	2604		50
5.	0515	2604	2604		50
6.	0530	2604	2604		50
7.	0545	2603	2603		50
8.	0600	2603	2603		50
9.	0615	2603	2603		49
10.	0630	2603	2603		49
11.	0645	2603	2603		49
12.	0700	2603	2603		49
13.	0715	2603	2603		49
14.	0730	2603	2603		49
15.	0745	2603	2603		50
16.	0800	2603	2603		50
17.	0815	2603	2603		50
18.	0830	2603	2603		50
19.	0845	2603	2603		50
20.	0900	2603	2603		50
21.	0915	2603	2603		50
22.	0922	Bleeding down			50
23.					
24.					
25.					

Test Started: Time 0038 Date 1-24-98
 Test Completed: Time 0915 Date 1-24-98

Testing Equipment:

Deadweight Tester: Make Chandler Serial No. 17639
 Pressure Recorder: Make Barton Serial No. 242 E53078
 Temperature Recorder: Make Barton Serial No. 265-111491
 Ambient Barton 265-7234

Recorded By: William E. Vann 1-24-98
 Inspector: Jim Kahan
 Witnesses: _____

PIPE LINES UNLIMITED SERVICES

Deadweight Test and Temperature Data

BEST AVAILABLE COPY

Project: CHEVRON 12" P/L

Extent of Test: From _____ To _____

Pipe Specifications: 12" P/L O.D. X _____ W.T.; Grade _____

Length of Line Tested: 47,358 From 148A - 151 S.T

1-23-98

1-24-98

No.	Time	Dead Weight	Pressure	Fluid	Temperature Ambient
1.	1245	Start Parsing live			
2.	1300	Start Pressing up to 1500#			
3.	1400	Stopped to tighten flange on 151 add. leaking @ 300 PSI			
4.	1445	Pumping again			
5.	1477	1507	1507		52
6.	1405	1507	1507		
7.	1420	1507	1507		
8.	1431	Bleeding down			
9.	1442	1179	1179		
10.	2000	Pumping up to test 2600#			
11.	2035	2607	2607	80°	52°
12.	0045	2607	2607	80°	52°
13.	0100	2607	2607		52°
14.	0115	2606	2606		52°
15.	0130	2606	2606		52°
16.	0145	2606	2606		52°
17.	0200	2606	2606		52°
18.	0215	2606	2606		52°
19.	0230	2606	2606		51°
20.	0245	2606	2606		51°
21.	0300	2605	2605		51°
22.	0315	2605	2605		51°
23.	0330	2605	2605		51°
24.	0345	2605	2605		51°
25.	0400	2604	2604	55°	51°

Test Started: Time 0038

Date 1-24-98

Test Completed: Time 0915

Date 1-24-98

Testing Equipment:

Deadweight Tester: Make Chandler

Serial No. 17639

Pressure Recorder: Make Barton

Serial No. 242E53078

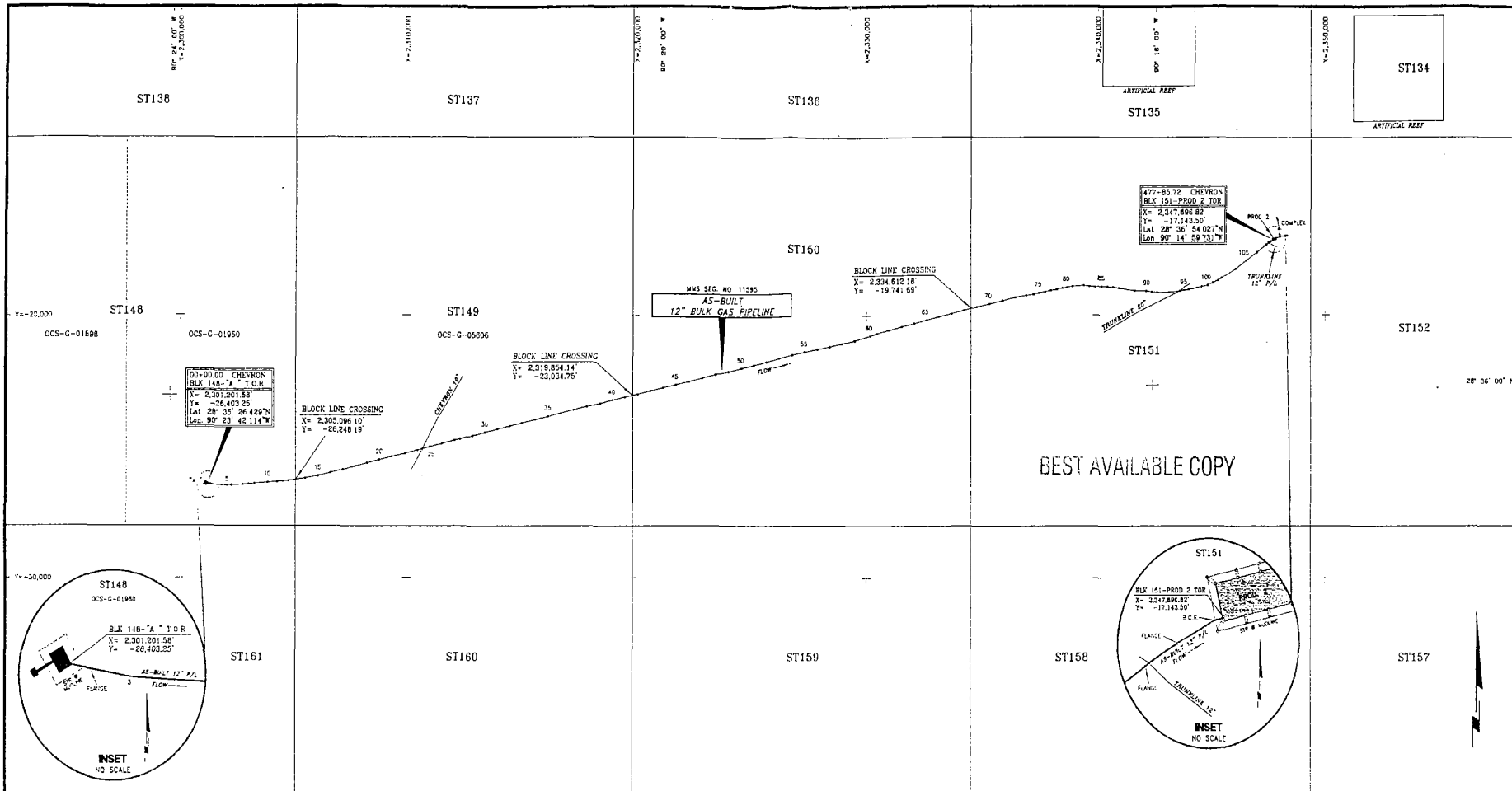
Temperature Recorder: Make Barton
Ambient Barton

Serial No. 265-111491
265-7234

Recorded By: William P. Kinnon 1-24-98

Inspector: Jim Kinnon

Witnesses: _____



COORDINATE TABLE

TIE #	X COORDINATE	Y COORDINATE	TIE #	X COORDINATE	Y COORDINATE	TIE #	X COORDINATE	Y COORDINATE	TIE #	X COORDINATE	Y COORDINATE	TIE #	X COORDINATE	Y COORDINATE	TIE #	X COORDINATE	Y COORDINATE
1	2,301,202	-26,400	27	2,312,098	-24,755	53	2,322,170	-21,654	79	2,332,512	-18,971	105	2,342,524	-17,921			
2	2,301,244	-26,411	28	2,312,351	-24,766	54	2,322,723	-21,569	80	2,332,765	-18,938	106	2,342,983	-17,814			
3	2,301,337	-26,427	29	2,312,902	-24,556	55	2,323,280	-21,377	81	2,333,292	-18,907	107	2,343,715	-17,510			
4	2,301,432	-26,456	30	2,313,448	-24,457	56	2,323,827	-21,268	82	2,333,824	-18,871	FLANGE	2,343,534	-17,255			
5	2,302,006	-26,459	31	2,314,006	-24,334	57	2,324,386	-21,173	83	2,334,365	-18,698	FLANGE	2,347,532	-17,229			
6	2,302,272	-26,460	32	2,314,559	-24,211	58	2,324,955	-21,068	84	2,334,900	-18,624	FLANGE	2,347,581	-17,192			
7	2,302,766	-26,451	33	2,315,109	-24,090	59	2,325,484	-20,942	85	2,335,436	-18,913	FLANGE	2,347,673	-17,133			
8	2,303,015	-26,414	34	2,315,655	-23,973	60	2,326,163	-20,763	86	2,336,111	-18,612	FLANGE	2,347,697	-17,144			
9	2,303,265	-26,395	35	2,316,216	-23,844	61	2,326,451	-20,672	87	2,336,662	-18,934	TOTAL LENGTH=47,786=9.05 MILES					
10	2,303,541	-26,349	36	2,316,768	-23,722	62	2,327,014	-20,548	88	2,337,206	-18,981						
11	2,303,262	-26,321	37	2,317,321	-23,595	63	2,327,559	-20,429	89	2,337,765	-18,970						
12	2,303,512	-26,306	38	2,317,874	-23,474	64	2,328,111	-20,306	90	2,338,321	-18,986						
13	2,303,762	-26,280	39	2,318,432	-23,354	65	2,328,657	-20,179	91	2,338,879	-18,911						
14	2,305,499	-26,194	40	2,319,072	-23,227	66	2,329,210	-20,056	92	2,339,425	-18,136						
15	2,306,064	-26,108	41	2,319,521	-23,109	67	2,329,758	-19,935	93	2,339,965	-18,981						
16	2,306,625	-25,967	42	2,320,069	-22,987	68	2,330,306	-19,813	94	2,340,569	-18,092						
17	2,307,173	-25,863	43	2,320,615	-22,862	69	2,330,853	-19,696	95	2,341,234	-18,077						
18	2,307,716	-25,737	44	2,321,163	-22,742	70	2,331,402	-19,584	96	2,341,939	-18,050						
19	2,308,283	-25,618	45	2,321,714	-22,621	71	2,331,950	-19,449	97	2,342,417	-18,008						
20	2,308,815	-25,494	46	2,322,263	-22,500	72	2,332,497	-19,322	98	2,342,909	-18,967						
21	2,309,384	-25,374	47	2,322,862	-22,365	73	2,333,065	-19,248	99	2,343,431	-18,927						
22	2,309,919	-25,253	48	2,323,410	-22,233	74	2,333,283	-19,295	100	2,344,799	-18,878						
23	2,310,488	-25,129	49	2,323,967	-22,118	75	2,333,509	-19,144	101	2,345,098	-18,779						
24	2,310,676	-25,082	50	2,324,517	-21,999	76	2,333,772	-19,108	102	2,345,272	-18,680						
25	2,311,007	-25,003	51	2,325,064	-21,878	77	2,334,018	-19,059	103	2,345,431	-18,589						
26	2,311,056	-24,882	52	2,325,619	-21,751	78	2,334,287	-19,022	104	2,346,000	-18,539						

NOTES & CERTIFICATION

NOTES:
 1) LENGTH OF RISERS NOT INCLUDED IN TOTAL FOOTAGE AND STATIONING OF AS-BUILT PIPELINE.
 2) PREPARED FOR GLOBAL INDUSTRIES COASTAL DIVISION.
 3) "C.R." REPRESENTS TOP OF RISER. "B.O.R." REPRESENTS BOTTOM OF RISER.
 4) DETAIL INSET TAKEN FROM CONSTRUCTION DRAWINGS.
 5) "DENOTES" AND/OR POSITION AS SURVEYED (MAY NOT REFLECT ALL ANGLE(S)).

CERTIFIED CORRECT AS TO HORIZONTAL POSITION OF AS-BUILT PIPELINE.
James L. Latouais
 REG. PROFESSIONAL LAND SURVEYOR NO. 4824
 STATE OF LOUISIANA

GEODETIC DATUM: NAD 1927 | CENTRAL MERIDIAN: 91° 20' W
 ELLIPSOID: CLARKE 1866 | X ORIGIN = 2,000,000 FT. AT CENTRAL MERIDIAN
 PROJECTION: LAMBERT | Y ORIGIN = 0 FT. AT 28° 45' N
 ZONE: LOUISIANA SOUTH | GRID UNITS: FEET

2000' 0 2000'
 SCALE IN FEET

Chevron
Chevron U.S.A. Inc.

AS-BUILT
12" BULK GAS PIPELINE
 BLK 148-"A" TOR TO BLK 151-PROD 2 TOR
 SOUTH TIMBALIER AREA
 GULF OF MEXICO

JOHN E. CHANCE & ASSOCIATES, INC.
 CIVIL ENGINEERS & LAND SURVEYORS - LAUFETTE, LOUISIANA
 A MEMBER OF THE PUGCO GROUP OF COMPANIES

JOB NO.: 87-3042 | DATE: FEBRUARY 10, 1988 | SHEET NO.:
 FILE: H:\MARINE\873042 | PRINT: FEBRUARY 10, 1988 | 1 OF 1