

18832

In Reply Refer To: MS 5232

JUL 21 1998

Ms. Beth Atwood
Hall-Houston Oil Company
700 Louisiana, Suite 2100
Houston, Texas 77002

Dear Ms. Atwood:

In accordance with 30 CFR 250.158(b), your letter dated June 4, 1998, transmitted a pipeline construction report for the following right-of-way pipeline located in the West Cameron Area:

<u>Pipeline Segment No.</u>	<u>Size (inches)</u>	<u>Length (feet)</u>	<u>Service</u>	<u>From</u>	<u>To</u>
11589 (Right-of-Way OCS-G 18831)	4 1/2	15,969	Bulk Gas	Platform A Block 535 Lease OCS-G 15109	Platform A Block 554 Lease OCS-G 7629

The data provided in the report, including the following test information, establishes the assigned maximum allowable operating pressure (MAOP) for the pipeline:

<u>Test Pressure (psig)</u>	<u>Duration (hours)</u>	<u>MAOP (psig)</u>	<u>MAOP Determination</u>
7,536	8	5,000	Valve/Flange Rating

The high- and low-pressure sensors shall be set, respectively, no higher than 15 percent above and below the normal operating range. However, the high pilot shall not be set higher than the MAOP of the pipeline.

The total length of the "as-built" pipeline right-of-way is 3.02 miles.

Sincerely,
(Org. Sgd.) J. R. Hennessey

Donald C. Howard
Regional Supervisor
Field Operations

bcc: 1502-01 Segment No. 11589, ROW OCS-G 18832 (MS 5232)
1502-01 ROW OCS-G 18832 (Microfilm) (MS 5033)
MS 5232 Carto

FPatton:amm:7/14/98:HallHous.589

HALL-HOUSTON OIL COMPANY

700 Louisiana, Suite 2100/Houston, Texas 77002

pl. 100.512

Krank

200 G 18832

June 4, 1998

Mr. Donald C. Howard
Regional Supervisor, Field Operations
Minerals Management Service
1201 Elmwood Park Boulevard
New Orleans, Louisiana 70123-2394



Telephone
(713) 228-0711
Fax
(713) 225-7600
(713) 225-7601

Attention: MS 5232 - Mr. David Izon

RE: Construction Report, As-Built Survey Plan, Hydrostatic Test Results
and Digital diskette for Dual 4.5" pipeline
Segment No. 18831, OCS-G 11588 and
Segment No. 18832, OCS-G 11589
West Cameron Area, Block 535 - West Cameron Area, Block 554

Gentlemen:

Your letter dated October 9, 1997, granted approval for the installation, operation and maintenance of dual 4.5 inch R-O-W pipeline, Segment # 18831, G-11588 and Segment # 18832, G-11589 from Hall-Houston Oil Company's Platform B in Block 535, West Cameron Area, to Burlington's Platform A in Block 554, West Cameron Area.

Hall-Houston Oil Company submits in triplicate, the successfully performed and completed hydrostatic test on the subject line conducted April 20, 1998, as reflected on the enclosed test chart and test record for the pipeline, in addition three copies of the certified as-built location plat, in accordance with 250.158(b) are included. The wells commenced production on April 22, 1998.

In accordance with 30 CFR 250.158(b) and NTL 97-08, Hall-Houston also encloses one 3.5" diskette of the digital as-built coordinates of this new pipeline route in the appropriate format.

Should you have any questions concerning this matter, please contact the undersigned.

Sincerely,

Beth Atwood
Beth Atwood
Regulatory Coordinator

enclosures

e:\pipeline\asbft\wc535

disc 1/2-535

**Riser "A" STRUCTURE
West Cameron Block 535**

X= 1,429,216'
Y= -119,751'
Lat. 28° 19' 30.91"N
Long. 93° 06' 24.61"W

WC 535
HALL-HOUSTON OIL COMPANY
OSC-G-15109

WC 534

FAIRWAY

Block Line Crossing

X= 1,429,532'
Y= -122,741'
Lat. 28° 19' 01.37"N
Long. 93° 06' 20.55"W

**AS-BUILT DUAL 4.5"
GAS/COND. PIPELINE**
SEGMENT NO. 11588 & 11589
TOTAL LENGTH = 15,969 FT.

WC 554

**LOUISIANA LAND AND EXPLORATION/
HALL-HOUSTON OIL COMPANY**
OSC-G-7629

WC 555

TIE	COORDINATES	
	X	Y
Riser "A" Structure	1,429,216'	-119,751'
1	1,429,110'	-119,797'
2	1,429,123'	-119,859'
3	1,429,212'	-120,500'
4	1,429,308'	-121,163'
5	1,429,405'	-121,826'
6	1,429,492'	-122,451'
7	1,429,532'	-122,741'
Block X-ing	1,429,582'	-123,102'
8	1,429,678'	-123,737'
9	1,429,772'	-124,329'
10	1,429,853'	-124,954'
11	1,429,952'	-125,618'
12	1,430,050'	-126,297'
13	1,430,185'	-126,839'
14	1,430,452'	-127,441'
15	1,430,685'	-128,022'
16	1,430,934'	-128,623'
17	1,431,185'	-129,226'
18	1,431,430'	-129,810'
19	1,431,697'	-130,443'
20	1,431,971'	-131,096'
21	1,432,209'	-131,675'
22	1,432,473'	-132,323'
23	1,432,524'	-132,763'
24	1,432,485'	-133,228'
25	1,432,306'	-133,676'
26	1,432,148'	-133,790'
27	1,431,960'	-133,910'
28	1,431,773'	-133,953'
29	1,431,551'	-133,926'
30	1,431,337'	-133,883'
31	1,431,156'	-133,794'
Riser "A" Structure	1,431,051'	-133,702'
TOTAL LENGTH: 15,969 FT., 3.02 MI.		

REPRODUCIBLE COPY

**Riser "A" STRUCTURE
West Cameron Block 554**

X= 1,431,051'
Y= -133,702'
Lat. 28° 17' 13.13"N
Long. 93° 06' 01.67"W

1,000' 0 1,000' 2,000' 3,000' 4,000'
HORIZONTAL SCALE: 1" = 2,000'

FLOW

SONAT 10" GAS P/L

I certify this plot represents the horizontal position of pipeline as identified by a survey performed under my supervision in accordance with generally accepted offshore surveying practices.

NOTES:

- Coordinates are referenced to Louisiana Coordinate System of 1927, South Zone. Units are in U.S. Survey Feet.
- This plot represents a survey of the horizontal position of pipeline as identified during construction.

Legend

- Denotes position of anodes on pipeline.
- Denotes other positions on pipeline.
- Denotes proposed pipeline Right-of-Way 200' wide.

DAVID K. BURDEAUX
REG. No. 4713
REGISTERED

LAND SURVEYOR

DAVID K. BURDEAUX, P.L.S.
REGISTRATION NO. 4713 - STATE OF LOUISIANA

HALL-HOUSTON OIL COMPANY
HOUSTON TEXAS

**AS-BUILT DUAL 4.5"
GAS/CONDENSATE PIPELINES**
**FROM WEST CAMERON BLOCK 535 "A" STRUCTURE
TO WEST CAMERON 554 "A" STRUCTURE**

cochrane
TECHNOLOGIES, INC.
1-800-346-3745 LAFAYETTE, LA.

PREPARED FOR:
HORIZON OFFSHORE CONTRACTORS, INC.
HOUSTON, TEXAS

DRAWING NO.: 3474-1

DRAFTED BY: J.C.V.

DATE: JUNE 2, 1998 MAP: 1 OF 1

**HORIZON OFFSHORE CONTRACTORS, INC.****JOB COMPLETION CERTIFICATION**

BEST AVAILABLE COPY

Installation Vessel: AMERICAN CONSTITUTION Job #: _____ Date: 20 APRIL, 1998

Horizon Offshore Contractors, Inc. has successfully completed, to the satisfaction of the Company representative, the contracted scope of work as follows:

Company Name: HALL HOUSTONLocation: WEST CAMERON 535B / WEST CAMERON 554A**Description
Of Work:**

Tie-in 2 pre-laid 4" pipelines at West Cameron 535 to existing risers. Jet down all associated spoils and pipe sections to three feet below natural bottom. Install 2 4" risers and associated clamps at West Cameron 534. Tie-in 2 pre-laid 4" pipelines to the installed risers at W.C. 534. Jet down all spoils and pipe sections to three feet below natural bottom.

Pig and test both pipelines from top of risers at WC 535 to top of risers at WC 554. Gauging pigs were run and the plates were inspected and accepted as good by Hall Houston rep. Gene Falcon.

Hydro-test consisted of 7500 PSI for 8 hours. Test chart was accepted as good by Hall Houston rep. Gene Falcon.

Both pipelines and risers were de-watered with air and then filled with nitrogen as per Hall Houston requirements.

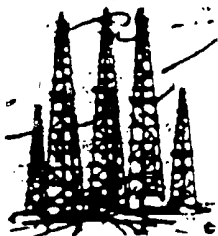
Company Representative: Gene Falcon
NOT AN ACCEPTANCE OF PREPRINTED
TERMS AND CONDITIONS.

HOCI Representative: [Signature]Witness: Ed Krupich**Comments:**

Gauging plates from the gauging pigs for both lines were retained by Hall Houston rep. Gene Falcon.
Hydro-test charts were retained by Hall Houston rep. Gene Falcon.

EXTRA WORK:

- Support bagging of riser tube turns at WC 554 due to scour.
- Anode removal and replacement due to obstruction of riser clamp installation.



DOWN
HOLE
PRESSURE, INC.
INSTRUMENT RENTALS & REPAIRS

Phone (318) 837-2755

Fax (318) 837-2756

1036-A South Cruise Ave.
Broussard, LA 70518

Surface Gauges
Dead Weight Testers
Barton Recorders
Vaetrix Gauge I
5, 10 & 20,000 PSI

Sub Surface Gauges
Electronic & Mechanical
0-25,000 PSI Ranges
Temperature Gauges
0-450 Degrees F.

BEST AVAILABLE COPY

CALIBRATION CERTIFICATE

BARTON METER

SERIAL NUMBER 242A-52397L PRESSURE RANGE 10000 PSI

Calibrated in Vertical Position

Temperature 70 F.

This is to certify that this instrument has been inspected and tested against Pressure Standard Chandler Engineering Dead Weight Tester Model # 58-200H, Serial # 16210 traceable to the National Institute of Standards and Technology, NIST Reference # 105, Procedure # MTP-132. Calibration Certification No. 031798-01. The calibration system conforms to the requirements of MIL-STD. 45662A as ISO-9000 procedures. Date Calibrated (03/23/1998).

Special Conditions: _____

DATE OF CALIBRATION

4-16-98

TECHNICIAN

Reggie L. Landon



DOWN
HOLE
PRESSURE, INC.
INSTRUMENT RENTALS & REPAIRS

Phone (318) 837-2755
Fax (318) 837-2758
1038-A South Cruise Ave.
Broussard, LA 70518

Surface Gauges
Dead Weight Testers
Barton Recorders
Vactrix Gauge 1
5, 10 & 20,000 PSI

Sub Surface Gauges
Electronic & Mechanical
0-25,000 PSI Ranges
Temperature Gauges
0-450 Degrees F.

BEST AVAILABLE COPY

CALIBRATION CERTIFICATE

BARTON METER

SERIAL NUMBER 242A-52997R PRESSURE RANGE 10000 PSI

Calibrated in Vertical Position

Temperature 70 F.

This is to certify that this instrument has been inspected and tested against Pressure Standard Chandler Engineering Dead Weight Tester Model # 58-200H, Serial # 16210 traceable to the National Institute of Standards and Technology, NIST Reference # 105, Procedure # MTP-132. Calibration Certification No. 031798-01. The calibration system conforms to the requirements of MIL-STD. 45662A as ISO-9000 procedures. Date Calibrated (03/23/1998).

Special Conditions: _____

DATE OF CALIBRATION

4-16-98

TECHNICIAN

Leslie J. Jarama



DOWN
HOLE
PRESSURE, INC.
INSTRUMENT RENTALS & REPAIRS

Phone (318) 837-2755
Fax (318) 837-2758
1036-A South Cross Ave.
Broussard, LA 70518

Surface Gauges
Dead Weight Testers
Barton Recorders
Vastrix Gauge 1
5, 10 & 20,000 PSI

Sub Surface Gauges
Electronic & Mechanical
0-25,000 PSI Ranges
Temperature Gauges
0-450 Degrees F.

BEST AVAILABLE COPY

TEMPERATURE
CALIBRATION CERTIFICATE

BARTON METER

SERIAL NUMBER 242A-52997R RANGE 0-150 DEG. F

Calibrated in Vertical Position

This is to certify that this instrument has been inspected and tested against Digital Thermometer No. 301800, traceable to the National Institute of Standards & Technology (NIST). Instrument Model #10-TM99A-E & Probe Model #10-1075, Calibrated (05/09/1997).

Special Conditions: _____

DATE OF CALIBRATION

4-16-98

TECHNICIAN

[Signature]

BEST AVAILABLE COPY

Surface Gauges
Dead Weight Testers
Barton Recorders
Vactrix Gauge 1
5, 10 & 20,000 PSI

Sub Surface Gauges
Electronic & Mechanical
0-25,000 PSI Ranges
Temperature Gauges
0-450 Degrees F.

TEMPERATURE CALIBRATION CERTIFICATE

BARTON METER

SERIAL NUMBER

L004589

RANGE

0 to 150 Deg. F

Calibrated in Vertical Position

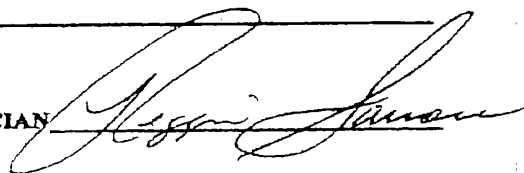
This is to certify that this instrument has been inspected and tested against Digital Thermometer No. 301800 traceable to National Institute of Standards & Technology (NIST) Instrument Model #10-TM99A-E & Probe Model #10-1075, Calibrated 05/09/1997.

Special Conditions: _____

DATE OF CALIBRATION

4-1-98

TECHNICIAN



DOWN
HOLE

PRESSURE, INC.

INSTRUMENT RENTALS & REPAIRS

Phone (318) 837-2755

Fax (318) 837-2756

1036-A South Cross Ave.
Broussard, LA 70518

Pressure Gauges
Digital Pressure Testers
Barium Recorders
Vastrix Gauge 1
5, 10 & 20,000 PSI

Sub Surface Gauges
Electronic & Mechanical
0-25,000 PSI Ranges
Temperature Gauges
0-450 Degrees F.

BEST AVAILABLE COPY

TEMPERATURE CALIBRATION CERTIFICATE

BARTON METER

SERIAL NUMBER L00069

RANGE 0-150 Deg. F

Calibrated in Vertical Position

This is to certify that this instrument has been inspected and tested against
Digital Pressure Meter No. 301800 traceable to National Institute of Standards &
Technology NIST Instrument Model #10-TM99A-E & Probe Model #10-1075,
Calibration #10-2023297.

Special Conditions: _____

DATE OF CALIBRATION

4-2-98

TECHNICIAN

[Signature]



DOWN
HOLE
PRESSURE, INC.
INSTRUMENT RENTALS & REPAIRS

Phone (318) 837-2755
Fax (318) 837-2758
1036-A South Cross Ave.
Broussard, LA 70518

Surface Gauges
Dead Weight Testers
Barton Recorders
Vaetrix Gauge 1
5, 10 & 20,000 PSI

Sub Surface Gauges
Electronic & Mechanical
0-25,000 PSI Ranges
Temperature Gauges
0-450 Degrees F.

BEST AVAILABLE COPY

CALIBRATION CERTIFICATE

VAETRIX GAUGE 1

SERIAL NUMBER 51606-4 PRESSURE RANGE 10000 PSI

Calibrated in Vertical Position

Temperature 70 F.

This is to certify that this instrument has been inspected and tested against Pressure Standard Chandler Engineering Dead Weight Tester Model # 58-200H, Serial # 16210 traceable to the National Institute of Standards and Technology, NIST Reference # 105, Procedure # MTP-142. Calibration Control # 04297099-01. The calibration system conforms to the requirements of ISO-9000 criteria. (MIL-STD. 45662A). Date Calibrated (04-01-1997).

Special Conditions: _____

DATE OF CALIBRATION

2-3-98

TECHNICIAN

Reysi Sanon



DOWN
HOLE
PRESSURE, INC.
INSTRUMENT RENTALS & REPAIRS

Phone (318) 837-2755
Fax (318) 837-2756
1036-A South Cruse Ave.
Broussard, LA 70518

Surface Gauges
Dead Weight Testers
Barton Recorders
Vaetrix Gauge 1
5, 10 & 20,000 PSI

Sub Surface Gauges
Electronic & Mechanical
0-25,000 PSI Ranges
Temperature Gauges
0-450 Degrees F.

BEST AVAILABLE COPY

CALIBRATION CERTIFICATE

VAETRIX GAUGE 1

SERIAL NUMBER 51606-3 PRESSURE RANGE 16000 PSI

Calibrated in Vertical Position Temperature 70 F.

This is to certify that this instrument has been inspected and tested against Pressure Standard Chandler Engineering Dead Weight Tester Model # 58-200H, Serial # 16210 traceable to the National Institute of Standards and Technology, NIST Reference # 105, Procedure # MTP-142. Calibration Control # 04297099-01. The calibration system conforms to the requirements of ISO-9000 criteria. (MIL-STD. 45662A). Date Calibrated (04-01-1997).

Special Conditions: _____

DATE OF CALIBRATION 1-30-98 TECHNICIAN Alvin L. Laro

Lafayette, La. (318) 232-2911
Houma, La. (504) 878-5351
Lake Charles, La. (318) 439-5400
Alake, Texas (512) 664-2178
Alvin, Texas (713) 331-9271

Greene's Pressure Testing AND Rentals, Inc.

P. O. BOX 2905
LAFAYETTE, LOUISIANA 70502

BEST AVAILABLE COPY

Date: _____

MISCELLANEOUS TEST RECORD TICKET

CHARGE Clean DRLG. CONT Production
ADDRESS 1102 Diver Drive PARISH offshore WELL# _____
CITY New Iberia ORDER# _____ UNIT 4838
LEASE Hall Houston FIELD West Cameron 535-534
DEAD WT. SER.# 51606-3 TEMP. RECORDER SER.# L00069 PRESS. RECORDER SER.# 242A-5237
TESTED PRESSURE 7500 PSI TIME ARRIVED _____ COMP. _____

TIME	DEAD WT.	PRESS. RECORDER	TEMP. RECORDER	AMBIENT THERM.	TIME	DEAD WT.	PRESS. RECORDER	TEMP. RECORDER	AMBIENT THERM.
12:00	7550	7550	71	68	19:00	7524	7524	60	60
12:15	7548	7548	70	68	19:15	7524	7524	60	60
12:30	7545	7545	69	66	19:30	7524	7524	60	60
12:45	7542	7542	69	66	19:45	7524	7524	60	60
13:00	7539	7539	69	66	20:00	7524	7524	60	60
13:15	7536	7536	68	66					
13:30	7534	7534	69	64					
13:45	7534	7534	68	64					
14:00	7533	7533	68	64					
14:15	7532	7532	68	63					
14:30	7532	7532	68	62					
14:45	7532	7532	68	62					
15:00	7532	7532	66	62					
15:15	7531	7531	66	60					
15:30	7530	7530	66	60					
15:45	7529	7529	65	60					
16:00	7528	7528	64	60					
16:15	7528	7528	64	60					
16:30	7527	7527	64	60					
16:45	7526	7526	64	60					
17:00	7526	7526	61	60					
17:15	7525	7525	64	60					
17:30	7525	7525	62	60					
17:45	7525	7525	61	60					
18:00	7525	7525	60	60					
18:15	7524	7524	60	60					
18:30	7524	7524	60	60					
18:45	7524	7524	60	60					

WEATHER CONDITIONS: Cloudy strong winds, AFTER 1500"

stronger winds, rain, and drop in temperature

NOTES: Bump on charts, are from wave action

Pipeline "A"

[Signature]
UNIT OPERATOR

[Signature]
COMPANY REPRESENTATIVE

Lafayette, La. (318) 232-2911
Houma, La. (504) 876-5351
Lake Charles, La. (318) 439-5400
Alice, Texas (512) 664-2178
Alvin, Texas (713) 331-9271

Greene's Pressure Testing

AND

Rentals, Inc. BEST AVAILABLE COPY

P. O. BOX 2905
LAFAYETTE, LOUISIANA 70502

Date: 4-18-98

MISCELLANEOUS TEST RECORD TICKET

CHARGE Ceanic DRLG. CONT. Production
ADDRESS 1902 Diver Drive PARISH Offshore WELL#
CITY New Iberia, La. ORDER# UNIT 4838
LEASE Hall Houston FIELD West Cameron 535-534
DEAD WT. SER.# 5406-4 TEMP. RECORDER SER.# 242A52997R PRESS. RECORDER SER.# 242A52997R
TESTED PRESSURE 7500 TIME ARRIVED COMP

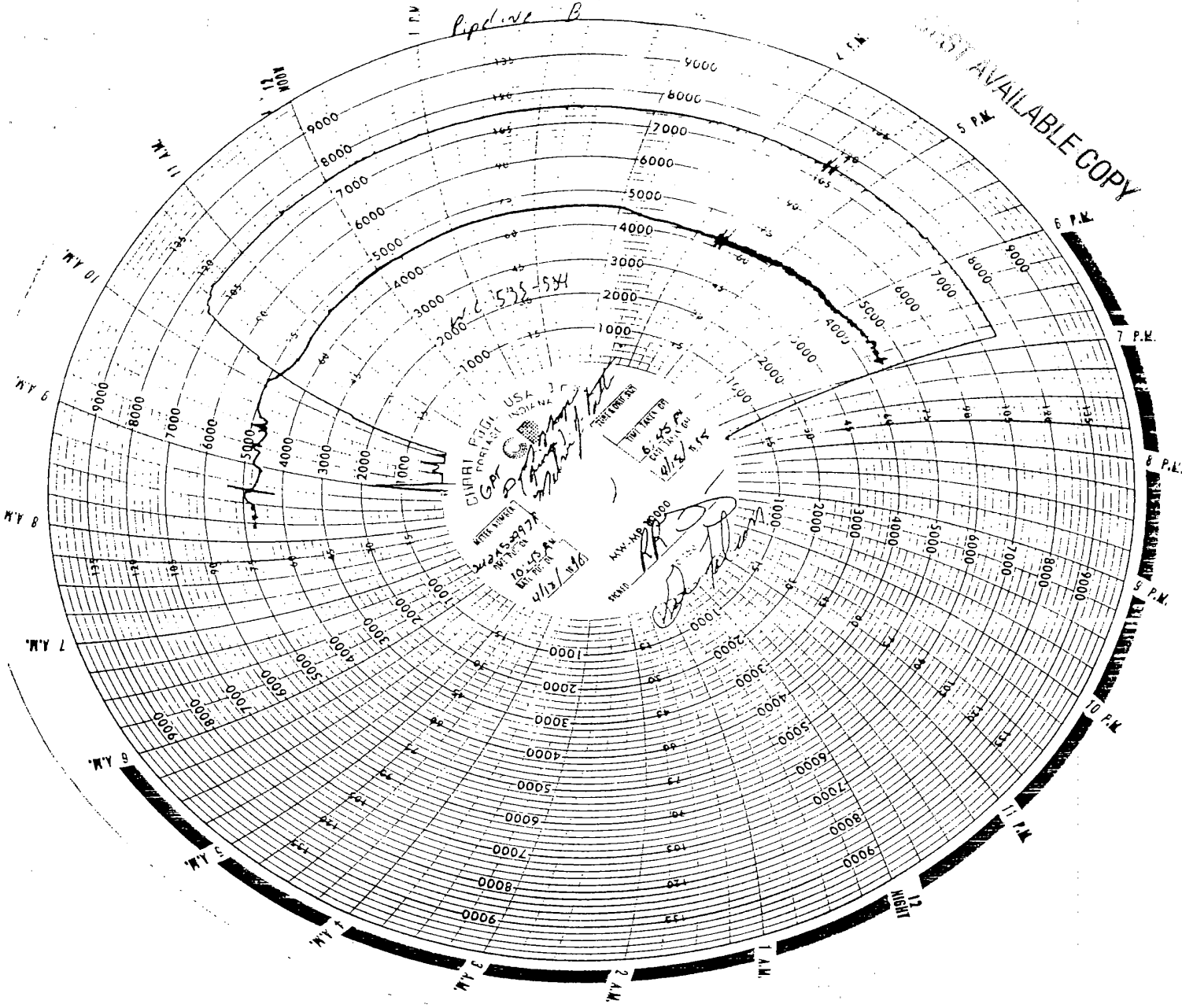
TIME	DEAD WT.	PRESS. RECORDER	TEMP. RECORDER	AMBIENT THERM.	TIME	DEAD WT.	PRESS. RECORDER	TEMP. RECORDER	AMBIENT THERM.
10:45	7555	7555	69	68	17:00	7536	7536	66	60
11:00	7555	7555	69	68	17:15	7536	7536	66	60
11:15	7555	7555	69	68	17:30	7536	7536	66	60
11:30	7555	7555	69	68	17:45	7536	7536	66	60
11:45	7555	7555	69	68	18:00	7536	7536	66	60
12:00	7554	7554	69	68	18:15	7536	7536	66	60
12:15	7554	7554	69	68	18:30	7536	7536	66	60
12:30	7552	7552	69	68	18:45	7536	7536	66	60
12:45	7552	7552	69	68					
13:00	7551	7551	69	68					
13:15	7550	7550	69	68					
13:30	7548	7548	69	68					
13:45	7547	7547	69	68					
14:00	7546	7546	69	68					
14:15	7545	7545	69	68					
14:30	7546	7546	69	68					
14:45	7546	7546	69	68					
15:00	7546	7546	69	68					
15:15	7545	7545	69	68					
15:30	7541	7542	64	60					
15:45	7540	7540	64	60					
16:00	7540	7540	64	60					
16:15	7540	7540	64	60					
16:30	7540	7540	64	60					
16:45	7538	7538	64	60					

WEATHER CONDITIONS: Cloudy strong winds, After 15:00 strong winds, rain, and dropage in temperature

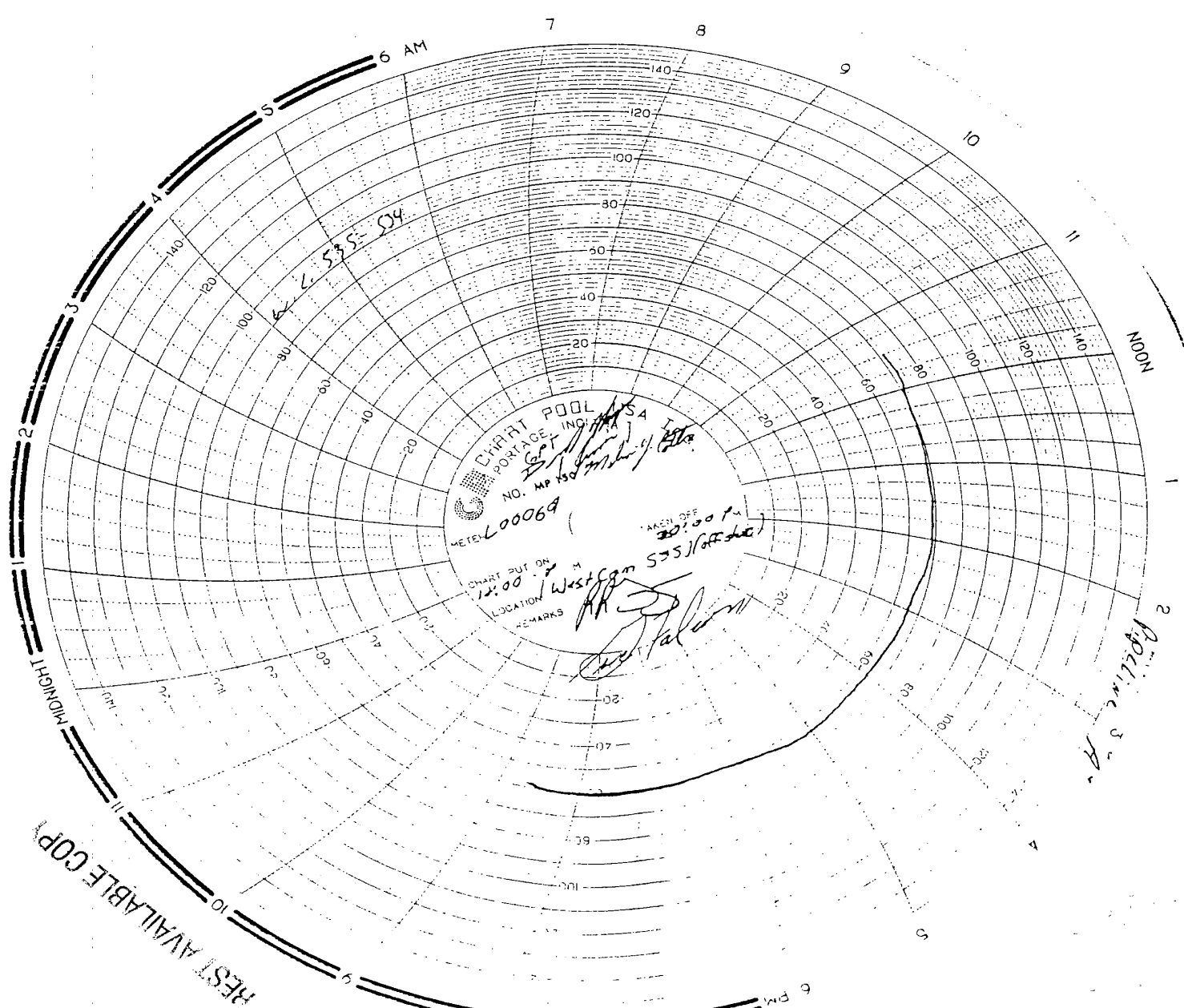
NOTES: All Bumps on charts, are from wave action

UNIT OPERATOR

COMPANY REPRESENTATIVE



NOT AVAILABLE COPY





United States Department of the Interior

MINERALS MANAGEMENT SERVICE

Gulf of Mexico OCS Region
1201 Elmwood Park Boulevard
New Orleans, Louisiana 70123-2394



In Reply Refer To: OCS-G 18832

Instrument:

Filed: August 24, 1998
Executed: August 21, 1998
Approved: January 27, 1999
Effective: June 1, 1998

Hall-Houston Oil Company
Assignor

Newfield Exploration Company 1364
Assignee

BEST AVAILABLE COPY

ACTION: ASSIGNMENT APPROVED

Right-of-way

The approval of this assignment is restricted to record title interest only, and by virtue of this approval, the Assignee is subject to, and shall fully comply with, all applicable regulations now or to be issued under the Outer Continental Shelf Lands Act, as amended. Notwithstanding any agreement between the Assignor and Assignee, the parties remain subject to the liability provisions of the Minerals Management Service regulations codified under 30 CFR 250, Subpart J.

Assignor assigned unto Assignee all of Assignor's record title interest. Record title interest is now held as follows:

OCS-G 18832 Blocks 535 and 554, West Cameron Area

Newfield Exploration Company 100%

Chris C. Oynes

Chris C. Oynes
Regional Director

cc: Assignor
Assignee
Case File

SN 11589
WC 135-534

one mg
2/18/99
1/24



NEWFIELD



August 22, 1998

Minerals Management Service
Adjudication Unit: MS 5421
1201 Elmwood Park Boulevard
New Orleans, Louisiana 70123-2394

RECEIVED
AUG 24 2 39 PM '98
MINERALS MGMT SERVICE
GULF OF MEXICO OCS-ROR
ADJUDICATION UNIT

RE: OCS-G 18832
West Cameron Area, Block 535 to 554
Offshore Louisiana

BEST AVAILABLE COPY

Ladies and Gentlemen:

Enclosed herewith are three (3) originals of the assignment listed below for filing in the above referenced lease file and approval with the Minerals Management Service as follows:

Assignment of Right-of-Way effective June 1, 1998, between Hall-Houston Oil Company, as Assignor, and Newfield Exploration Company, as Assignee, covering Pipeline Right-of-Way bearing Serial No. OCS-G 18832, from Hall-Houston Oil Company's Platform B in Block 535, Lease OCS-G 15109, to Louisiana Land and Exploration Company's Platform A in Block 554, Lease OCS-G 7629, all in the West Cameron Area.

Also enclosed is our check in the amount of \$60.00 for the filing fee for the above Assignment.

Please refer to your GOM Company No. 1364 for Newfield Exploration Company for documents qualifying said party to hold leases and rights-of-way on the Outer Continental Shelf in the Gulf of Mexico.

We hereby request that the above Assignment of Right-of-Way be approved effective **June 1, 1998**, and the approved copy be returned to the undersigned at the above address.

Sincerely,

NEWFIELD EXPLORATION COMPANY

Christina M. Barker
Christina M. Barker
Landman

wc554row2.wpd
enclosures

RECEIVED
AUG 24 2 39 PM '98
OCS-G 18832
MINERALS MANAGEMENT SERVICE
GULF OF MEXICO OCS RCH
ADJUDICATION UNIT

ASSIGNMENT OF RIGHT-OF-WAY

UNITED STATES OF AMERICA §

OUTER CONTINENTAL SHELF §

OFFSHORE LOUISIANA §

KNOW ALL MEN BY THESE PRESENTS:

THAT, WHEREAS, under date of October 9, 1997, the United States Department of the Interior, Minerals Management Service, approved an Application for a Right-of-Way submitted by Hall-Houston Oil Company described as follows:

Pipeline Right-of-Way granted October 9, 1997, bearing Serial No. OCS-G 18832, Segment #11589, 200' in width and 3.07 miles in length, for the installation, operation, and maintenance of a 4-1/2-inch pipeline (Line B) to transport bulk gas from Hall-Houston Oil Company's Platform B in Block 535, Lease OCS-G 15109, to Louisiana Land and Exploration Company's Platform A in Block 554, Lease OCS-G 7629, all in the West Cameron Area.

BEST AVAILABLE COPY

WHEREAS, Hall-Houston Oil Company (hereinafter referred to as "Assignor") desires to transfer all its right, title and interest in and to said Right-of-Way to Newfield Exploration Company (hereinafter referred to as "Assignee");

NOW THEREFORE, Assignor, for and in consideration of Fifty Dollars (\$50.00) cash in hand paid and other good and valuable considerations, the receipt and adequacy of which are hereby acknowledged, does hereby grant, bargain, sell, assign and convey unto Assignee, its successors and assigns, the Right-of-Way described above.

TO HAVE AND TO HOLD the Right-of-Way unto Assignee, its successors and assigns, forever, subject to the terms and provisions of the Right-of-Way and this Assignment and Assignor does hereby bind itself, its successors and assigns, to warrant and defend, all and singular, title to the Right-of-Way unto Assignee, its successors and assigns, against every person whomsoever lawfully claiming or to claim the same or any party thereof, by, through or under Assignor, but not otherwise.

IT IS UNDERSTOOD AND AGREED that such transfer shall cause the Assignee to assume all costs, expenses and other obligations chargeable under the Right-of-Way after the Effective Date (as defined hereinbelow) to such interest and shall likewise operate to give and grant to the Assignee all benefits owing thereunder to the ownership of such interest.

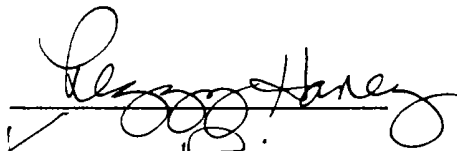
This Assignment shall be effective for all purposes as of June 1, 1998 (the "Effective Date"), subject to the approval by the Minerals Management Service.

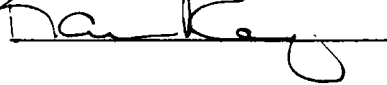
APPROVED

Chris C. O'Neal
BY CHRIS C. O'NEAL
REGIONAL DIRECTOR

Executed in triplicate originals this 21st day of August, 1998.

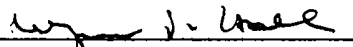
WITNESSES:





ASSIGNOR:

Hall-Houston Oil Company

By: 

Wayne P. Hall
President

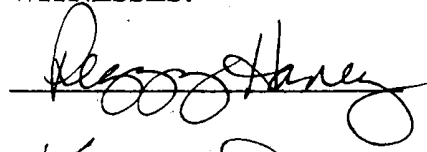
ACCEPTANCE OF ASSIGNMENT

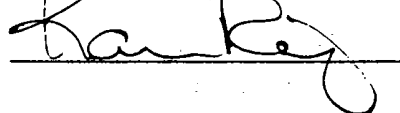
Newfield Exploration Company, Assignee herein, expressly assumes and agrees to discharge all duties and obligations arising out of or imposed by and under each and all of the terms and provisions of the Right-of-Way.

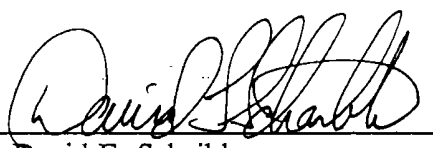
ASSIGNEE:

Newfield Exploration Company

WITNESSES:

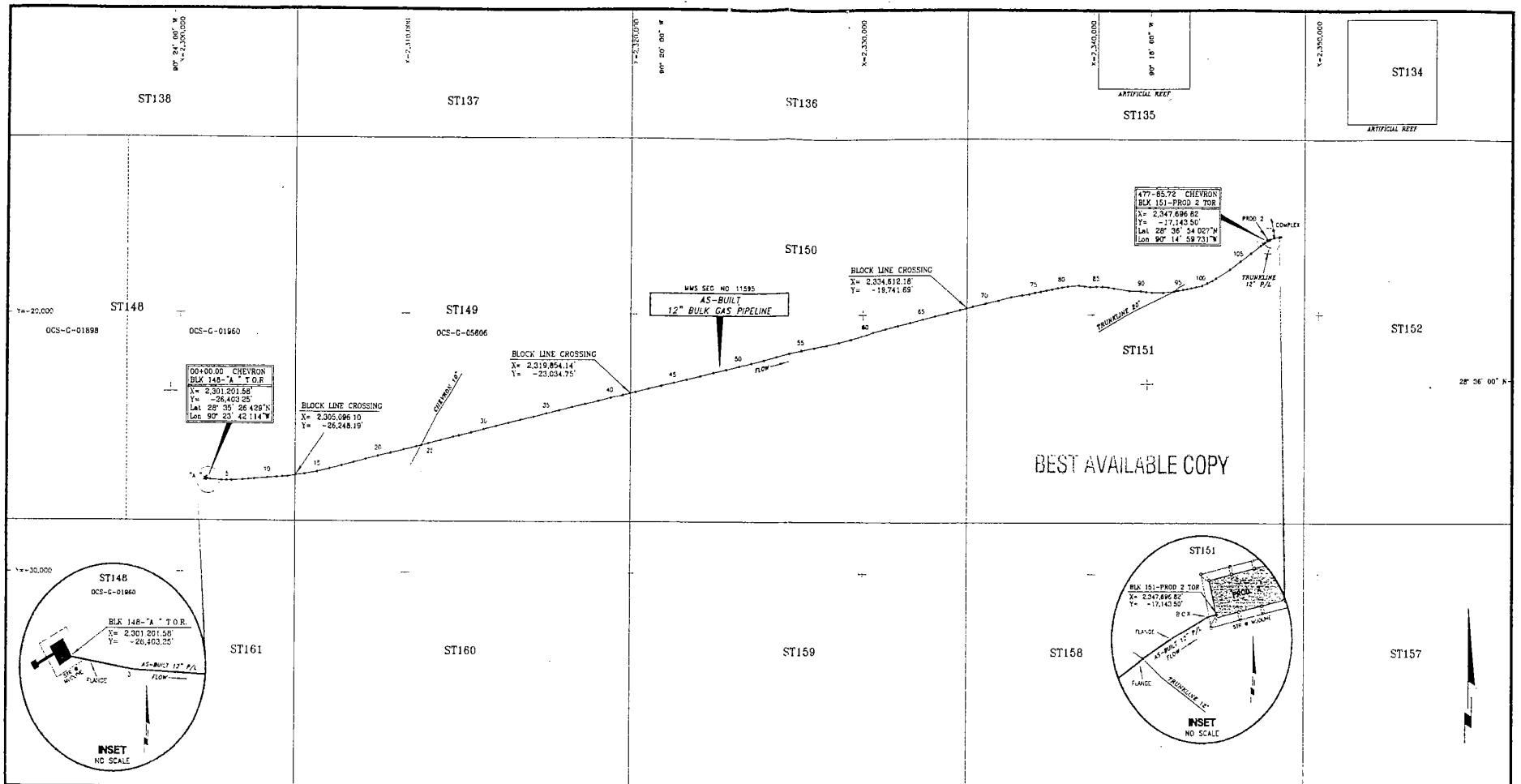




By: 

David F. Schaible
Vice President

BEST AVAILABLE COPY



COORDINATE TABLE												NOTES & CERTIFICATION		GEODETIC DATUM: NAD 1927		CENTRAL MERIDIAN: 91° 20' W		ELLIPSOID: CLAPKE 1866		X ORIGIN = 2,000,000 FT. AT CENTRAL MERIDIAN		PROJECTION: LAMBERT		Y ORIGIN = 0 FT. AT 28° 40' N		ZONE: LOUISIANA SOUTH		GRID UNITS: FEET				
FILE #	X COORDINATE	Y COORDINATE	FILE #	X COORDINATE	Y COORDINATE	FILE #	X COORDINATE	Y COORDINATE	FILE #	X COORDINATE	Y COORDINATE	FILE #	X COORDINATE	Y COORDINATE	FILE #	X COORDINATE	Y COORDINATE	FILE #	X COORDINATE	Y COORDINATE	FILE #	X COORDINATE	Y COORDINATE	FILE #	X COORDINATE	Y COORDINATE	FILE #	X COORDINATE	Y COORDINATE	FILE #	X COORDINATE	Y COORDINATE
1	2,301,262	-26,403	27	2,312,098	-24,753	53	2,326,170	-21,634	79	2,335,512	-18,971	105	2,346,534	-17,901	131	2,346,534	-17,901	157	2,346,534	-17,901	183	2,346,534	-17,901	209	2,346,534	-17,901	235	2,346,534	-17,901	261	2,346,534	-17,901
2	2,301,244	-26,411	28	2,312,351	-24,705	54	2,326,723	-21,505	80	2,336,709	-18,908	106	2,346,893	-17,814	132	2,346,893	-17,814	158	2,346,893	-17,814	184	2,346,893	-17,814	210	2,346,893	-17,814	236	2,346,893	-17,814	262	2,346,893	-17,814
3	2,301,337	-26,437	29	2,312,902	-24,556	55	2,327,286	-21,377	81	2,337,250	-18,907	107	2,347,115	-17,731	133	2,347,115	-17,731	159	2,347,115	-17,731	185	2,347,115	-17,731	211	2,347,115	-17,731	237	2,347,115	-17,731	263	2,347,115	-17,731
4	2,301,832	-26,456	30	2,313,446	-24,457	56	2,327,827	-21,268	82	2,337,254	-18,871	108	2,347,534	-17,635	134	2,347,534	-17,635	160	2,347,534	-17,635	186	2,347,534	-17,635	212	2,347,534	-17,635	238	2,347,534	-17,635	264	2,347,534	-17,635
5	2,302,056	-26,455	31	2,314,006	-24,334	57	2,328,386	-21,173	83	2,337,663	-18,898	109	2,347,952	-17,552	135	2,347,952	-17,552	161	2,347,952	-17,552	187	2,347,952	-17,552	213	2,347,952	-17,552	239	2,347,952	-17,552	265	2,347,952	-17,552
6	2,302,272	-26,460	32	2,314,559	-24,211	58	2,329,035	-21,000	84	2,337,900	-18,824	110	2,348,391	-17,472	136	2,348,391	-17,472	162	2,348,391	-17,472	188	2,348,391	-17,472	214	2,348,391	-17,472	240	2,348,391	-17,472	266	2,348,391	-17,472
7	2,302,765	-26,434	33	2,315,109	-24,090	59	2,329,484	-20,910	85	2,338,155	-18,815	111	2,348,754	-17,393	137	2,348,754	-17,393	163	2,348,754	-17,393	189	2,348,754	-17,393	215	2,348,754	-17,393	241	2,348,754	-17,393	267	2,348,754	-17,393
8	2,303,015	-26,414	34	2,315,655	-23,973	60	2,330,163	-20,763	86	2,338,411	-18,816	112	2,349,097	-17,314	138	2,349,097	-17,314	164	2,349,097	-17,314	190	2,349,097	-17,314	216	2,349,097	-17,314	242	2,349,097	-17,314	268	2,349,097	-17,314
9	2,303,265	-26,395	35	2,316,216	-23,844	61	2,330,451	-20,672	87	2,338,662	-18,834	113	2,349,400	-17,235	139	2,349,400	-17,235	165	2,349,400	-17,235	191	2,349,400	-17,235	217	2,349,400	-17,235	243	2,349,400	-17,235	269	2,349,400	-17,235
10	2,303,543	-26,349	36	2,316,765	-23,722	62	2,331,014	-20,542	88	2,339,008	-18,881	114	2,349,700	-17,156	140	2,349,700	-17,156	166	2,349,700	-17,156	192	2,349,700	-17,156	218	2,349,700	-17,156	244	2,349,700	-17,156	270	2,349,700	-17,156
11	2,303,262	-26,321	37	2,317,321	-23,595	63	2,331,525	-20,421	89	2,339,520	-18,921	115	2,350,000	-17,077	141	2,350,000	-17,077	167	2,350,000	-17,077	193	2,350,000	-17,077	219	2,350,000	-17,077	245	2,350,000	-17,077	271	2,350,000	-17,077
12	2,304,512	-26,406	38	2,317,874	-23,474	64	2,332,111	-20,306	90	2,340,077	-18,906	116	2,350,300	-16,998	142	2,350,300	-16,998	168	2,350,300	-16,998	194	2,350,300	-16,998	220	2,350,300	-16,998	246	2,350,300	-16,998	272	2,350,300	-16,998
13	2,304,762	-26,383	39	2,318,424	-23,351	65	2,332,657	-20,179	91	2,340,519	-18,816	117	2,350,597	-16,919	143	2,350,597	-16,919	169	2,350,597	-16,919	195	2,350,597	-16,919	221	2,350,597	-16,919	247	2,350,597	-16,919	273	2,350,597	-16,919
14	2,305,499	-26,184	40	2,318,972	-23,227	66	2,333,210	-20,056	92	2,341,019	-18,735	118	2,350,896	-16,840	144	2,350,896	-16,840	170	2,350,896	-16,840	196	2,350,896	-16,840	222	2,350,896	-16,840	248	2,350,896	-16,840	274	2,350,896	-16,840
15	2,306,064	-26,156	41	2,319,521	-23,109	67	2,333,758	-19,935	93	2,341,065	-18,654	119	2,351,193	-16,764	145	2,351,193	-16,764	171	2,351,193	-16,764	197	2,351,193	-16,764	223	2,351,193	-16,764	249	2,351,193	-16,764	275	2,351,193	-16,764
16	2,306,629	-26,090	42	2,320,060	-22,987	68	2,334,306	-19,813	94	2,341,560	-18,573	120	2,351,490	-16,685	146	2,351,490	-16,685	172	2,351,490	-16,685	198	2,351,490	-16,685	224	2,351,490	-16,685	250	2,351,490	-16,685	276	2,351,490	-16,685
17	2,307,173	-25,863	43	2,320,619	-22,862	69	2,334,853	-19,690	95	2,342,057	-18,492	121	2,351,787	-16,606	147	2,351,787	-16,606	173	2,351,787	-16,606	199	2,351,787	-16,606	225	2,351,787	-16,606	251	2,351,787	-16,606	277	2,351,787	-16,606
18	2,307,716	-25,737	44	2,321,163	-22,742	70	2,335,402	-19,564	96	2,342,550	-18,311	122	2,352,080	-16,527	148	2,352,080	-16,527	174	2,352,080	-16,527	200	2,352,080	-16,527	226	2,352,080	-16,527	252	2,352,080	-16,527	278	2,352,080	-16,527
19	2,308,263	-25,616	45	2,321,714	-22,621	71	2,335,950	-19,449	97	2,343,047	-18,230	123	2,352,373	-16,449	149	2,352,373	-16,449	175	2,352,373	-16,449	201	2,352,373	-16,449	227	2,352,373	-16,449	253	2,352,373	-16,449	279	2,352,373	-16,449
20	2,308,815	-25,484	46	2,322,263	-22,500	72	2,336,497	-19,322	98	2,343,539	-18,052	124	2,352,667	-16,370	150	2,352,667	-16,370	176	2,352,667	-16,370	202	2,352,667	-16,370	228	2,352,667	-16,370	254	2,352,667	-16,370	280	2,352,667	-16,370
21	2,309,364	-25,374	47	2,322,812	-22,383	73	2,336,945	-19,204	99	2,344,030	-17,927	125	2,352,959	-16,291	151	2,352,959	-16,291	177	2,352,959	-16,291	203	2,352,959	-16,291	229	2,352,959	-16,291	255	2,352,959	-16,291	281	2,352,959	-16,291
22	2,309,919	-25,253	48	2,323,319	-22,263	74	2,337,493	-19,080	100	2,344,521	-17,808	126	2,353,250	-16,212	152	2,353,250	-16,212	178	2,353,250	-16,212	204	2,353,250	-16,212	230	2,353,250	-16,212	256	2,353,250	-16,212	282	2,353,250	-16,212
23	2,310,466	-25,129	49	2,323,867	-22,118	75	2,337,938	-18,944	101	2,345,006	-17,719	127	2,353,542	-16,133	153	2,353,542	-16,133	179	2,353,542	-16,133	205	2,353,542	-16,133	231	2,353,542	-16,133	257	2,353,542	-16,133	283	2,353,542	-16,133
24	2,310,676	-25,082	50	2,324,517	-21,999	76	2,337,772	-18,806	102	2,345,272	-17,540	128	2,353,834	-16,054	154	2,353,834	-16,054	180	2,353,834	-16,054	206	2,353,834	-16,054	232	2,353,834	-16,054	258	2,353,834	-16,054	284	2,353,834	-16,054
25	2,311,007	-25,003	51	2,325,064	-21,878	77	2,338,018	-18,658	103	2,345,431	-17,361	129	2,354,126	-15,975	155	2,354,126	-15,975	181	2,354,126	-15,975	207	2,354,126	-15,975	233	2,354,126	-15,975	259	2,354,126	-15,975	285	2,354,126	-15,975
26	2,311,556	-24,892	52	2,325,619	-21,751	78	2,338,267	-18,502	104	2,345,680	-17,162	130	2,354,418	-15,893	156	2,354,418	-15,893	182	2,354,418	-15,893	208	2,354,418	-15,893	234	2,354,418	-15,893	260	2,354,418	-15,893	286	2,354,418	-15,893

NOTES:

1) LENGTH OF RISERS NOT INCLUDED IN TOTAL FOOTAGE AND STATIONING OF AS-BUILT PIPELINE.

2) PREPARED FOR GLOBAL INDUSTRIES COASTAL DIVISION.

3) T.C.P. REPRESENTS TOP OF RISER. S.D.R. REPRESENTS BOTTOM OF RISER.

4) DETAIL INSET TAKEN FROM CONSTRUCTION DRAWINGS.

5) * DENOTES ANODE POSITION AS SUPPLIED (MAY NOT REFLECT ALL ANODES).

CERTIFIED CORRECT AS TO HORIZONTAL POSITION OF AS-BUILT PIPELINE.

James S. Jettison

REG. PROFESSIONAL LAND SURVEYOR NO. 4804
STATE OF LOUISIANA

Chevron

Chevron U.S.A. Inc.

AS-BUILT

12" BULK GAS PIPELINE

BLK 148—"A" TOR TO BLK 151-PROD 2 TOR

SOUTH TIMBALIER AREA

GULF OF MEXICO

STATE OF LOUISIANA

JAMES T. LATHROP
REG. NO. 4804
REGISTERED PROFESSIONAL
LAND SURVEYOR

JOHN E. CHANCE & ASSOCIATES, INC.

CIVIL ENGINEERS & LAND SURVEYORS - LAUREL, MISSISSIPPI

A MEMBER OF THE PUGRO GROUP OF COMPANIES

JOB NO.: 97-3047
DATE: FEBRUARY 10, 1998

SHEET NO.

NOTES & CERTIFICATION

NOTES:

- 1) LENGTH OF RISERS NOT INCLUDED IN TOTAL FOOTAGE AND STATIONING OF AS-BUILT PIPELINE.
- 2) PREPARED FOR GLOBAL INDUSTRIES COASTAL DIVISION.
- 3) "C.P." REPRESENTS TOP OF RISER. S.O.R. REPRESENTS BOTTOM OF RISER.
- 4) DETAIL INSET TAKEN FROM CONSTRUCTION DRAWINGS.
- 5) * DENOTES ANODE POSITION AS SUPPLIED (MAY NOT REFLECT ALL ANODES).

CERTIFIED CORRECT AS TO HORIZONTAL POSITION OF AS-BUILT PIPELINE.

James J. Lattin
 PROFESSIONAL LAND SURVEYOR NO. 4804
 STATE OF LOUISIANA

Chevron U.S.A. Inc.

AS-BUILT 12" BULK GAS PIPELINE
 BLK 148-"A" TOR TO BLK 151-PROD 2 TOR
 SOUTH TIMBALIER AREA
 GULF OF MEXICO

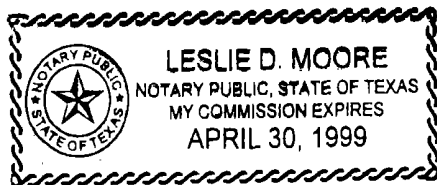
JOHN E. CHANCE & ASSOCIATES, INC.
 CIVIL ENGINEERS & LAND SURVEYORS - LAUFETTE, LOUISIANA
 A MEMBER OF THE PUGRO GROUP OF COMPANIES

JOB NO.: 97-3047 DATE: FEBRUARY 10, 1998 SHEET NO. 1 OF 1
 FILE: H:\MARINE\973047 PRINT: FEBRUARY 10, 1998

THE STATE OF TEXAS §

COUNTY OF HARRIS §

On this 21st day of August, 1998, before me appeared **Wayne P. Hall**, to me personally known, who, being by me duly sworn (or affirmed) did say that he is the **President of Hall-Houston Oil Company** and that the instrument was signed on behalf of the corporation and by the authority of its board of directors and that **Wayne P. Hall** acknowledged the instrument to be the free act and deed of the corporation.

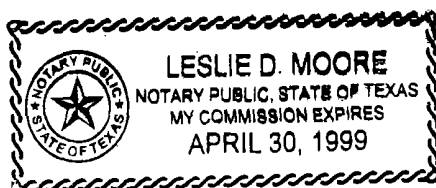


Leslie D. Moore
NOTARY PUBLIC IN AND FOR
THE STATE OF TEXAS

THE STATE OF TEXAS §

COUNTY OF HARRIS §

On this 21st day of August, 1998, before me appeared **David F. Schaible** to me personally known, who, being by me duly sworn (or affirmed) did say that he is the **Vice President of Newfield Exploration Company**, and that the instrument was signed on behalf of the corporation by the authority of its board of directors and that **David F. Schaible** acknowledged the instrument to be the free act and deed of the corporation.



Leslie D. Moore
NOTARY PUBLIC IN AND FOR
THE STATE OF TEXAS

BEST AVAILABLE COPY