

MICRO
update

In Reply Refer To: MS 5232

Mr. Stan Mendenhall
Millennium Offshore Group, Inc.
5300 Memorial
Suite 1070
Houston, Texas 77007

Dear Mr. Mendenhall:

Reference is made to the following application that has been reviewed by the Minerals Management Service:

Application Type: Right-of-Way Relinquishment and Pipeline Decommissioning
(Complete)

Application Date: July 19, 2005

Work Description: Requests approval to relinquish Right of Way OCS-G16078 in its entirety and to decommission pipeline in place.

Segment Number	Size (inches)	Length (feet)	Service	From	To
11123	06	7332	Gas/ Condensate	Caisson "A" East Cameron Area Block 171 OCS-G12836	20-inch SSTI East Cameron Area Block 155 OCS-G12830

Assigned Right-of-Way Number: OCS-G16078

Effective Date of Relinquishment: July 28, 2005

Pursuant to 30 CFR 250.1000(b), the relinquishment of the right-of-way grant associated with this pipeline is hereby approved.

In accordance with 30 CFR 250.1751, your request to decommission this pipeline is hereby approved, and in accordance with 30 CFR 1010 (h), the requirement that the pipeline be removed is hereby waived.

You must cease transporting hydrocarbons through this pipeline immediately and complete the aforementioned decommissioning operations within 90 days of the date of this letter.

Sincerely,

Donald C. Howard
Regional Supervisor
Field Operations

bcc: 1502-01 Segment No. 11123 with application (MS5232)
1502-01 ROW OCS-G16078 (Microfilm) (MS 5033)
bshrestha:bs:11123



✓
Micro

July 19, 2005

Mr. Donald C. Howard
Regional Supervisor
Office of Field Operations
U.S. Department of the Interior
Minerals Management Service
1201 Elmwood Park Boulevard
New Orleans, Louisiana 70123-2394

Attention: Mr. Alex Alvarado
Pipeline Unit

Re: Application for Relinquishment of Right-of-Way (OCS-G 16078) and Proposed Abandonment In-Place of 6-Inch Gas/Condensate Right-of-Way Pipeline (Segment No. 11123), Originating at Platform A, East Cameron Block 171 and Terminating at a Subsea Tie-In, East Cameron Block 155, OCS Federal Waters, Gulf of Mexico, Offshore, Louisiana

Gentlemen:

Millennium Offshore Group, Inc. hereby requests approval to relinquish the right-of-way easement OCS-G 16078 and abandon in-place the proposed 6-inch gas/condensate right-of-way pipeline, Segment No. 11123, originating at Platform A, East Cameron Block 171 and terminating at a Subsea Tie-In, East Cameron Block 155, Offshore, Louisiana.

In support of our request, a proposed abandonment procedure is enclosed.

Should you have any questions or require additional information, please contact our regulatory representative, Melissa Logan, J. Connor Consulting, Inc., at (281) 578-3388.

Sincerely,

Millennium Offshore Group, Inc.

Stan Mordenhall
Executive Vice President

Ref 13400/EC171/RELI Date 07/27/2005
Dep. MELISSA LOGAN Wgt: 0 1 LBS

SHIPPING: 11.74
SPECIAL: 1.23
HANDLING: 0.00
TOTAL: 12.97

DV: 0.00

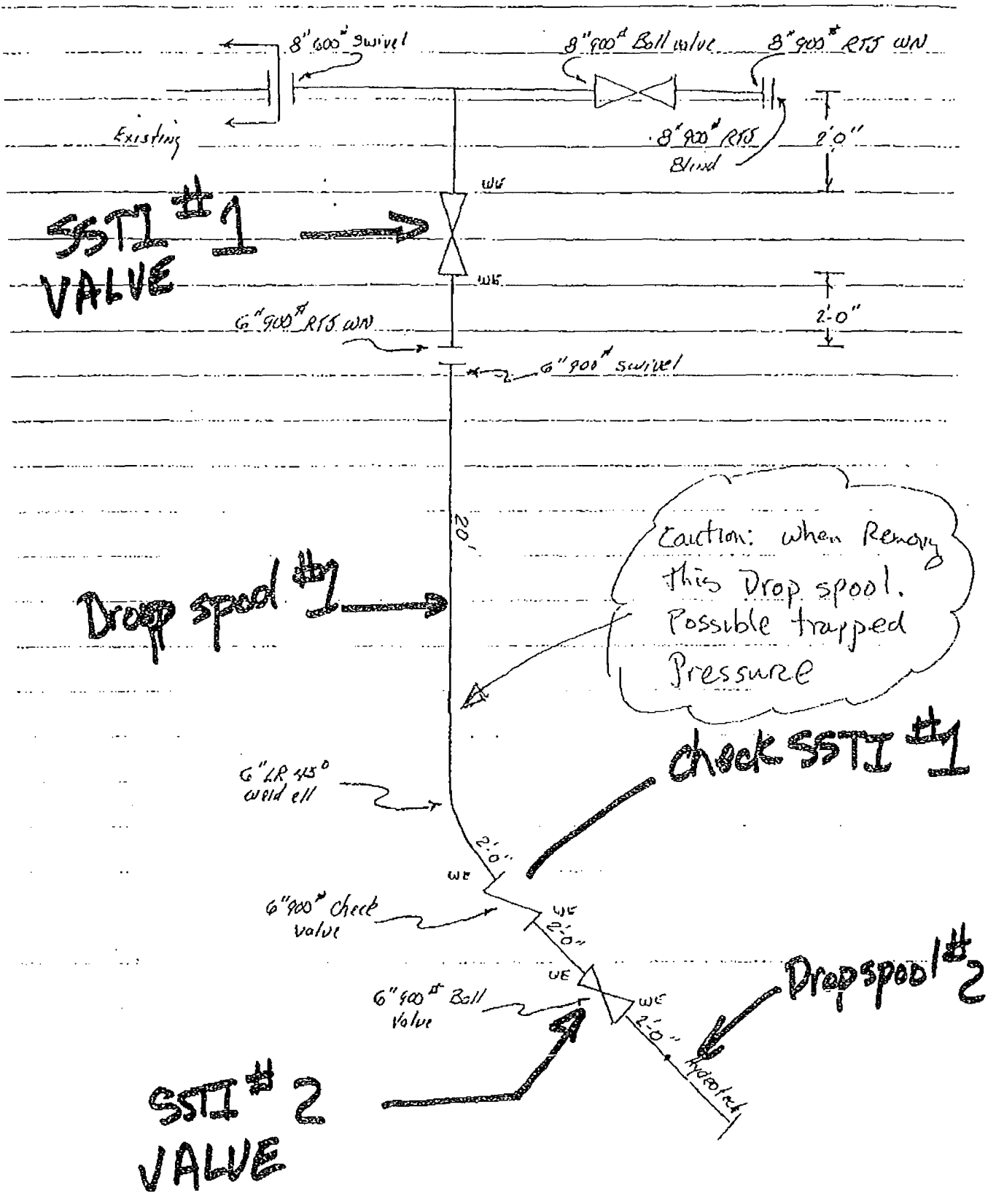
Svcs: PRIORITY OVERNIGHT
TRCK: 6629 0282 4663

SME:ML

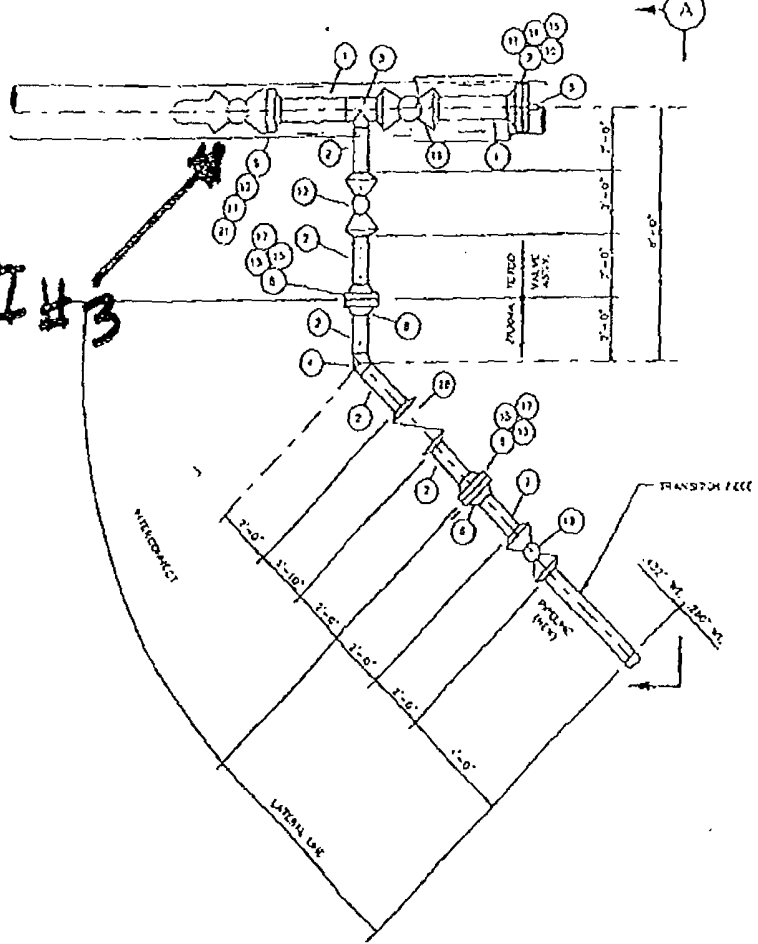
Enclosure

5300 Memorial # Suite1070 # Houston # Texas # 77007
713.652.0137 phone # 713.652.0482 fax

Zilka / Job # 1118

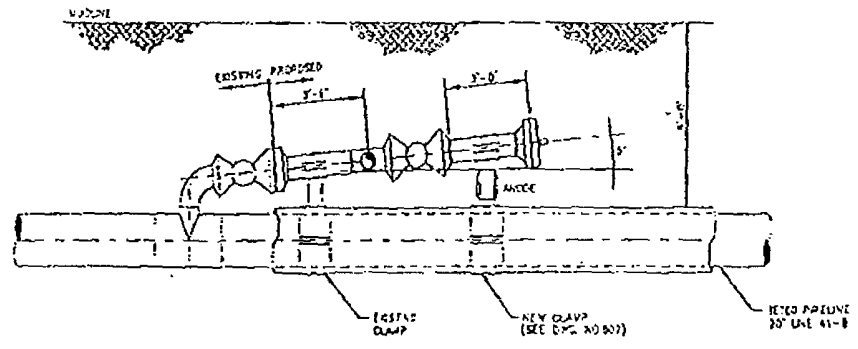


SSTI #3



MATERIAL	QTY.	SIZE
1	6"	6"
2	7"	6"
3	1	8"
4	1	6"
5	1	-
6	2	6"
7	1	8"
8	2	6"
9	1	8"
10	1	8"
11	12	-
12	12	-

PLAN
SCALE: 3/8" = 1'-0"



ELEVATION
SCALE: 3/8" = 1'-0"

- NOTE**
1. DESIGN SHALL MEET OR EXCEED CODE REGULATIONS PART 191 AND 191.1311.
 2. DESIGN PRESSURE: 1450 PSIG DESIGN FACTOR: 2.00 DESIGN TEMPERATURE: 120 DEGREES F.
 3. ALL WELDS FABRICATION SHALL BE 100% X-RAYED IN ACCORDANCE WITH API STANDARD 1104.
 4. ALL WELDS SHALL BE IN ACCORDANCE WITH API 1104.
 5. WELD END FINISH SHALL BE IN ACCORDANCE WITH THE MANUFACTURER'S INSTALLATION PROCEDURES WITH THE MANUFACTURER'S APPROVAL. SURFACE FINISH SHALL BE GRIND TO THE MANUFACTURER'S REQUIREMENTS TO ENSURE THAT THE MANUFACTURER'S DESIGN LIMITS ARE NOT EXCEEDED.
 6. PRIOR TO INSTALLING VALVE AND BRACKET MOUNT AN AREA APPROXIMATE THE SIZE OF THE OPENING TO A MINIMUM OF TWO FEET IN DIAMETER. TEST THE PROPOSED AREA WITH A PEN TEST & POSITIVE PLUCK (TEMPERATURE) FOR PROPER TEMPERATURE.
 7. CONTRACTOR TO FURNISH PIPE, IF NECESSARY, FITTINGS AND FWC. (SEE SPEC. BUT I REF. POSITION OF SPEC. IS NOT SPECIFIED).
 8. CONTRACTOR SHALL HAVE PLUMBING DONE IN ACCORDANCE WITH THE SPECIFICATIONS.
 9. HYDROSTATIC TEST SHALL BE IN ACCORDANCE TO 2101 (12-75) USE 1.5X DESIGN FOR 15 MINUTE PERIOD TO BE IN PLACE UPON POSITION TO SUPPORT TEST.
 10. CONTRACTOR TO INSTALL PLUMBING PROTECTORS AND FIT WITH RAINLINE BREAK AS PROVIDED BY THE STATE REPRESENTATIVE.
 11. COMPLETE TIE-IN ASSEMBLY SHALL BE COVERED AS PER FIELD SPECIFICATIONS.
 12. TIE-IN ASSEMBLY SHALL BE SCHEDULED FOR REMOVAL AND BE REQUIRED TO PROVIDE 1'-0" DIA. COVER USE 3/4" SLOPE WITH 1/2" DIA. HOLE FOR ASSEMBLY. SUPPORT SANDWICH SHALL BE CORRECTLY POSITIONED. COVER SANDWICH SHALL BE 2" DIA. ONLY.
 13. CORRECT SANDWICH SANDWICH SHALL BE FILLED WITH A Mixture OF 1 PART CEMENT TO 3 PARTS SAND (BY WEIGHT).
 14. BENCH SHALL BE MADE OF CLEAN WOODEN MATERIAL WITH NO NAIL ACTION. AFTER TIE-IN IS MADE, IT SHALL BE COVERED BY 8" DIA. OR 12" DIA. BUT NOT BY SANDWICH OR THIS END.
 15. SANDWICH SHALL BEGRIND SURFACE TO 220 GRIT WITH 1/2" DIA. HOLES PER SPEC.

MILLENNIUM OFFSHORE GROUP

EAST CAMERON 171
6 INCH DEPARTING GAS/CONDENSATE PIPELINE
SEGMENT NO. 11123
PROPOSED DECOMMISSIONING AND ABANDONMENT PROCEDURE

1. Mobilize Pump support vessel to East Cameron 171 "A"
2. Locate departing 6-inch riser and verify pipeline pressure.
3. 6" inch pipeline data
 - a. 7,332 feet long -- 1.39 miles
 - b. 225 bbls (9500 gallons) volume capacity
 - c. EC 171 - EC 155 SSTI
 - d. Test Pressure 2200
 - e. MAOP 1440 psi
 - f. EC 155 SSTI (coordinates x= 1,479,338' y= 97,841')
4. At EC 171, locate and cycle the departing pipeline VALVE(s) #1, #3, and #4 located downstream of the sales meter skid.
5. At EC 171, locate VALVES #1, #3 and #4 located downstream on sales meter run., close same.
6. At EC 171, blow down pressure between VALVE #1 and sales meter skid.
7. At EC 171, disconnect and remove drop spool between VALVE #1 and sales meter skid.
8. Install pig launcher on VALVE #1.
9. At EC 171, offload HP pump and hoses to platform
10. At EC 171, hook up HP pump and hoses to pig launcher taking seawater suction
11. At EC 171 platform, install (2) two 6" poly pig(s) in pipeline via pig launcher. Open VALVE #1.
12. Mobilize Dive support vessel to East Cameron 171 SSTI.
13. At EC 155 SSTI, DSV locate and excavate pipeline at SSTI.
14. At EC 155 SSTI, locate and cycle 6" tap valve (SSTI VALVE #1) at SSTI. No. turns _____
15. DSV notify EC 171 platform that 6" tap valve (SSTI VALVE #1) is closed at EC 155 SSTI.
16. At EC 155 SSTI, open 1/4 turn the 6" tap valve (SSTI VALVE #1)
17. CAUTION EC 171 platform prior to opening 6" tap valve.
18. At EC 171, check for pressure on pipeline.
19. At EC 171, utilizing HP pump, push pig(s) to tie-in valve using seawater.
 - a. The pump discharge shall be outfitted with a PSV set at 90% of the MAOP of the 6" Pipeline. (1440 psi MAOP x 90% = 1296 psi PSV set point)
20. Once pressure spike is noted at platform immediately shut down pump.
21. If pressure spike is not seen at the platform, continue pumping until approximately 113% of pipeline volume is recorded.
22. Contact DSV to close 6" tap valve. (SSTI VALVE #1) No. turns _____
23. DSV notify EC 171 that Subsea assembly valves have been closed.
24. At EC 171, bled down pipeline to zero (0) psi.
25. EC 171 platform contact DSV verify pressure on 6" pipeline has been bled to Zero.
26. At EC 171 platform, rig down HP pump and hoses.
27. Demobilize Pump Boat
28. At EC 155 SSTI, DSV close 6" SSTI valve. (SSTI VALVE #2) No. turns _____

MILLENNIUM OFFSHORE GROUP

EAST CAMERON 171
6 INCH DEPARTING GAS/CONDENSATE PIPELINE
SEGMENT NO. 11123

PROPOSED DECOMMISSIONING AND ABANDONMENT PROCEDURE

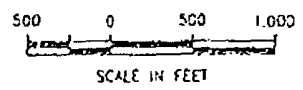
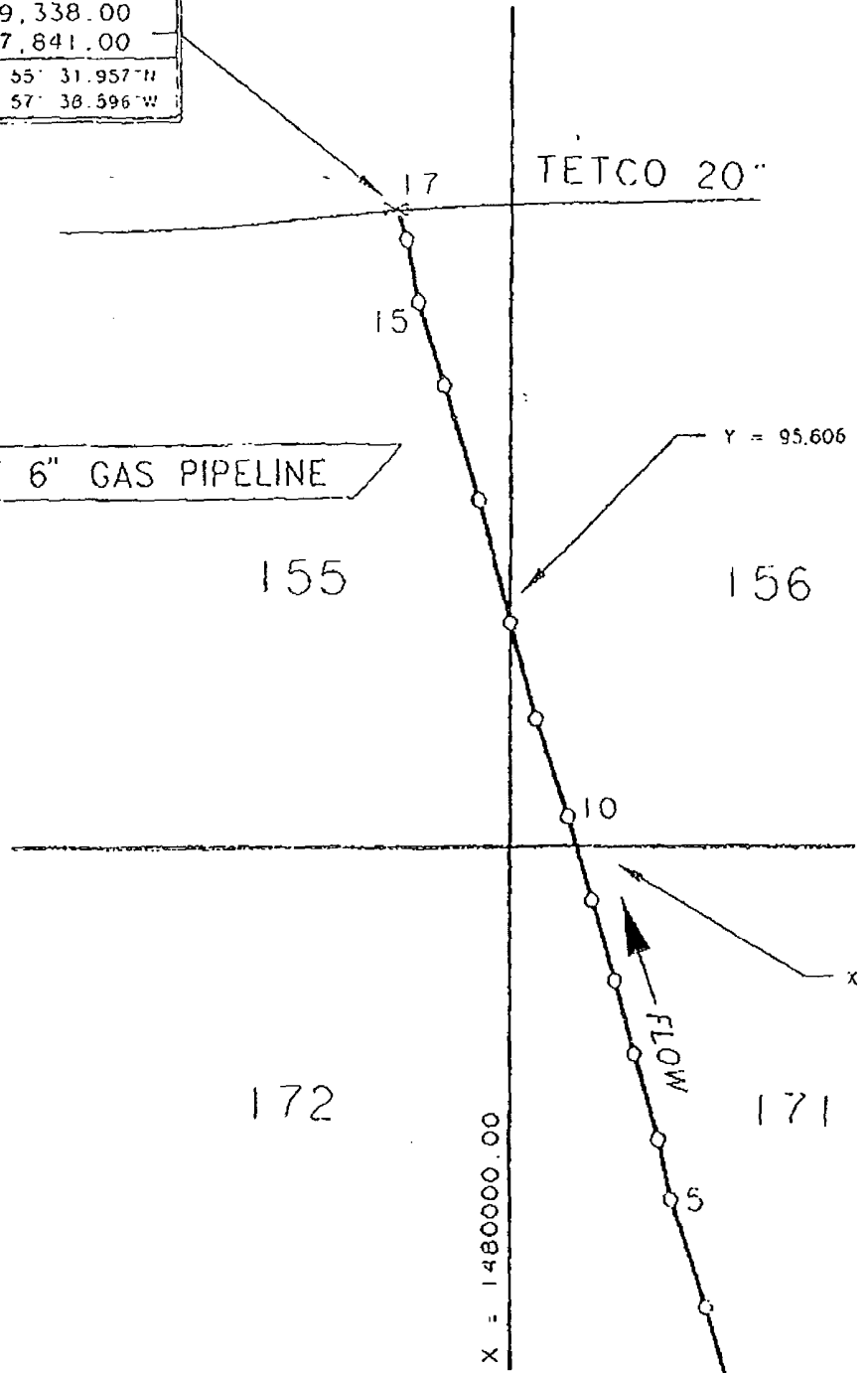
29. At EC 155 SSTI, DSV close 8" SSTI valve. (SSTI VALVE #3) No. turns _____
CAUTION this valve should be NOT be closed if there are other pipelines tied into the subsea assembly. Transmission inspector should verify this valve closure.
30. At EC 155 SSTI, remove SSTI from 6" tap valve (SSTI VALVE #1) to check valve (CHECK SSTI #1) end of pipeline (drop spool #1 on attached drawing). CAUTION there is high probability that there is pressure trapped in drop spool. Caution should be taken during the removal of drop spool.
31. At EC 155 SSTI, install a blind flange on the end of the abandoned pipeline segment at (CHECK SSTI #1).
32. At EC 155 SSTI, install blind flange on end of 6" tap valve (SSTI VALVE #1).
33. Monitor SSTI assembly for leaks for approximately for maximum Diver bottom time
34. At EC 155 SSTI, Sand bag or mat tie-in assembly and bury the abandoned end of the pipeline to 3' BML and cover 3:1 grout/sand bags, as necessary.
35. Relocate DSV to the EC 171 platform.
36. Locate and excavate pipeline riser at the base of the jacket.
37. Cut and remove 5' of the jacket riser and 20' of the pipeline segment downstream of the riser including the riser tube turn.
38. Install an expansion plug in the end of the abandoned pipeline segment.
39. Bury the abandoned end of the pipeline to 3' BML and cover 3:1 grout/sand bags, as necessary.
40. Demobilize DSV from location.

TAP	
X =	1,479,338.00
Y =	97,841.00
LAT. =	28° 55' 31.957"N
LONG. =	92° 57' 38.596"W



AS-BUILT 6" GAS PIPELINE

TETCO 20"



171-1 RISER	
X =	1,481,445.00
Y =	90,823.00
LAT. =	28° 54' 22.785"N
LONG. =	92° 57' 15.774"W

Pipeline Review Report

Review : Adjudication Review

Permit Number: P-11123 Permit Type: ROW Relinquishment Submittal Received: 07/28/2005
(Complete)

Operator : Millennium Offshore Group, Inc.

ROW Number : G16078 Reviewer Received Date: 07/29/2005 Review Completed: 07/29/2005

Segments : 11123

Reviewer : GLAZNERA

Remark :

Item	Response Text
2	<i>The corporation is qualified.</i>
3	<i>On file with MMS.</i>
5	<i>\$300,000 right-of-way grant bond on file.</i>

Pipeline Review Report

Review : Adjudication Review

Permit Number: P-11123 Permit Type: ROW Relinquishment Submittal Received: 07/28/2005
(Complete)

Operator : Millennium Offshore Group, Inc.

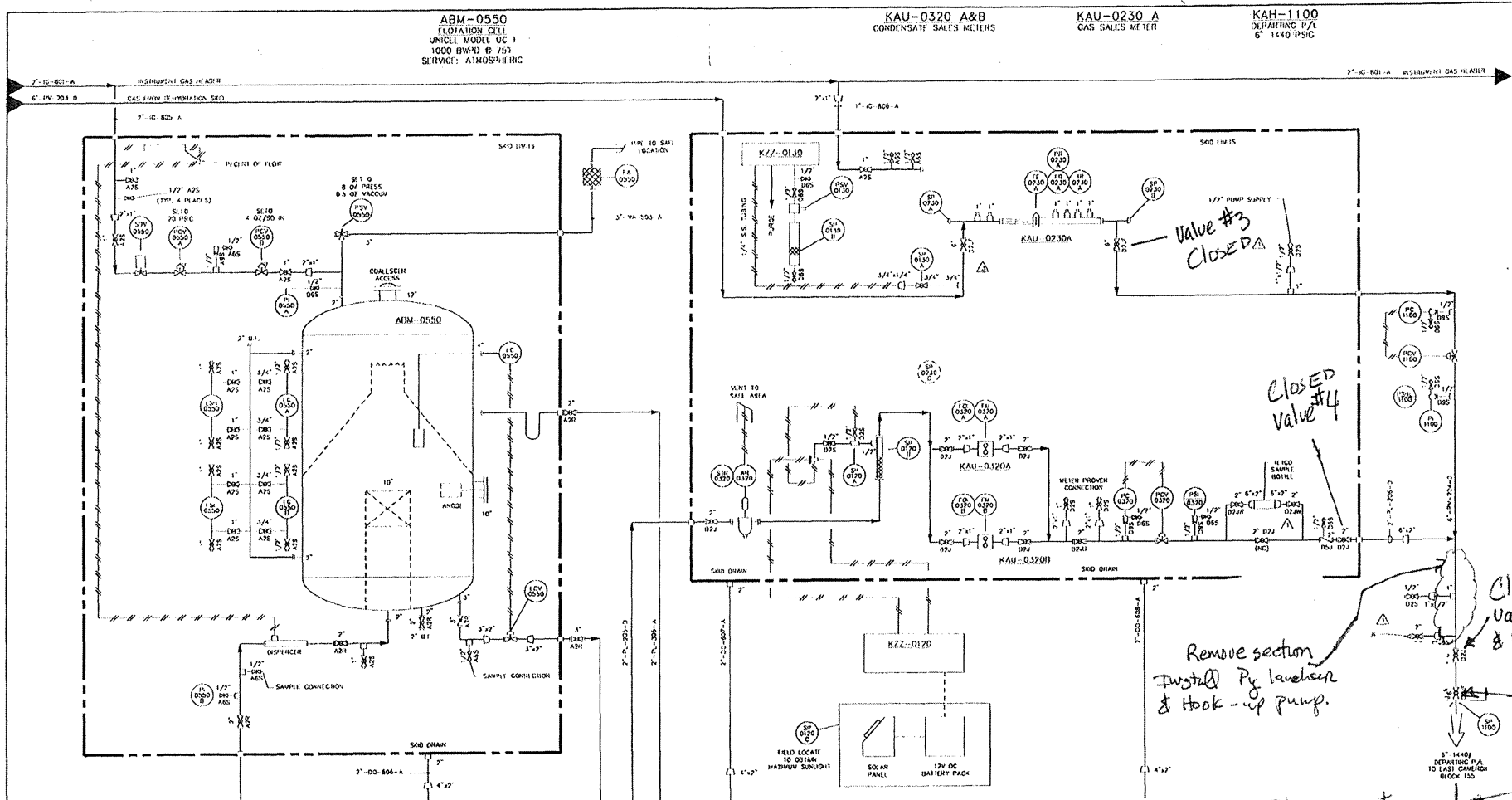
ROW Number : G16078 Reviewer Received Date: 07/29/2005 Review Completed: 07/29/2005

Segments : 11123

Reviewer : GLAZNERA

Remark :

Item	Response Text
2	<i>The corporation is qualified.</i>
3	<i>On file with MMS.</i>
5	<i>\$300,000 right-of-way grant bond on file.</i>



BEST AVAILABLE COPY

AS BUILT

Millennium Offshore Group

Atlas Engineering Inc.		PRODUCTION FACILITY LASTI CAMERON BLOCK 171 FLOTATION CELL & GAS SALES SKID MECHANICAL FLOW DIAGRAM	
APPROVED DATE TIME	DATE TIME	JOB NO. 4503	SHE. NO. 504

NO.	DESCRIPTION	DATE	BY
1	AS BUILT	12/14/98	MS
2	ADD 4" DWP @ 1500'	12/14/98	MS
3	BLIND GAS SLEET & OUTLET HEADER (5500)	12/14/98	MS
4	REQUIRE FLOTATION CELL SQUARE	12/14/98	MS
5	ADD TAPS PER 11-100	12/14/98	MS
6	ISSUED FOR CONSTRUCTION	12/14/98	MS
7	ISSUED FOR APPROVAL	12/14/98	MS
8	REVISION	12/14/98	MS