

UPDATE MG
MICRO 12006
15532

1 8 JAN 2006

In Reply Refer To: MS 5232

Mr. Jeryl L. Mohn
Sea Robin Pipeline Company
5444 Westheimer
Houston, Texas 77210-4967

Dear Mr. Mohn:

Reference is made to the following application that has been reviewed by the Minerals Management Service:

Application Type: Right-of-Way Relinquishment and Pipeline Decommissioning
(Partial)

Application Date: December 13, 2005

Work Description: Requests approval to modify pipeline by partial relinquishment of Right of Way OCS-G 01907AB by decommissioning 2000 feet of pipe in-place from a cut end near Platform "SA-1" in Block 128, which was toppled by Hurricane Rita, to a downstream cut end in Block 128 all in the South Marsh Island Area, South Addition. Requests a departure from the requirements of 30 CFR 1751(b) of pigging the pipeline. The remaining 74,692 feet of pipe becomes Segment No. 15532 from a capped end in South Marsh Island Area, South Addition, Block 128, to Eugene Island Area, South Addition, Block 330 "A" Platform.

Segment Number(s)	Size (inches)	Length (feet)	Service	From	To
12006	24	2000	Gas	Capped End South Marsh Island Area Block 128 OCS-G02587	Capped End Eugene Island Area Block 330 OCS-G02115

Assigned Right-of-Way Number: OCS-G01907AB

Effective Date of Relinquishment: December 15, 2005

Pursuant to 30 CFR 250.1000(b), approval is hereby granted to relinquish a portion of this right of way.

Pursuant to 30 CFR 250.1751, approval is hereby granted to decommission the associated section of this pipeline, and in accordance with 30 CFR 250.1010, the requirement that this section of pipeline be removed is hereby waived.

Pursuant to 30 CFR 250.142, your departure from pigging the pipeline is hereby approved.

The remaining portion(s) of Right-of-Way will be operated and maintained as follows:

One 24-inch pipeline 14.15 miles in length to transport gas from a capped end in Block 128, through Blocks 127 and 142, in the South Marsh Area, South Addition, through Blocks 312, 333, 313, 332, and 331, to Block 330 A Platform in the Eugene Island Area, South Addition.

Assigned Right-of-Way Number: OCS-G01907AB

Assigned Segment Number: 15532

Assigned MAOP (psi): 1306

MAOP Determination : Surface Segment Tie-in

Approval is subject to the following conditions:

- 1.) All pipeline severing and cutting operations shall be conducted during daylight hours only.
- 2.) Your completion report shall include digital pipeline location data as per NTL 98-20 and certified plats for all pipeline decommissions and modifications.
- 3.) You are reminded to perform a leak test for at least two hours during daylight hours in accordance with NTL 2005-G20. You shall provide areal surveillance of the pipeline route during the leak test of this pipeline.

Sea Robin Pipeline Company must complete the decommissioning operations within 60 days of the date of this letter.

Sincerely,

Donald C. Howard
Regional Supervisor
Field Operations

bcc: 1502-01 Segment No. 12006, ROW OCS-G01907AB (MS5232)
1502-01 ROW OCS-G01907AB (Microfilm) (MS 5033)
MS 5232 Cartography

PROJECT CONSULTING SERVICES®, INC.

3300 WEST ESPLANADE AVE., S., SUITE 500
METAIRIE, LOUISIANA 70002-3447
(504) 833-5321 Fax (504) 833-4940
www.projectconsulting.com

1202
15532
Micko

Amsh 3

Date: January 12, 2006

Delivery To: Mr. Donald C. Howard, Regional Supervisor
United States Department of the Interior
Minerals Management Service
Gulf of Mexico OCS Region
1201 Elmwood Park Boulevard
New Orleans, Louisiana 70123-2394

Minerals Management Service
RECEIVED

JAN 12 2006

Office of Field Operations
Pipeline Section

Attention: Mr. Alex Alvarado

Subject: Response to a "Request for Clarification #3" to the Application for the Partial Decommissioning and Relinquishment and Modification of Sea Robin's 24-inch Natural Gas Right-of-Way Pipeline, Segment No. 12006, OCS-G-01907AB, Gulf of Mexico, Federal Waters, Offshore Louisiana.

Contents: Two (2) documents listed as follows:

1. MMS Permit Application Clarification #3 Response
2. EI 330A Safety Flow Diagram (Revision 23)

Sincerely,

Project Consulting Services



Michael Vining

Houston
11200 Westheimer, Suite 330
Houston, TX 77042-3229
(713) 952-7380 Fax (713) 952-7082

Birmingham
One Perimeter Park S., Suite 330 N.
Birmingham, AL 35243
(205) 967-0055 Fax (205) 967-3999

Atlanta
2110 Powers Ferry Road, Suite 225
Atlanta, GA 30339
(770) 618-1020 Fax (770) 618-1025

Sea Robin SMI 128 24-inch Pipeline Modification (Seg. 12006)
MMS Permit Application Clarification #3 Response

1. Segment 12006 MAOP
 - Sea Robin has elected to reduce the MAOP of Segment 12006 from 1440 PSIG to 1306 PSIG.
2. EI 330 "A" Platform Safety Schematic
 - A Safety Flow Diagram of the EI 330 "A" platform is included in the package for reference. (Reference Drawing 8429-153 Rev 23)
 - The referenced drawing has been revised to illustrate the revised MAOP of 1306 PSIG on Pipeline Segment 12006.
 - The referenced drawing has been revised to illustrate the respective pressure specification change locations on the EI 330 "A" Platform.
 -
3. "FC" Notation
 - The "FC" notation on the EI 330 "A" Platform Safety Schematic is an abbreviation for "Fail Close".

KAQ-3003 INCOMING PIPELINE FROM E1330"D" 6" MAWP: 1440 PSIG SEGMENT: #7741 OUT OF SERVICE

MBF-3003 PIPELINE SCRUBBER 36"OD x 9'-0"S/S MAWP: 1440 PSIG @ 100F

MAF-0550 GLYCOL CONTACTOR 66"OD x 20'-0"S/S MAWP: 1440 PSIG @ 100F OUT OF SERVICE

HBC-0560 GAS/GLYCOL EXCHANGER OUT OF SERVICE

PAX-1600 PIPELINE PUMP NO. 1 MDP: 150 PSIG

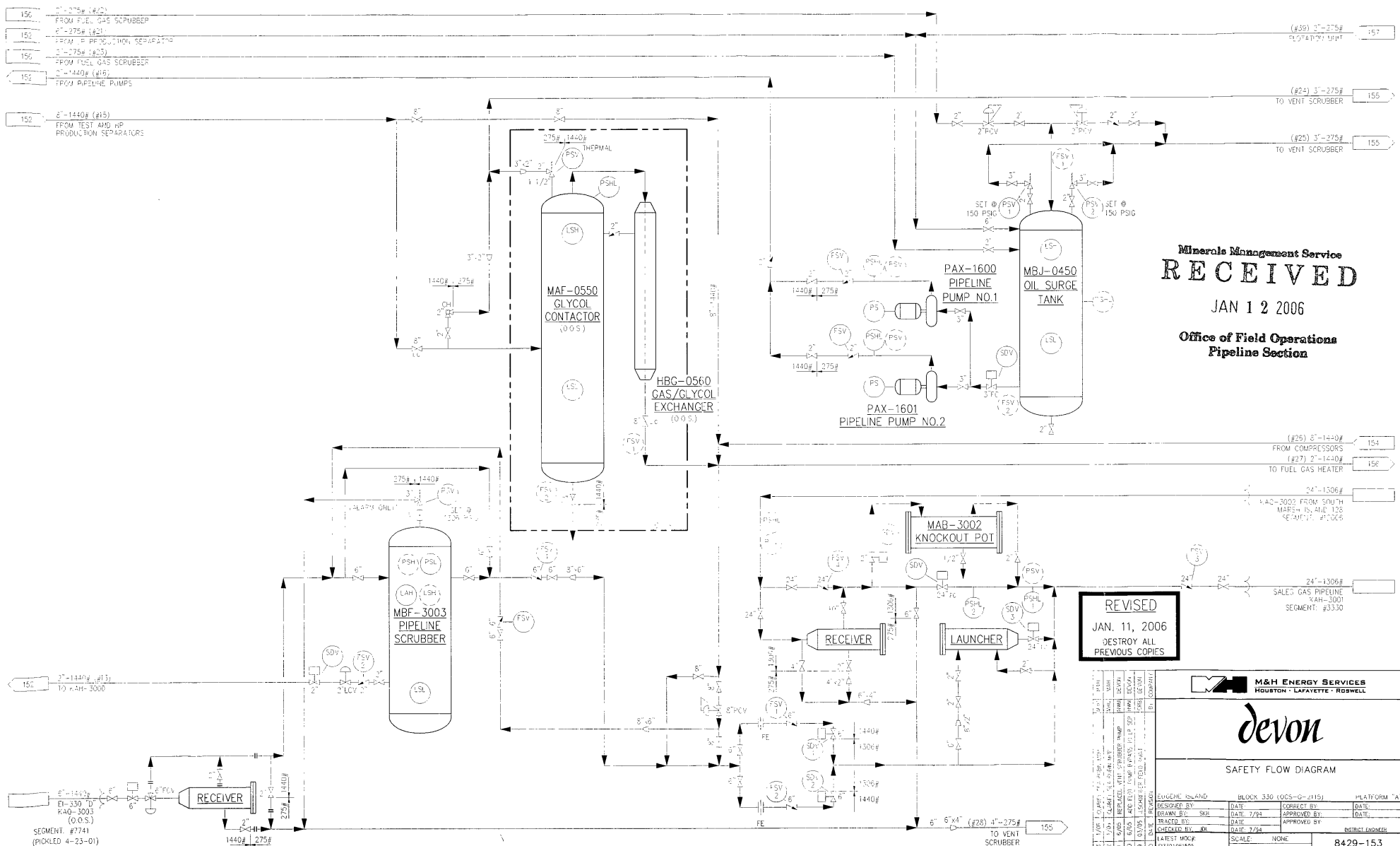
PAX-1601 PIPELINE PUMP NO. 2 MDP: 150 PSIG

MBJ-0450 OIL SURGE TANK 54"OD x 20'-0"S/S MAWP: 150 PSIG @ 275F

MAB-3002 KNOCKOUT POT 6 5/8"OD x 5'-0"S/S MAWP: 1306 PSIG

KAH-3001 DEPARTING SALES GAS PIPELINE 24" MAOP: 1306 PSIG SEGMENT: #3330

KAO-3002 INCOMING PIPELINE FROM SMI 128 24" MAOP: 1306 PSIG SEGMENT: #1206



Minerals Management Service
RECEIVED
 JAN 12 2006
 Office of Field Operations
 Pipeline Section

REVISED
 JAN. 11, 2006
 DESTROY ALL
 PREVIOUS COPIES

M&H ENERGY SERVICES
 HOUSTON • LAFAYETTE • ROSSWELL

devon

SAFETY FLOW DIAGRAM

DESIGNED BY	DATE	CHECKED BY	DATE
DRAWN BY	DATE	APPROVED BY	DATE
TRACED BY	DATE	APPROVED BY	DATE
CHECKED BY	DATE	APPROVED BY	DATE
LATEST WORK	SCALE	NONE	8429-153
PROJECT NO.	SHEET	4 of 8	01/04/06 AT 09:30 BY: JG

BEST AVAILABLE COPY

PROJECT CONSULTING SERVICES®, INC.

3300 WEST ESPLANADE AVE., S., SUITE 500
METAIRIE, LOUISIANA 70002-3447
(504) 833-5321 Fax (504) 833-4940
www.projectconsulting.com

12006
15532
micro

Amend 2

Date: January 5, 2006

Delivery To: Mr. Donald C. Howard, Regional Supervisor
United States Department of the Interior
Minerals Management Service
Gulf of Mexico OCS Region
1201 Elmwood Park Boulevard
New Orleans, Louisiana 70123-2394

Minerals Management Service
RECEIVED

JAN 05 2006

Attention: Mr. Alex Alvarado

Office of Field Operations
Pipeline Section

Subject: Response to a "Request for Clarification #2" to the Application for the Partial Decommissioning and Relinquishment and Modification of Sea Robin's 24-inch Natural Gas Right-of-Way Pipeline, Segment No. 12006, OCS-G-01907AB, Gulf of Mexico, Federal Waters, Offshore Louisiana.

Contents: Two (2) documents listed as follows:

1. MMS Permit Application Clarification #2 Response
2. EI 330A Safety Flow Diagram (Revised)

Sincerely,

Project Consulting Services



Michael Vining

Houston
11200 Westheimer, Suite 330
Houston, TX 77042-3229
(713) 952-7380 Fax (713) 952-7082

Birmingham
One Perimeter Park S., Suite 330 N.
Birmingham, AL 35243
(205) 967-0055 Fax (205) 967-3999

Atlanta
2110 Powers Ferry Road, Suite 225
Atlanta, GA 30339
(770) 618-1020 Fax (770) 618-1025

Sea Robin SMI 128 24-inch Pipeline Modification (Seg. 12006)
MMS Permit Application Clarification #2 Response

1. EI 330 "A" Platform Safety Schematic
 - A Safety Flow Diagram of the EI 330 "A" platform is included in the package for reference. (Reference Drawing 8429-153 Rev 1)
 - The referenced drawing has been revised to illustrate the correct MAOP on Pipeline Segment 3330.
 - The referenced drawing has been revised to illustrate the pressure specification change location on the EI 330 "A" Platform.

PROJECT CONSULTING SERVICES®, INC.

3300 WEST ESPLANADE AVE., S., SUITE 500
METAIRIE, LOUISIANA 70002-3447
(504) 833-5321 Fax (504) 833-4940
www.projectconsulting.com

12050
15532
MICKO

Amend 1

Date: December 27, 20005

Delivery To: Mr. Donald C. Howard, Regional Supervisor
United States Department of the Interior
Minerals Management Service
Gulf of Mexico OCS Region
1201 Elmwood Park Boulevard
New Orleans, Louisiana 70123-2394

Minerals Management Service
RECEIVED

DEC 27 2005

Office of Field Operations
Pipeline Section

Attention: Mr. Alex Alvarado

Subject: Response to a "Request for Clarification" to the Application for the Partial Decommissioning and Relinquishment and Modification of Sea Robin's 24-inch Natural Gas Right-of-Way Pipeline, Segment No. 12006, OCS-G-01907AB, Gulf of Mexico, Federal Waters, Offshore Louisiana.

Contents: Three (3) documents listed as follows:

1. MMS Permit Application Clarification Response
2. PER-02 Rev C Drawing
3. EI 330A Safety Flow Diagram

Sincerely,

Project Consulting Services



Michael Vining

Houston
11200 Westheimer, Suite 330
Houston, TX 77042-3229
(713) 952-7380 Fax (713) 952-7082

Birmingham
One Perimeter Park S., Suite 330 N.
Birmingham, AL 35243
(205) 967-0055 Fax (205) 967-3999

Atlanta
2110 Powers Ferry Road, Suite 225
Atlanta, GA 30339
(770) 618-1020 Fax (770) 618-1025

Sea Robin SMI 128 24-inch Pipeline Modification (Seg. 12006)
MMS Permit Application Clarification Responses

1. Pipeline Flooding

- Sea Robin plans to facilitate the flooding process by partially severing the pipeline in three (3) close proximity locations. These three (3) cut locations will be made as close as is safely possible to the damaged SMI 128 "SA-1" platform. (Reference Drawing PER-02 Rev C) Each partial severing location will be within the approximate 20 ft. segment of pipe to be removed for onshore disposal.
- Once the partial severing is completed, and the pipeline flooding has begun, the construction vessel will relocate to the SMI 128 "Cut Point" and begin preparing the pipeline for the 24-inch ANSI 900 Flexi-forge installation. This preparation will involve removing the concrete and corrosion coating, checking the wall thickness at several points around the pipe in four (4) locations, and performing an ovality check at the four (4) locations.
- Upon completing the 24-inch ANSI 900 Flexi-forge preparation procedure, the divers will partial sever the pipeline at the SMI 128 "Cut Point" to ensure that the pipeline has completed the flooding process, and equilibrium has been achieved. If the pipeline has not completed flooding, and further activities are deemed unsafe, the divers will standby until the pipeline equilibrium has been achieved.

2. Pollution Domes & Daylight Operations

- Sea Robin intends to utilize pollution domes at each "cut" and "partial severing" location to minimize the potential of a condensate leaking into the environment.
- Sea Robin will attempt to perform all "cutting" and "partial severing" operations during daylight hours.

3. Plugging

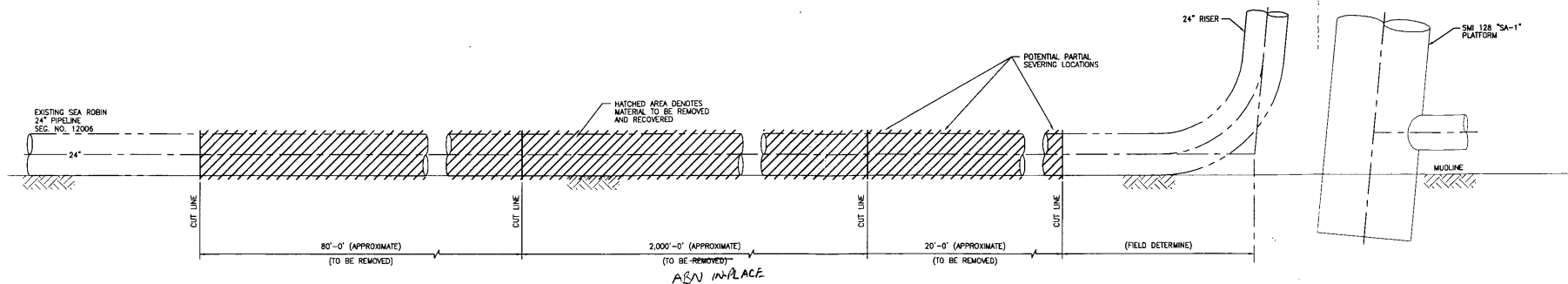
- Sea Robin will utilize plumber's plugs, or equivalent, when pipeline plugging operations are performed (Reference Drawing PER-02)

4. Concrete Mat Cover

- Sea Robin will cover the 24-inch ANSI 900 fitting attached to the 24-inch pipeline with concrete mats. The edges of the concrete mats will be buried. (Reference Drawing PER-02)
- Sea Robin will cover each cut and plugged end of the pipeline, except the pipeline end attached to the riser which will be removed by others. The edges of the concrete mats will be buried. (Reference Drawing PER-02).

5. EI 330 "A" Platform Safety Schematic

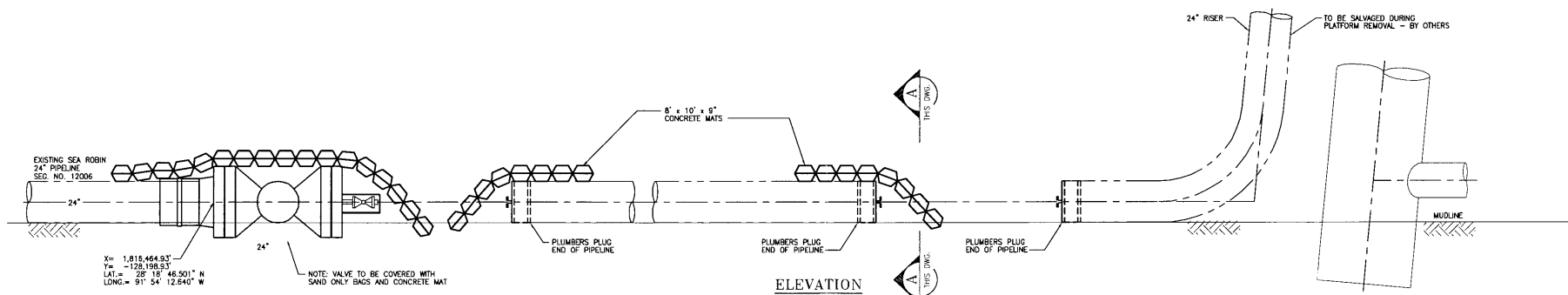
- A Safety Flow Diagram of the EI 330 "A" platform is included in the package for reference. (Reference Drawing 8429-153)



ELEVATION

EXISTING 24" PIPELINE

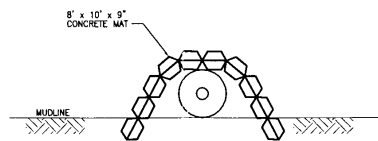
SCALE: 3/8" = 1'-0"



ELEVATION

24" AFTER MODIFICATION

SCALE: 3/8" = 1'-0"




SECTION

SCALE: 3/8" = 1'-0"

NOTES:

1. EDGES OF CONCRETE MAT TO BE BURIED.

		SCALE: AS NOTED		SOUTH MARSH ISLAND BLOCK 128 24" O.D. PIPELINE MODIFICATION DETAILS		 A Southern Union Company	
		DRAWN BY: G.J.D.		10-27-05			
		DRAFT. CHK BY: P.J.T.		10-31-05			
ISSUED FOR PERMIT		12-21-05	DES. ENGR.		LOC. FEDERAL WATERS, OFFSHORE LOUISIANA		
ISSUED FOR PERMIT		11-18-05	SUPV. ENGR.		YEAR: 2005		
PRELIMINARY, FOR CLIENT REVIEW		11-17-05			W.O.		
NO.	REVISION DESCRIPTION	DATE	DATE	DATE	DATE	DWG.	PER-02
A	ISSUED FOR PERMIT	12-21-05					
B	ISSUED FOR PERMIT	11-18-05					
A	PRELIMINARY, FOR CLIENT REVIEW	11-17-05					
							REV. C





12006
MICKO
5444 Westheimer Road
Houston, TX 77056-5306
P.O. Box 4967
Houston, TX 77210-4967
713.989.7000

December 13, 2005

Mr. Donald C. Howard, Regional Supervisor
United States Department of the Interior
Minerals Management Service
Gulf of Mexico OCS Region
1201 Elmwood Park Boulevard
New Orleans, Louisiana 70123-2394

Minerals Management Service
RECEIVED

DEC 15 2005

Office of Field Operations
Pipeline Section

Attention: Mr. Alex Alvarado

Subject: Application for the Partial Decommissioning and Relinquishment and Modification of Sea Robin's 24-inch Natural Gas Right-of-Way Pipeline, Segment No. 12006, OCS-G-01907AB, Gulf of Mexico, Federal Waters, Offshore Louisiana

Gentlemen:

Pursuant to the authority granted in 43 U.S.C. 1334 (a)(2) and (e), and in compliance with all other applicable regulations contained in Title CFR 49, Part 192, and Title 30 CFR, Part 250, Subparts J and Q, and NTL No. 2005-G20, Sea Robin Pipeline Company (Sea Robin) has prepared this application, in quadruplicate, for the partial decommissioning and relinquishment and modification of the subject 24-inch natural gas pipeline, which presently extends from the South Marsh Island 128 "SA-1" platform to the Eugene Island 330 "A" platform. Sea Robin agrees that said right-of-way modifications and partial decommissioning and relinquishment will be subject to the terms and conditions of said regulations.

In support of our application and for your review and use, the following maps, drawings, and documents have been enclosed herewith and made a part hereof:

- 1) Modification Procedures; Attachment "A"
- 2) South Marsh Island Block 128 24" O.D. Pipeline Modification Vicinity Map, Drawing No. PER-01
- 3) South Marsh Island Block 128 24" O.D. Pipeline Modification Details, Drawing No. PER-02

The coordinates for the South Marsh Island 128 "SA-1" and Eugene Island 330 "A" platforms, and the decommissioning and relinquishment cut point are provided below

Mr. Donald C. Howard, Regional Supervisor

December 13, 2005

Page 2

with reference to the Louisiana (Lambert) Coordinate System, South Zone, NAD 27, Clarke Spheroid 1866:

Devon Energy Production's "SA-1" Platform:	X = 1,814,870.60 feet
(SMI Area Block 128)	Y = -126,783.39 feet
	Lat. = 28° 19' 0.433" N
	Lon. = 91° 54' 30.550" W

Devon Energy Production's "A" Platform:	X = 1,883,039.56 feet
(EI Area Block 330)	Y = -155,555.15 feet
	Lat. = 28° 14' 18.420" N
	Lon. = 91° 41' 47.112" W

Decommissioning and Relinquishment:	X = 1,816,464.93 feet
(Cut Point SMI Area Block 128)	Y = -128,198.93 feet
	Lat. = 28° 18' 46.501" N
	Lon. = 91° 54' 12.640" W

During the passage of Hurricane Rita, Devon Energy's South Marsh Island 128 "SA-1" platform was toppled and Segment No. 12006 was severely damaged. Segment No. 12006 is currently out of service and assumed to be void of seawater. The condition of the pipeline will be verified by a subsea investigation in the near future.

Due to the safety concerns associated with performing work activities near the toppled platform, Sea Robin cannot purge the pipeline of product prior to decommissioning and is hereby asking for a waiver from the requirements of §250.1751 (b) and (c), which states that the pipeline to be decommissioned shall be pigged and flushed. The pipeline will be flooded from a location near the South Marsh Island 128 "SA-1" platform, at the upstream and deepest end of the pipeline. As the pipeline floods, the hydrocarbons will be compressed toward the Eugene Island 330 "A" platform and vented.

At a location along the pipeline 2,000 feet away from the South Marsh Island 128 "SA-1" platform, the pipeline will be cut and approximately 80 feet of pipe will be removed and brought to the surface for disposal onshore. The pipeline end west of the Eugene Island 330 "A" platform will be fitted with a 24-inch ANSI Class 900 flanged end connector, flanged ball valve, and tapped blind flange. At South Marsh Island 128 "SA-1" the pipeline will be cut as close to the base of the riser as is safely possible. At this cut point approximately 20 feet of pipe will be removed and brought to the surface for disposal onshore. The pipeline segment (approximately 2,000 feet in length) will be filled with seawater, plugged, covered, and decommissioned and relinquished in place. Both ends of the decommissioned and relinquished pipeline section will be plugged and covered in accordance with §250.1751(e) and (f). The remaining riser tie-in piping and riser will be plugged and left as is and salvaged with the South Marsh Island 128 "SA-1" platform, to be done by others.

Mr. Donald C. Howard, Regional Supervisor

December 13, 2005

Page 3

In accordance with §250.1015(a), the purpose of this right-of-way pipeline modification is to return Segment No. 12006 to service to allow all input suppliers to supply product to the EI 330 platform.

Sea Robin has plans to install a new 24-inch pipeline segment between the Segment No. 12006 modified pipeline end and either the South Marsh Island 128 "A" platform or the South Marsh Island 128 "SA-2" platform as soon as materials and vessels can be secured. This proposed 24-inch segment will be permitted under a separate cover letter. Sea Robin intends to return Segment No. 12006 to service immediately after the modification is completed and input suppliers can be brought back online.

The proposed modification is tentatively scheduled for December 26, 2005, with the time required estimated at 7 days. Sea Robin's shore base of operations during the modification will be Erath, Louisiana.

Sea Robin hereby agrees to keep open at all reasonable times for inspection by the Minerals Management Service the area covered by this right-of-way modification and all records relative to the pipeline modification.

Additionally, Sea Robin expressly agrees that if any site, structure, or object of historical or archaeological significance should be discovered during the conduct of any modification operations within the permitted right-of-way, we shall report immediately such findings to the Manager, Gulf of Mexico OCS Region, and make every reasonable effort to preserve and protect the cultural resource from damage until said Manager has given directions as to its preservation.

Contacts on technical points or other information:

Jim A. Messman
Senior Project Manager
Sea Robin Pipeline Company
5444 Westheimer, RM WT1056
Houston, TX 77056
Telephone: (713) 989-7454
Fax: (713) 989-1198

Michael A. Vining
Project Engineer
Project Consulting Services, Inc.
3300 West Esplanade Ave. S., Suite 500
Metairie, Louisiana 70002
Telephone: (504) 833-5321
Fax: (504) 833-4940

Mr. Donald C. Howard, Regional Supervisor

December 13, 2005

Page 4

If the above information meets with your approval, we would appreciate your issuance of the necessary permit for the modification and partial decommissioning and relinquishment of the original right-of-way at your earliest convenience. Inquiries concerning this application may be directed to either Mr. Messman or Mr. Vining as indicated above.

Sincerely,

Sea Robin Pipeline Company

A handwritten signature in black ink, appearing to read 'Jeryl Mohn', written in a cursive style.

Jeryl L. Mohn

Senior Vice President

Attachments

Cc: Butch Till
Bobby McDonald

ATTACHMENT "A"

Sea Robin
South Marsh Island Area Block 128 to Eugene Island Area Block 330
24-inch Natural Gas Pipeline Modification and
Partial Decommissioning and Relinquishment Procedures

1. The following is a sequence of events to be used for the modification and partial decommissioning and relinquishment of Sea Robin's 24-inch O.D. natural gas pipeline, Right of Way OCS-G 01907AB, Segment No. 12006. The pipeline begins on the South Marsh Island 128 "SA-1" (SMI 128 "SA-1") platform and extends to the Eugene Island 330 "A" (EI 330 "A") platform.
2. The coordinates for the South Marsh Island 128 "SA-1" and Eugene Island 330 "A" platforms, and the decommissioning and relinquishment cut point are provided below with reference to the Louisiana (Lambert) Coordinate System, South Zone, NAD 27, Clarke Spheroid 1866:

Devon Energy Production's "SA-1" Platform: (SMI Area Block 128)	X = 1,814,870.60 feet Y = -126,783.39 feet Lat. = 28° 19' 0.433" N Lon. = 91° 54' 30.550" W
--	--

Devon Energy Production's "A" Platform: (EI Area Block 330)	X = 1,883,039.56 feet Y = -155,555.15 feet Lat. = 28° 14' 18.420" N Lon. = 91° 41' 47.112" W
--	---

Decommissioning and Relinquishment: (Cut Point SMI Area Block 128)	X = 1,816,464.93 feet Y = -128,198.93 feet Lat. = 28° 18' 46.501" N Lon. = 91° 54' 12.640" W
---	---

3. The MAOP of the modified pipeline will remain 1,440 psig.
4. Valves and Flanges

All new valves and flanges will be 24-inch ANSI 900 Class. All flanges will be RTJ. The rated design pressure of all new flanges and valves associated with Sea Robin's proposed pipeline modifications is 2,220 psig. This is based upon the pressure-temperature ratings given in ASME/ANSI B16.5 Pipe Flanges and Flanged Fittings, API 6D, Specification for Pipeline Valves, and ASME B16.34,

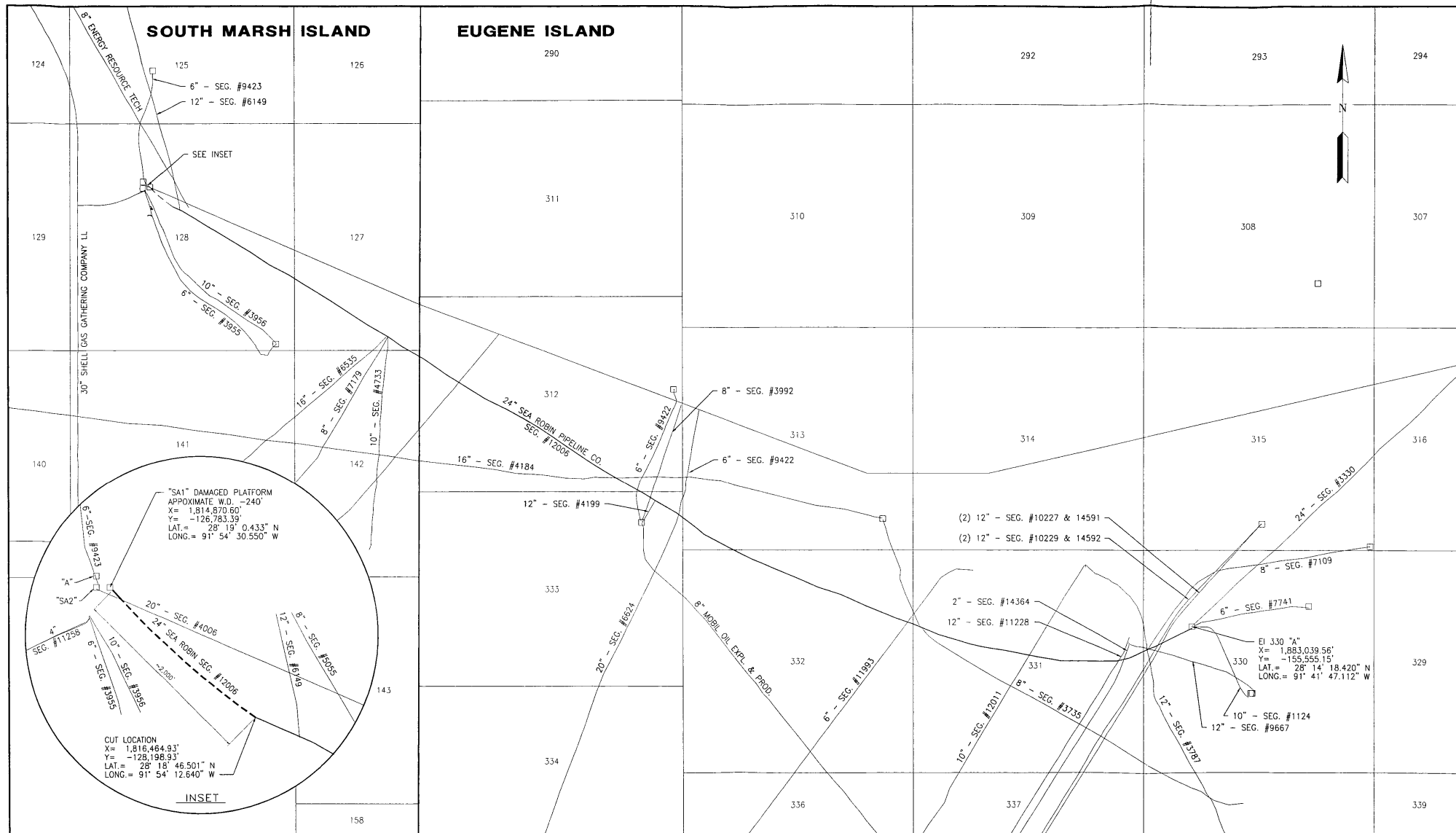
Valves - Flanged, Threaded, and Welding End, for ANSI 900 Class with a maximum design temperature of 100 °F. The existing pipeline system is rated for ANSI 600 Class.

4. Segment No. 12006 Modification Procedure


- a. From the South Marsh Island 128 end of the pipeline, approximately 2,000 feet of pipe will be decommissioned and relinquished in place. The remaining pipeline end will be modified to accommodate Sea Robin's proposed future 24-inch tie-in that will be routed to either the SMI 128 "A" platform or the SMI 128 "SA-2" platform. This proposed 24-inch tie-in will be permitted under a separate cover letter. Currently the 24-inch pipeline is out of service and assumed to be void of seawater. See Drawing No. PER-2 for details on items (b) through (v) below.
- b. A DSV will be mobilized to each subsea tie-in location to close, or ensure closed, all valves preventing the flow of product or water from each input pipeline along the SMI 128 24-inch pipeline.
- c. Sea Robin personnel shall close valves necessary to isolate pipeline from any active pressure sources. All required valves will be secured by means of platform LO/TO procedures.
- d. Sea Robin personnel will vent any residual pressure remaining in the pipeline at the top of jacket on the EI 330 "A" platform. The vent valve shall be locked open to ensure no pressure buildup during this and subsequent steps. Venting pressure at the SMI 128 "SA-1" platform is prohibited due to the severity of its damage.
- e. The DSV will be relocated near the SMI 128 "SA-1" platform site and will partially sever the pipeline in several locations, each in close proximity, for flooding. The flooding will compress any hydrocarbons toward the EI 330 "A" platform and away from the cut locations. Precautions will be taken to capture any residual hydrocarbons. The pipeline will not be completely severed at these locations as a precaution to minimize any safety concerns, such as the pipe twisting or equipment jamming at the cut location. Divers will verify pipeline has reached equilibrium with ambient pressure before proceeding to next step.
- f. The DSV will relocate approximately 2,000 feet east along the pipeline to the proposed cut point.

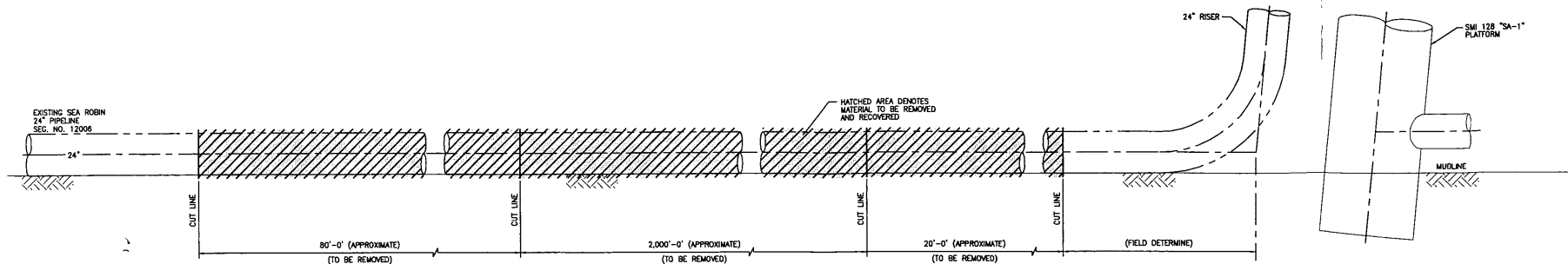
- g. Divers will cut approximately 80 feet of pipeline to be brought to the surface for onshore disposal. Precautions will be taken to capture any residual hydrocarbons.
- h. A 24-inch ANSI 900 Flexiforge end connector will be installed on the EI 330 "A" pipeline end and the SMI 128 "SA-1" pipeline end will be plugged. The plugged pipeline end will be covered with concrete mats. The edges of the concrete mats will be buried.
- i. A 24-inch ANSI 900 flanged ball valve will be installed on the 24-inch ANSI 900 Flexiforge end connector.
- j. A subsea pig receiver will be installed onto the 24-inch ANSI 900 flanged ball valve and discharge filtration equipment will be set up on the DSV positioned at the cut location in SMI 128.
- k. The pipeline will be pigged with product from EI 330 "A" to remove all water and residual hydrocarbons. The discharge water will be treated using filter separation equipment.
- l. After pigging and filtering operations are complete, the 24-inch ANSI 900 flanged ball valve on the end of the 24-inch pipeline will be closed and the pig receiver in SMI 128 will be removed.
- m. The 24-inch ANSI 900 flanged ball valve will be opened. All valves previously LO/TO on the EI 330 "A" platform will be returned to normal operating conditions.
- n. A 24-inch ANSI 900 tapped blind flange will be installed on the 24-inch ANSI 900 flanged ball valve in SMI 128.
- o. After all connections have been completed, Sea Robin will conduct a two (2) hour leak test by visual observation of all flanged connections. The test medium will be natural gas. The test will be conducted under system operating pressure, which is expected to be approximately 1,306 psig. However, actual line pressure may vary dependent upon system operating conditions at the time of the test.
- p. After completion of the leak test, the 24-inch ANSI 900 Flexiforge end connector, ball valve, and tapped blind flange will be covered with sand only bags with a top cover of concrete mats. The edges of all concrete mats will be buried below the mudline. All sand bags exposed above the mudline will be sloped with a 1:3, rise to run ratio.

- q. The DSV will open all valves allowing flow of product from each input pipeline along the SMI 128 24-inch pipeline. Segment No. 12006 will now be back in service.
- r. The DSV will be mobilized near the SMI 128 "SA-1" platform site.
- s. Divers will sever the pipeline as close as is safely possible to the damaged SMI 128 "SA-1" platform. Precautions will be taken to capture any residual hydrocarbons.
- t. Approximately 20 feet of line pipe will be removed and brought to the surface for onshore disposal. Plumber's plugs will be installed at the cut points. A concrete mat will be placed over the end of the decommissioned and relinquished segment. The edges of the concrete mat will be buried.
- u. After plugging and installation of the cover mat, the riser and line pipe lying from the cut point back to the damaged SMI 128 "SA-1" platform will be left as is and salvaged with the platform. This work will be done by others.
- v. The DSV will be demobilized.



NOTES:
 1. ALL COORDINATES SHOWN ARE LAMBERT ZONE; LOUISIANA SOUTH
 GEODETIC DATUM: NAD 27, ELLIPSOID: CLARK1866.

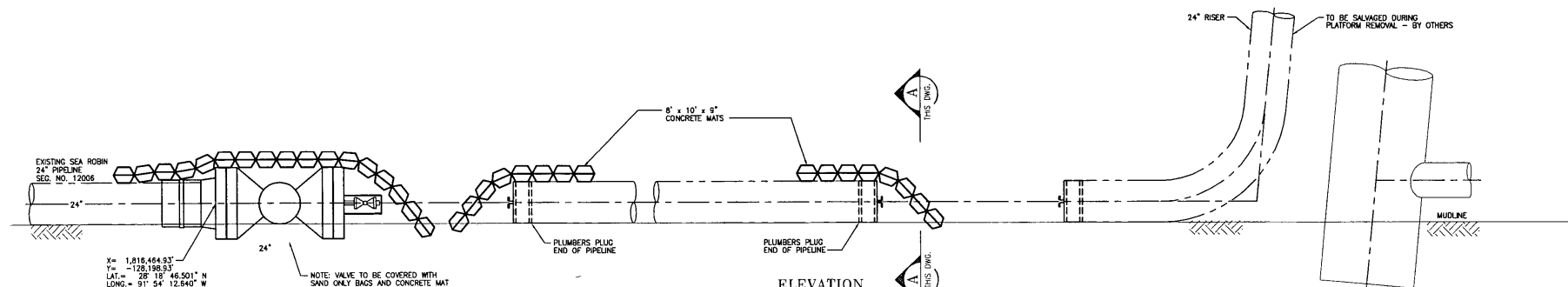
				SCALE: 1" = 3,000'				SOUTH MARSH ISLAND BLOCK 128			
				DRAWN BY: S.E.M.		10-31-05		24" O.D. PIPELINE MODIFICATION VICINITY MAP			
				DRAFT. CHK BY: P.J.T.		10-31-05					
				DES. ENGR.		-		LOC. FEDERAL WATERS, OFFSHORE LOUISIANA			
				SUPV. ENGR.		-		YEAR: 2005		DWG. PER-01	
								W.O.		REV. B	
ISSUED FOR PERMIT		11-18-05									
PRELIMINARY, FOR CLIENT REVIEW		11-17-05									
NO. REVISION DESCRIPTION		DATE		DATE		YEAR: 2005		W.O.		DWG. PER-01	



ELEVATION

EXISTING 24" PIPELINE

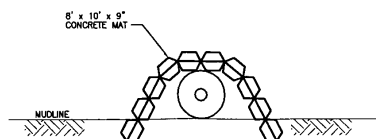
SCALE: 3/8" = 1'-0"



ELEVATION

24" AFTER MODIFICATION

SCALE: 3/8" = 1'-0"




SECTION

SCALE: 3/8" = 1'-0"

NOTES:

1. EDGES OF CONCRETE MAT TO BE BURIED.

		SCALE: AS NOTED				SOUTH MARSH ISLAND BLOCK 128 24" O.D., PIPELINE MODIFICATION DETAILS		 A Southern Union Company	
		DRAWN BY: G.J.D.		10-27-05					
		DRAFT. CHK BY: P.J.T.		10-31-05					
ISSUED FOR PERMIT		11-18-05		DES. ENGR.		LOC. FEDERAL WATERS, OFFSHORE LOUISIANA			
PRELIMINARY, FOR CLIENT REVIEW		11-17-05		SUPV. ENGR.					
NO.		REVISION DESCRIPTION		DATE		YEAR: 2005 W.O.		DWG. PER-02	
								REV. B	